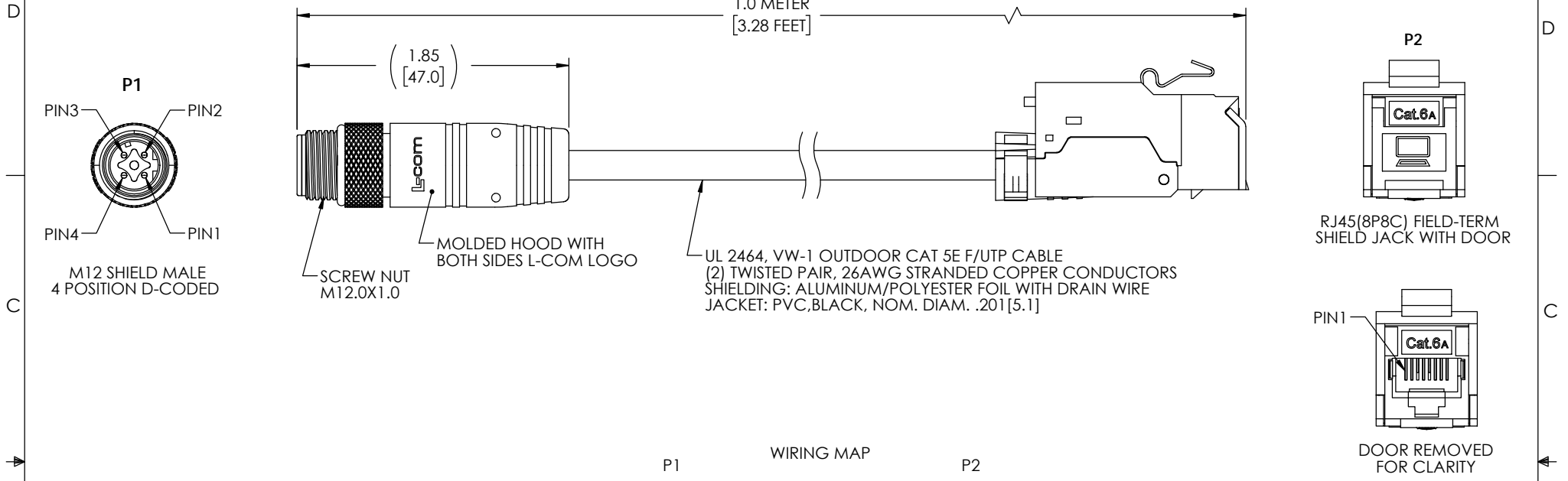


THE INFORMATION CONTAINED IN THIS DRAWING IS THE SOLE PROPERTY OF L-COM, INC. ANY REPRODUCTION IN PART OR WHOLE WITHOUT THE WRITTEN PERMISSION OF L-COM, INC. IS PROHIBITED.

REVISION					
ZONE	REV	DESCRIPTION	DATE	CHANGED BY	APPROVED
	A	INITIAL RELEASE	01/04/2024	BZHANG	GUTTADAURO



NOTES

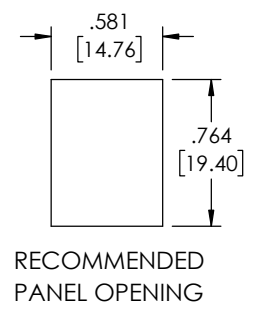
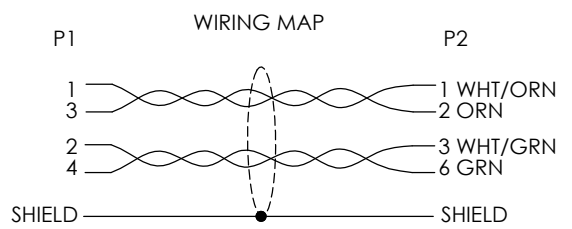
MATERIAL:
 MOLDED HOOD: PVC, BLACK, UV RESISTANCE
 M12 INSULATOR: NYLON, BLACK
 M12 SHELL/SCREW NUT: BRASS, NICKEL PLATE
 M12 CONTACTS: PHOSPHOR BRONZE, 15μ" MIN. GOLD PLATE
 RJ45 JACK HOUSING/CAP: ZINC ALLOY DIE-CAST
 RJ45 JACK INSULATOR: HIGH IMPACT FLAME RETARDANT PLASTIC
 RJ45 JACK SPRING SHIELDING: COPPER ALLOY, NICKEL PLATE
 RJ45 JACK CONTACTS: PHOSPHOR BRONZE, GOLD PLATE IN CONTACT AREA OVER NICKEL PLATE


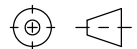
ELECTRICAL:
 VOLTAGE RATING: 125 VAC/VDC
 CURRENT RATING: 1.5A

APPLICATION:
 INGRESS PROTECTION RATING IS IP67 (MATED, P1 ONLY).

ENVIRONMENTAL:
 OPERATING TEMPERATURE RANGE: -20°C TO +68°C
 CABLE JACKET: UV RESISTANCE

MISCELLANEOUS
 CABLE ASSEMBLIES TO BE TESTED FOR CONTINUITY
 CABLE ASSEMBLY SHALL BE INDIVIDUALLY PACKAGED IN ACCORDANCE WITH L-COM SPECIFICATION PS-0031.



UNLESS OTHERWISE SPECIFIED, DIMENSIONS ARE IN INCHES [mm] OVERALL CABLE LENGTH TOLERANCE: ≤12 [305] = +1 [25] / -0 >12 [305] ≤60 [1524] = +2 [51] / -0 >60 [1524] ≤120 [3048] = +4 [102] / -0 >120 [3048] ≤300 [7620] = +6 [152] / -0 >300 [7620] = +5% / -0 ALL OTHER DIMENSIONAL TOLERANCES: .X = ± .2 [5] FRACTIONS ± 1/32 .XX = ± .02 [5] ANGLES ± 1° .XXX = ± .005 [13]	APPROVALS	DATE	 50 High Street, West Mill, North Andover, MA 01845 USA. Phone: 1.800.341.5266 1.978.682.6936
	DRAWN BY BZHANG	11/15/2023	
	CHECKED BY GUTTADAURO	11/15/2023	
	APPROVED BY GUTTADAURO	11/15/2023	
THIRD-ANGLE PROJECTION	CONFIGURATION DETAILS OF UNDIMENSIONED FEATURES MAY VARY	PRODUCT DESCRIPTION	TELECOM/MODULAR Cat5e M124D M/FRJ45 F/UTP 26AWG OD PVC BLK
	COLOR VARIATIONS MAY OCCUR	SIZE A	
		CAGE CODE 43321	
		DWG. NO. TRG525-C6B-1M	REV. A
		SCALE: NONE	SHEET 1 OF 1