

6

5

4

3

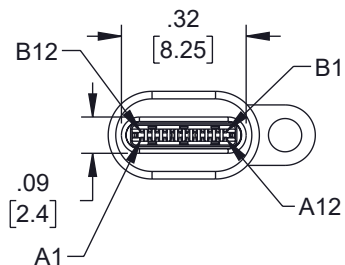
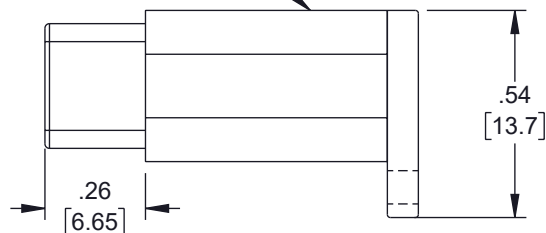
2

1

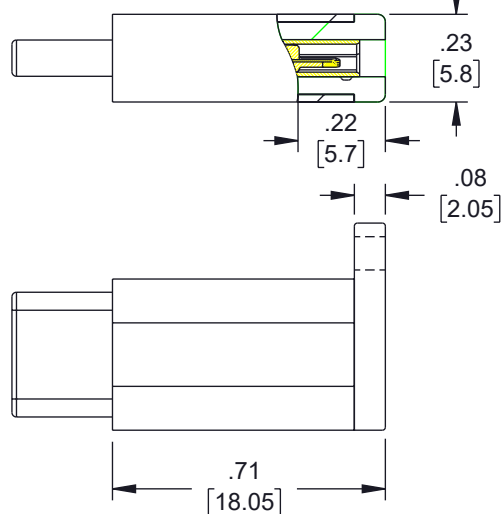
## REVISION

ZONE	REV	DESCRIPTION	DATE	CHANGED BY	APPROVED
	A	INITIAL RELEASE	02/06/2024	DMAY	DGUTTADAURO

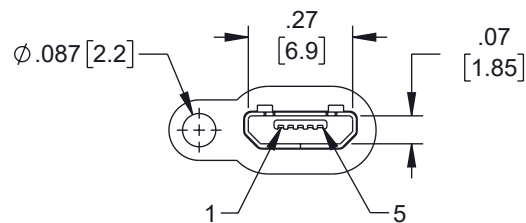
BLACK ALUMINUM ALLOY HOUSING



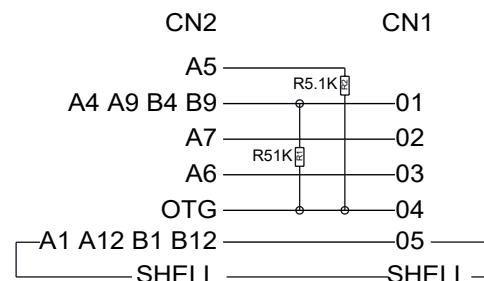
**CN1**  
USB TYPE C MALE  
CONNECTOR  
W/ NICKEL PLATED CONTACTS



**CN2**  
USB MICRO B FEMALE  
CONNECTOR  
W/ NICKEL PLATED CONTACTS



## PIN ASSIGNMENT



## NOTES:

- ELECTRICAL TEST:
  - 100% OPEN SHORT & MISS WIRE TEST
  - CONTACT RESISTANCE: 5 OHM MAX
  - INSULATION RESISTANCE: 10M OHM MIN
  - HI-POT TEST: DC 300V/10ms
- COMPONENT SHALL BE TESTED FOR CONTINUITY.
- COMPONENT SHALL BE INDIVIDUALLY PACKAGED.

## REGULATORY COMPLIANCE:

EU RoHS DIRECTIVE (MOST RECENT RELEASED VERSION)

THE INFORMATION CONTAINED IN THIS DRAWING IS THE SOLE PROPERTY OF INFINITE ELECTRONICS, INC. ANY REPRODUCTION IN PART OR WHOLE WITHOUT THE WRITTEN PERMISSION OF INFINITE ELECTRONICS, INC. IS PROHIBITED. THESE COMMODITIES, TECHNOLOGY OR SOFTWARE WERE EXPORTED FROM THE UNITED STATES IN ACCORDANCE WITH THE EXPORT ADMINISTRATION REGULATIONS. DIVERSION CONTRARY TO U.S. LAW PROHIBITED.

UNLESS OTHERWISE SPECIFIED  
LEADING DIMENSIONS ARE INCHES  
DIMENSIONS IN [ ] ARE MILLIMETERS

TOLERANCES:  
 X =  $\pm 0.02$  [5]  
 XX =  $\pm 0.02$  [0.5]  
 XXX =  $\pm 0.005$  [0.13]  
 FRACTIONS  
 $\pm 1/32$   
 ANGLES  $\pm 1^\circ$

CABLE LENGTH TOLERANCES:  
 $\leq 12$  [305] =  $\pm 1$  [25] / -0  
 $>12$  [305]  $\leq 60$  [1524] =  $\pm 2$  [51] / -0  
 $>60$  [1524]  $\leq 120$  [3048] =  $\pm 4$  [102] / -0  
 $>120$  [3048]  $\leq 300$  [7620] =  $\pm 6$  [152] / -0  
 $>300$  [7620] =  $\pm 5\%$  / -0

ALL DIMENSIONS ARE FOR REFERENCE ONLY  
AND SUBJECT TO CHANGE WITHOUT NOTICE.  
UN-DIMENSIONED/NON-CRITICAL FEATURES  
MAY VARY IN SIZE AND LOCATION  
COLORS MAY VARY

**Show Me™**  
**CABLES**  
an INFINIT® brand

Website: [www.ShowMeCables.com](http://www.ShowMeCables.com)  
Phone: 1.888.519.9505



INTERPRET ALL DIMENSIONS AND  
TOLERANCES PER ASME Y14.5

SCALE	SHEET
NONE	1 OF 1

## DESCRIPTION

USB MICRO B FEMALE TO C MALE, 480 Mbps

SIZE	CAGE CODE	DRAWN BY	ITEM NO.	REV
A	3SVT8	DMAY	SUSB2-MICROBF-CM	A

6

5

4

3

2

1