

## 2450 MHz, Gooseneck Antenna, SMA Male Connector



### SMANOM1149

#### Features

- 2450 MHz Operating Frequency
- Flexible Gooseneck
- SMA Male Connector
- 1.5:1 VSWR
- 10 Watt Max Input Power
- Typical 3 dBi Gain

#### Applications

- Unmanned Vehicles
- Manpack Radio Systems
- Secure Communications
- Surveillance Systems
- Mobile Systems

#### Description

The SMANOM1149 from ShowMeCables is an omnidirectional gooseneck antenna that features a flexible gooseneck mounting base. This flexible antenna can be bent and repositioned at any angle, allowing users to optimize signal reception and transmission in any environment. Our single-band gooseneck antenna with vertical polarization can operate at a minimum frequency of 2400 MHz, a center frequency of 2450 MHz, and a maximum frequency of 2500 MHz.

ShowMeCables's SMANOM1149 gooseneck antenna has an impedance of 50 Ohms and a maximum input power of 10 Watts. This omnidirectional antenna is designed to withstand temperatures ranging from -40 to 80 degrees C. Our vertical polarized antenna has an overall length of 12.4 inches, a width of 1.5 inches, and a weight of 0.33 lbs. This gooseneck antenna is lightweight and compact, making it easy to transport and deploy in the field.

This vertically polarized antenna has a maximum input VSWR of 1.5:1. Our single-band gooseneck antenna with an SMA male connector has a nominal gain of 3.5 dBi. This SMANOM1149 antenna comes with a black TPE radome that offers a protective covering without compromising the antenna system's performance.

#### Configuration

Design	Gooseneck
Band Type	Single
Radiation Pattern	Omni Directional
Polarization	Vertical
Connector Type	SMA Male

#### Electrical Specifications

Description	Minimum	Typical	Maximum	Units
Frequency Range	2,400		2,500	MHz
Input VSWR			1.5:1	
Impedance		50		Ohms
Gain		3.5		dBi
Input Power			10	Watts

#### Mechanical Specifications

Radome Material	TPE
<b>Size</b>	
Length	12.4 in [314.96 mm]
Width	1.5 in [38.1 mm]

### 2450 MHz, Gooseneck Antenna, SMA Male Connector



## SMANOM1149

---

Height	1.5 in [38.1 mm]
Weight	0.331 lbs [150.14 g]

### Environmental Specifications

<b>Temperature</b> Operating Range	-40 to +80 deg C
---------------------------------------	------------------

**Compliance Certifications** (see [product page](#) for current document)

### Plotted and Other Data

Notes:

### Typical Radiation Pattern

### Appendix

**Electrical Downtilt:** Angle in the antenna's elevation pattern in which the maximum gain occurs.

**Gain:** Antenna's average gain.

**Front to Back Ratio @ 180°±30°:** Average difference between the antenna's maximum gain and the maximum gain in the antenna's back lobe over ±30° angles.

**Cross-polarization Ratio (dB):** Typical difference between the co-polarization and cross-polarization gain across the sector's 3 dB Beam Width.

Dedicated to serving the needs of the Wireless Internet Service Provider (WISP) market, KP Performance Antennas offers purpose built products that reliably perform in the field. KP Performance Antennas product line consists of Yagi, Grid, Omni, Dish and other style antennas that operate in the 900 MHz, 2.4 GHz, 3 GHz, and 5 GHz frequencies.

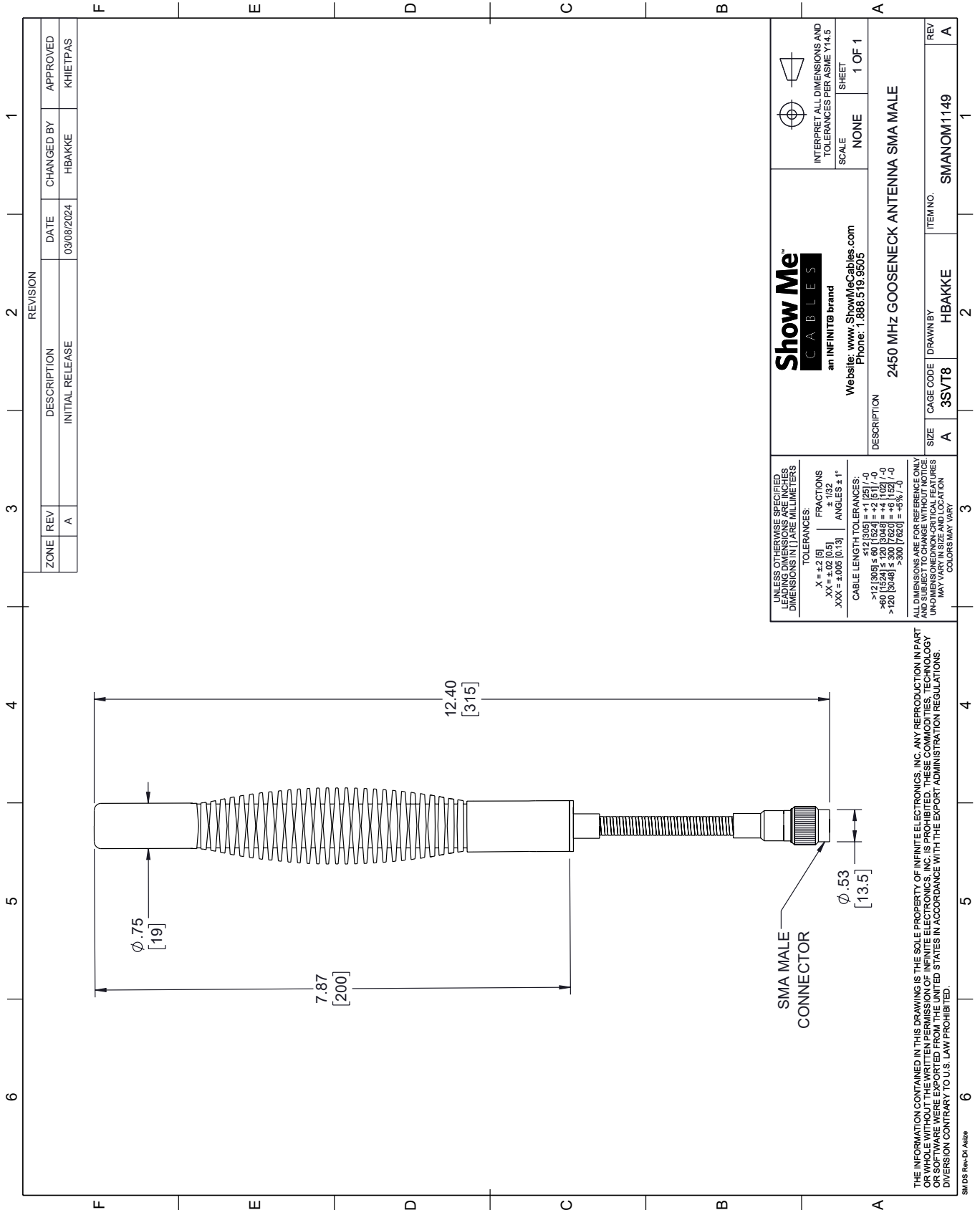
**FPO** Show Me Cables specializes in protection of highly sensitive, low voltage equipment through its patented, non-degrading silicon diode technology and custom filters. Our power quality expertise translates into a diverse product offering including AC, DC, and signal applications as well as integrated cabinets, power distribution panels and EMP hardened devices.

**FPO** Click the following link (or enter part number in "SEARCH" on website) to obtain additional part information including price, inventory and certifications: [2450 MHz, Gooseneck Antenna, SMA Male Connector SMANOM1149](#)

**FPO** The information contained within this document is accurate to the best of our knowledge and representative of the part described herein. It may be necessary to make modifications to the part and/or the documentation of the part in order to implement improvements. Show Me Cables reserves the right to make such changes as required. Unless otherwise stated, all specifications are nominal. Show Me Cables does not make any representation or warranty regarding the suitability of the part described herein for any particular purpose, and Show Me Cables does not assume liability arising out of the use of any part or document.

# SMANOM1149 CAD Drawing

## 2450 MHz, Gooseneck Antenna, SMA Male Connector



ZONE		REV	DESCRIPTION	DATE	CHANGED BY	APPROVED
A			INITIAL RELEASE	03/08/2024	HBAKKE	KHIETPAS

REVISION	
1	

**Show Me CABLES**  
an INFINITE brand

Website: [www.ShowMeCables.com](http://www.ShowMeCables.com)  
Phone: 1.888.519.9505

SCALE: NONE  
SHEET: 1 OF 1

INTERPRET ALL DIMENSIONS AND TOLERANCES PER ASME Y14.5

DESCRIPTION: 2450 MHz GOOSENECK ANTENNA SMA MALE

ITEM NO. SMANOM1149

SIZE A  
CAGE CODE 3SVT8  
DRAWN BY HBAKKE

UNLESS OTHERWISE SPECIFIED, DIMENSIONS ARE IN INCHES UNLESS OTHERWISE NOTED. DIMENSIONS IN [ ] ARE MILLIMETERS.

TOLERANCES:  
 .X = ±.2 [5]      FRACTIONS ± 1/32  
 .XX = ±.02 [0.5]      ANGLES ± 1°  
 .XXX = ±.005 [0.13]

CABLE LENGTH TOLERANCES:  
 <12 [305] ±.60 [15.24] = ±.2 [5] / -0  
 >12 [305] ≤ 60 [1524] = ±.4 [10.2] / -0  
 >60 [1524] ≤ 120 [3048] = ±.4 [10.2] / -0  
 >120 [3048] ≤ 300 [7620] = ±.6 [15.24] / -0

ALL DIMENSIONS ARE FOR REFERENCE ONLY. UNLESS OTHERWISE SPECIFIED, DIMENSIONS ARE IN INCHES UNLESS OTHERWISE NOTED. DIMENSIONS IN [ ] ARE MILLIMETERS. COLORS MAY VARY.

THE INFORMATION CONTAINED IN THIS DRAWING IS THE SOLE PROPERTY OF INFINITE ELECTRONICS, INC. ANY REPRODUCTION IN PART OR WHOLE WITHOUT THE WRITTEN PERMISSION OF INFINITE ELECTRONICS, INC. IS PROHIBITED. THESE COMMODITIES, TECHNOLOGY OR SERVICES ARE EXPORTED FROM THE UNITED STATES IN ACCORDANCE WITH THE EXPORT ADMINISTRATION REGULATIONS. DIVERSION CONTRARY TO U.S. LAW PROHIBITED.

SMDS Rev-DI A1size