

Passive SM Dual Stage Isolator, Grade P, 1310nm, 1M 250um bare fiber



## PSMDI-P31-12N

### Features

- Single Mode
- Dual Stage, Grade P (Premium)
- 1M, without connectors
- Low Insertion Loss
- High Isolation

### Applications

- Optical Amplifier
- Communication Networks
- Fiber Sensors
- Coherent Dedection
- Research and Development
- Power Monitoring

### Description

The L-com PSMDI-P31-12N is a Single Mode Dual Stage Isolator offered in Grade P (Premium). The wavelength is 1310nm with a cabling of 250um bare fiber, without connectors. The L-com PSMDI-P31-12N features a packaging of 5.5X35mm and fiber length of 1M. The L-com PSMDI-P31-12N is one of thousands of fiber optic products in stock and ready to ship. Contact our knowledgeable technical support and sales staff with your questions on fiber optic connectivity or other L-com products.

### Configuration

Mode	Single Mode
Module Function	Isolator
Fiber Type	250um SM28E Fiber
Fiber Diameter	250um
Package	5.5x35mm
Stage	Dual Stage
Grade	Grade P

### Filter Specifications

Description	Minimum	Typical	Maximum	Units
Operating Bandwidth		20		nm
Insertion Loss		0.6	0.7	dB
Return Loss	55			dB
Isolation	45	55		dB
Optical Power			300	mW
Tensile Load			5	N

### Size

Length	2.16 in [54.86 mm]
Weight	0.25 lbs [113.4 g]

Click the following link (or enter part number in "SEARCH" on website) to obtain additional part information including price, inventory and certifications:  
[Passive SM Dual Stage Isolator, Grade P, 1310nm, 1M 250um bare fiber PSMDI-P31-12N](#)

Passive SM Dual Stage Isolator, Grade P, 1310nm, 1M 250um bare fiber



## PSMDI-P31-12N

---

### Environmental Specifications

#### Temperature

Operating Range

-5 to +70 deg C

Storage Range

-40 to +85 deg C

**Compliance Certifications** (see [product page](#) for current document)

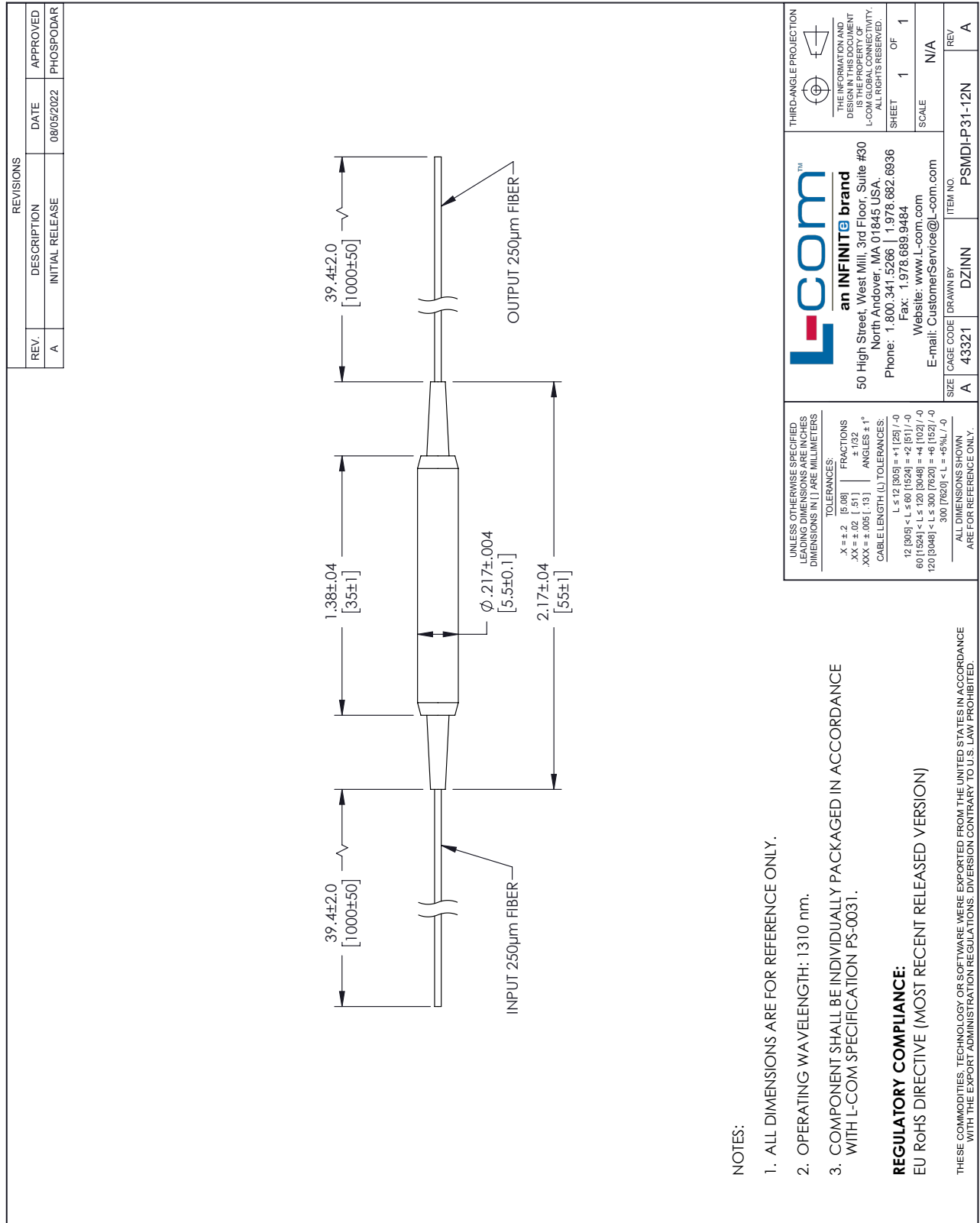
### Plotted and Other Data

Notes:

Passive SM Dual Stage Isolator, Grade P, 1310nm, 1M 250um bare fiber from L-com has same day shipment for domestic and International orders. Our portfolio includes coaxial cable assemblies, connectors, adapters and custom products as well as lightning and surge protectors, NEMA rated enclosures, and an RF product line which includes antennas, amplifiers, passive, and active components.

The information contained within this document is accurate to the best of our knowledge and representative of the part described herein. It may be necessary to make modifications to the part and/or the documentation of the part in order to impliment improvements. L-com reserves the right to make such changes as required. Unless otherwise stated, all specifications are nominal. L-com does not make any representation or warranty regarding the suitability of the part described herein for any particular purpose, and L-com does not assume liability arising out of the use of any part or document.

PSMDI-P31-12N CAD Drawing



NOTES:

1. ALL DIMENSIONS ARE FOR REFERENCE ONLY.
2. OPERATING WAVELENGTH: 1310 nm.
3. COMPONENT SHALL BE INDIVIDUALLY PACKAGED IN ACCORDANCE WITH L-COM SPECIFICATION PS-0031.

**REGULATORY COMPLIANCE:**  
EU ROHS DIRECTIVE (MOST RECENT RELEASED VERSION)

THESE COMMODITIES, TECHNOLOGY OR SOFTWARE WERE EXPORTED FROM THE UNITED STATES IN ACCORDANCE WITH THE EXPORT ADMINISTRATION REGULATIONS, DIVISION CONTRARY TO U.S. LAW PROHIBITED.

UNLESS OTHERWISE SPECIFIED LEADING DIMENSIONS ARE IN INCHES DIMENSIONS IN [ ] ARE MILLIMETERS

TOLERANCES:  
 .X ± .2 [5.08] FRACTIONS ± 1/32  
 .XX ± .02 [51] ANGLES ± 1°  
 .XXX ± .005 [13]

CABLE LENGTH (L) TOLERANCES:  
 L ≤ 12 [305] = +1 [25] / -0  
 12 [305] < L ≤ 60 [1524] = +4 [102] / -0  
 60 [1524] < L ≤ 120 [3048] = +4 [102] / -0  
 120 [3048] < L ≤ 300 [7620] = +6 [152] / -0  
 300 [7620] < L = +5%L / -0

ALL DIMENSIONS SHOWN ARE FOR REFERENCE ONLY.

**L-com**<sup>TM</sup>  
an INFINITE brand

50 High Street, West Mill, 3rd Floor, Suite #30  
North Andover, MA 01845, USA.  
Phone: 1.800.341.5266 | 1.978.682.6936  
Fax: 1.978.689.9484  
E-mail: CustomerService@l-com.com  
Website: www.l-com.com

DRAWN BY DZINN

CAGE CODE A 43321

ITEM NO. PSMDI-P31-12N

SCALE N/A

SHEET 1 OF 1

REV A