

Passive PLC, Plug-In Single LGX PLC Splitter,
1x08 Standard (Even) Split, SC-APC



PLC-108-1LG-SCA

Features

- Passive
- PLC
- Even split
- Standard LGX Cassette
- 1x8
- SC/APC connectors

Applications

- Single Mode Fiber Networking
- Single Fiber
- 1x8|| Even Split
- FTTx
- PON
- Metro transport
- Regional Distribution
- Inside Plant (ISP) Operation

Description

The PLC-108-1LG-SCA is 1x8 passive PLC splitter. The PLC-108-1LG-SCA is a single wide LGX filter. The PLC-108-1LG-SCA splits 1 input signal to 8 output signals and 8 input signals into 1 composite output signal bidirectionally. The PLC-108-1LG-SCA has SC/APC connectors. The PLC-108-1LG-SCA is a single fiber filter ideal for FTTx and PON applications. produces the high quality passive filters that your business can rely on. With products continually in stock and same-day shipping, our expert technical support and knowledgeable sales team can get you to the right parts for the job.

Configuration

Module Function PLC Splitter

Filter Specifications

Description	Minimum	Typical	Maximum	Units
Operating Wavelength	1260		1650	nm
Pass Band Insertion Loss			10.7	dB
Return Loss	55			dB
Directivity			55	dB
PDL			0.3	dB

Size

Length 6.14 in [155.96 mm]

Environmental Specifications

Temperature

Operating Range -20 to +65 deg C
Storage Range -40 to +85 deg C

Humidity 5-95%RH

Compliance Certifications (see [product page](#) for current document)

Plotted and Other Data

Notes:

Click the following link (or enter part number in "SEARCH" on website) to obtain additional part information including price, inventory and certifications:
[Passive PLC, Plug-In Single LGX PLC Splitter, 1x08 Standard \(Even\) Split, SC-APC](#)

Passive PLC, Plug-In Single LGX PLC Splitter,
1x08 Standard (Even) Split, SC-APC

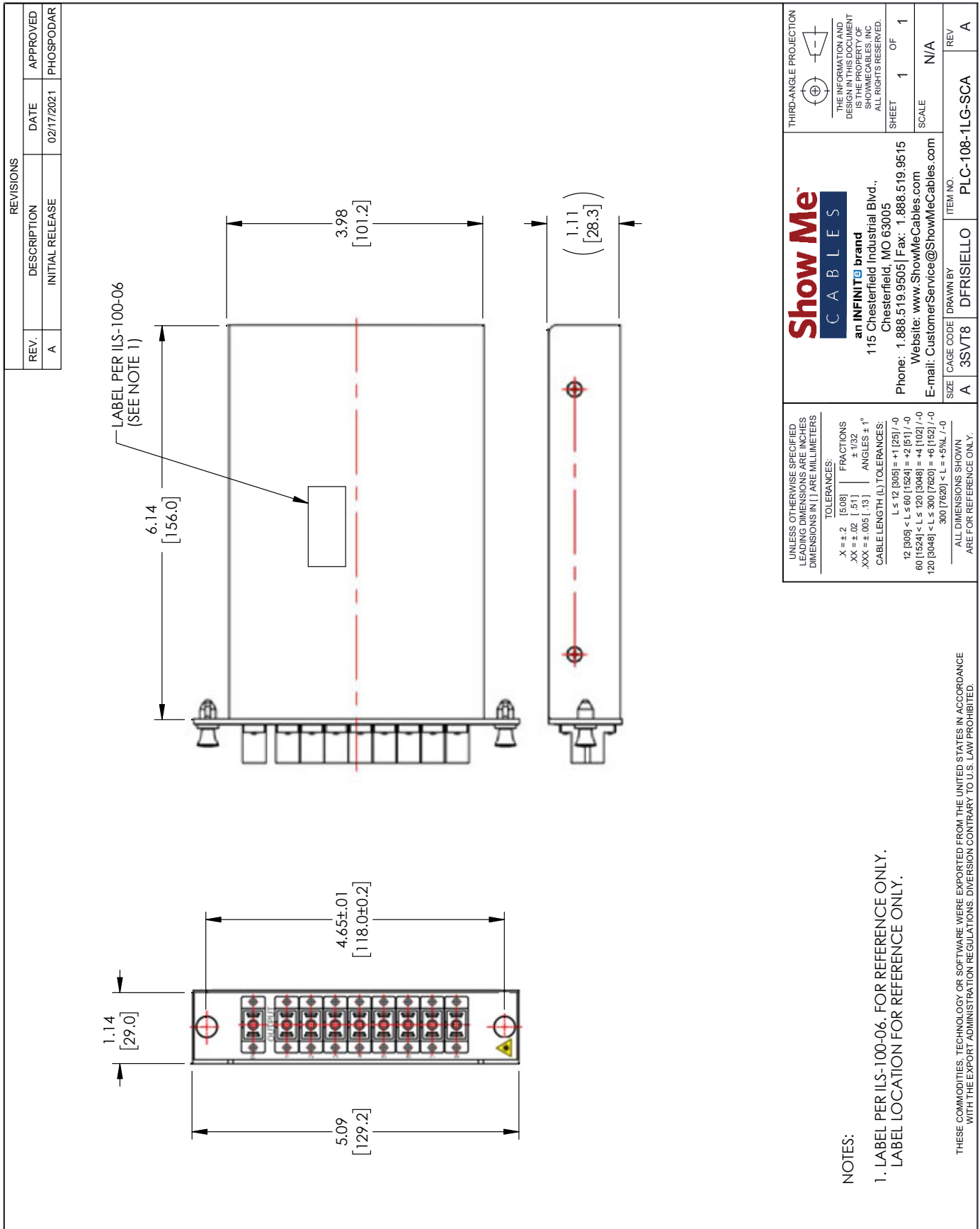


Passive PLC, Plug-In Single LGX PLC Splitter, 1x08 Standard (Even) Split, SC-APC from Show Me Cables has same day shipment for domestic and International orders. Click the following link (or enter part number in "SEARCH" on website) to obtain additional part information including price, inventory and certifications.

URL: <https://www.showmecables.com/passive-plc-plug-in-single-lgx-plc-splitter-1x08-standard-even-split-sc-apc-pps1p-08bss-nn5n-p.aspx>

The information contained within this document is accurate to the best of our knowledge and representative of the part described herein. It may be necessary to make modifications to the part and/or the documentation of the part in order to implement improvements. Show Me Cables reserves the right to make such changes as required. Unless otherwise stated, all specifications are nominal. Show Me Cables does not make any representation or warranty regarding the suitability of the part described herein for any particular purpose, and Show Me Cables does not assume liability arising out of the use of any part or document.

PLC-108-1LG-SCA CAD Drawing



NOTES:

1. LABEL PER ILS-100-06, FOR REFERENCE ONLY. LABEL LOCATION FOR REFERENCE ONLY.

THESE COMMODITIES, TECHNOLOGY OR SOFTWARE WERE EXPORTED FROM THE UNITED STATES IN ACCORDANCE WITH THE EXPORT ADMINISTRATION REGULATIONS. DIVERSION CONTRARY TO U.S. LAW PROHIBITED.

T-Rev D

REVISIONS		DATE	APPROVED
REV.	DESCRIPTION		
A	INITIAL RELEASE	02/17/2021	PHOSPODAR

<p>Show Me CABLES</p> <p>an INFINITI brand</p> <p>115 Chesterfield Industrial Blvd., Chesterfield, MO 63005</p> <p>Phone: 1.888.519.9505 Fax: 1.888.519.9515</p> <p>Website: www.ShowMeCables.com</p> <p>E-mail: CustomerService@ShowMeCables.com</p>	<p>THIRD-ANGLE PROJECTION</p> <p>THE INFORMATION AND DESIGN IN THIS DOCUMENT IS THE PROPERTY OF SHOWME CABLES, INC. ALL RIGHTS RESERVED.</p> <p>SHEET 1 OF 1</p>
	<p>SCALE N/A</p> <p>REV A</p>
<p>UNLESS OTHERWISE SPECIFIED, LEADING DIMENSIONS ARE INCHES DIMENSIONS IN [] ARE MILLIMETERS</p> <p>TOLERANCES:</p> <p>X ± .2 [5.08] FRACTIONS .XX ± .02 [.51] ± .132 .XXX ± .005 [.13] ANGLES ± 1°</p> <p>CABLE LENGTH (L) TOLERANCES:</p> <p>L ≤ 12 [305] = +1.25 / -0 12 [305] < L ≤ 60 [1524] = +2.65 / -0 60 [1524] < L ≤ 120 [3048] = +4.10 / -0 120 [3048] < L ≤ 300 [7620] = +6.10 / -0 300 [7620] < L = +5.94 / -0</p> <p>ALL DIMENSIONS SHOWN ARE FOR REFERENCE ONLY.</p>	<p>ITEM NO. PLC-108-1LG-SCA</p> <p>DRAWN BY DFRISIELLO</p> <p>CAGE CODE 3SVT8</p> <p>SIZE A</p>