

Passive DWDM, Cassette Demux, 4 channel, Starting at channel 52, 100GHz spacing, 900um 1m fiber, no connectors w/ Pass & upgrade port



PDWMD-04152-19NF

Features

- Passive
- DWDM
- Cassette Demux
- 4 channel
- Starting at channel 52
- 100GHz spacing
- 900um fiber 1m long with no connector
- Pass & Upgrade Port

Applications

- Single Mode Fiber Networking
- Single Fiber
- Mux function
- Metro transport
- Regional Distribution
- Outside Plant (OSP) Operation

Description

L-com's PDWMD-04152-19NF is a DWDM passive filter with 4 channels. L-com's PDWMD-04152-19NF is a cassette demultiplexer module starting at channel 52. L-com's PDWMD-04152-19NF has 20nm spacing with 900um fiber lead which is 1m long and has no connector. L-com's PDWMD-04152-19NF has a pass and upgrade port, the pass port is designed to add non-DWDM wavelengths to the existing network. The upgrade port is designed for adding remaining DWDM channels in the 1530-1565nm range (C-band). These ports are used by connecting the common (or line) port from another multiplexer utilizing different wavelengths. The addition of these channels allows for network expansion without interruption of existing connectivity, or additional fiber usage. L-com's PDWMD-04152-19NF is one of thousands of fiber optic products available in-stock and ready to ship today.

Configuration

Filter Type	DWDM
Module Type	Cassette
Module Function	Mux/Demux
Number of Channels	4
Optional Ports	Pass & Upgrade Port

Filter Specifications

Description	Minimum	Typical	Maximum	Units
Operating Wavelength	1260		1520	nm
Pass Port Wavelength	1530		1565	nm
Pass Port Isolation	12			dB
Pass Band	-0.11		0.11	nm
Pass Band Ripple			0.5	dB
Channel Spacing (GHz)		100		GHz
Channel Insertion Loss			1	dB
Return Loss	45			dB
Directivity			45	dB
PDL			0.25	dB
PMD			0.15	PS
Adjacent Channel Isolation	30			dB

Click the following link (or enter part number in "SEARCH" on website) to obtain additional part information including price, inventory and certifications:
[Passive DWDM, Cassette Demux, 4 channel, Starting at channel 52, 100GHz spacing, 900um 1m fiber, no connectors w/ Pass & upgrade port PDWMD-](#)

Passive DWDM, Cassette Demux, 4 channel, Starting at channel 52, 100GHz spacing, 900um 1m fiber, no connectors w/ Pass & upgrade port



PDWMD-04152-19NF

Non-Adjacent Channel Isolation	45		dB
IL Thermal Stability		0.005	dB/degC
Wavelength Thermal Stability		0.001	nm/degC

Size

Length	3.94 in [100.08 mm]
Weight	0.29 lbs [131.54 g]

Environmental Specifications

Temperature

Operating Range	-5 to +70 deg C
Storage Range	-40 to +85 deg C
Humidity	5-95%

Compliance Certifications (see [product page](#) for current document)

Plotted and Other Data

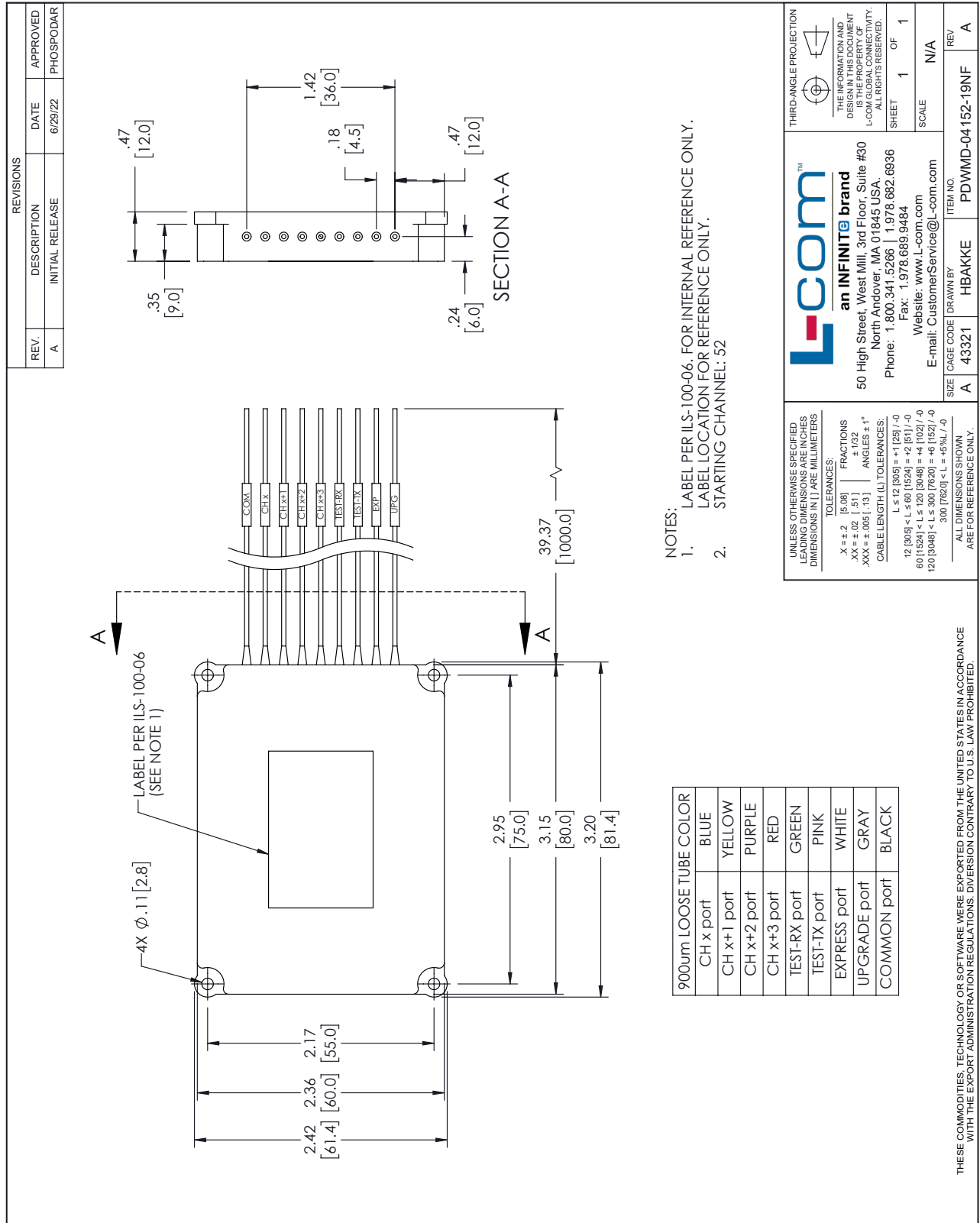
Notes:

Passive DWDM, Cassette Demux, 4 channel, Starting at channel 52, 100GHz spacing, 900um 1m fiber, no connectors w/ Pass & upgrade port from L-com has same day shipment for domestic and International orders. Our portfolio includes coaxial cable assemblies, connectors, adapters and custom products as well as lightning and surge protectors, NEMA rated enclosures, and an RF product line which includes antennas, amplifiers, passive, and active components.

The information contained within this document is accurate to the best of our knowledge and representative of the part described herein. It may be necessary to make modifications to the part and/or the documentation of the part in order to impliment improvements. L-com reserves the right to make such changes as required. Unless otherwise stated, all specifications are nominal. L-com does not make any representation or warranty regarding the suitability of the part described herein for any particular purpose, and L-com does not assume liability arising out of the use of any part or document.

Passive DWDM, Cassette Demux, 4 channel, Starting at channel 52, 100GHz spacing, 900um 1m fiber, no connectors w/ Pass & upgrade port

L-com CAD Drawing



T-Rev-D