

Passive DWDM, Cassette Demux, 4 channel, Starting at channel 32, 100GHz spacing, 900um 1m fiber, LC-UPC w/ Pass & upgrade port



## PDWMD-04132-194F

### Features

- Passive
- DWDM
- Cassette Demux
- 4 channel
- Starting at channel 32
- 100GHz spacing
- 900um fiber 1m long with LC-UPC
- Pass & Upgrade Port

### Applications

- Single Mode Fiber Networking
- Single Fiber
- Mux function
- Metro transport
- Regional Distribution
- Outside Plant (OSP) Operation

### Description

L-com's PDWMD-04132-194F is a DWDM passive filter with 4 channels. L-com's PDWMD-04132-194F is a cassette demultiplexer module starting at channel 32. L-com's PDWMD-04132-194F has 20nm spacing with 900um fiber lead which is 1m long and has LC/UPC connector. L-com's PDWMD-04132-194F has a pass and upgrade port, the pass port is designed to add non-DWDM wavelengths to the existing network. The upgrade port is designed for adding remaining DWDM channels in the 1530-1565nm range (C-band). These ports are used by connecting the common (or line) port from another multiplexer utilizing different wavelengths. The addition of these channels allows for network expansion without interruption of existing connectivity, or additional fiber usage. L-com's PDWMD-04132-194F is one of thousands of fiber optic products available in-stock and ready to ship today.

### Configuration

|                    |                     |
|--------------------|---------------------|
| Filter Type        | DWDM                |
| Module Type        | Cassette            |
| Module Function    | Mux/Demux           |
| Number of Channels | 4                   |
| Optional Ports     | Pass & Upgrade Port |
| Connector Type     | LC                  |
| Polish             | UPC                 |

### Filter Specifications

| Description            | Minimum | Typical | Maximum | Units |
|------------------------|---------|---------|---------|-------|
| Operating Wavelength   | 1260    |         | 1520    | nm    |
| Pass Port Wavelength   | 1530    |         | 1565    | nm    |
| Pass Port Isolation    | 12      |         |         | dB    |
| Pass Band              | -0.11   |         | 0.11    | nm    |
| Pass Band Ripple       |         |         | 0.5     | dB    |
| Channel Spacing (GHz)  |         | 100     |         | GHz   |
| Channel Insertion Loss |         |         | 1       | dB    |
| Return Loss            | 45      |         |         | dB    |
| Directivity            |         |         | 45      | dB    |
| PDL                    |         |         | 0.25    | dB    |

Click the following link (or enter part number in "SEARCH" on website) to obtain additional part information including price, inventory and certifications: [Passive DWDM, Cassette Demux, 4 channel, Starting at channel 32, 100GHz spacing, 900um 1m fiber, LC-UPC w/ Pass & upgrade port PDWMD-](#)

Passive DWDM, Cassette Demux, 4 channel, Starting at channel 32, 100GHz spacing, 900um 1m fiber, LC-UPC w/ Pass & upgrade port



## PDWMD-04132-194F

|                                |    |       |         |
|--------------------------------|----|-------|---------|
| PMD                            |    | 0.15  | PS      |
| Adjacent Channel Isolation     | 30 |       | dB      |
| Non-Adjacent Channel Isolation | 45 |       | dB      |
| IL Thermal Stability           |    | 0.005 | dB/degC |
| Wavelength Thermal Stability   |    | 0.001 | nm/degC |

### Size

|        |                     |
|--------|---------------------|
| Length | 3.15 in [80.01 mm]  |
| Weight | 0.33 lbs [149.69 g] |

### Environmental Specifications

#### Temperature

|                 |                  |
|-----------------|------------------|
| Operating Range | -5 to +70 deg C  |
| Storage Range   | -40 to +85 deg C |
| Humidity        | 5-95%            |

**Compliance Certifications** (see [product page](#) for current document)

### Plotted and Other Data

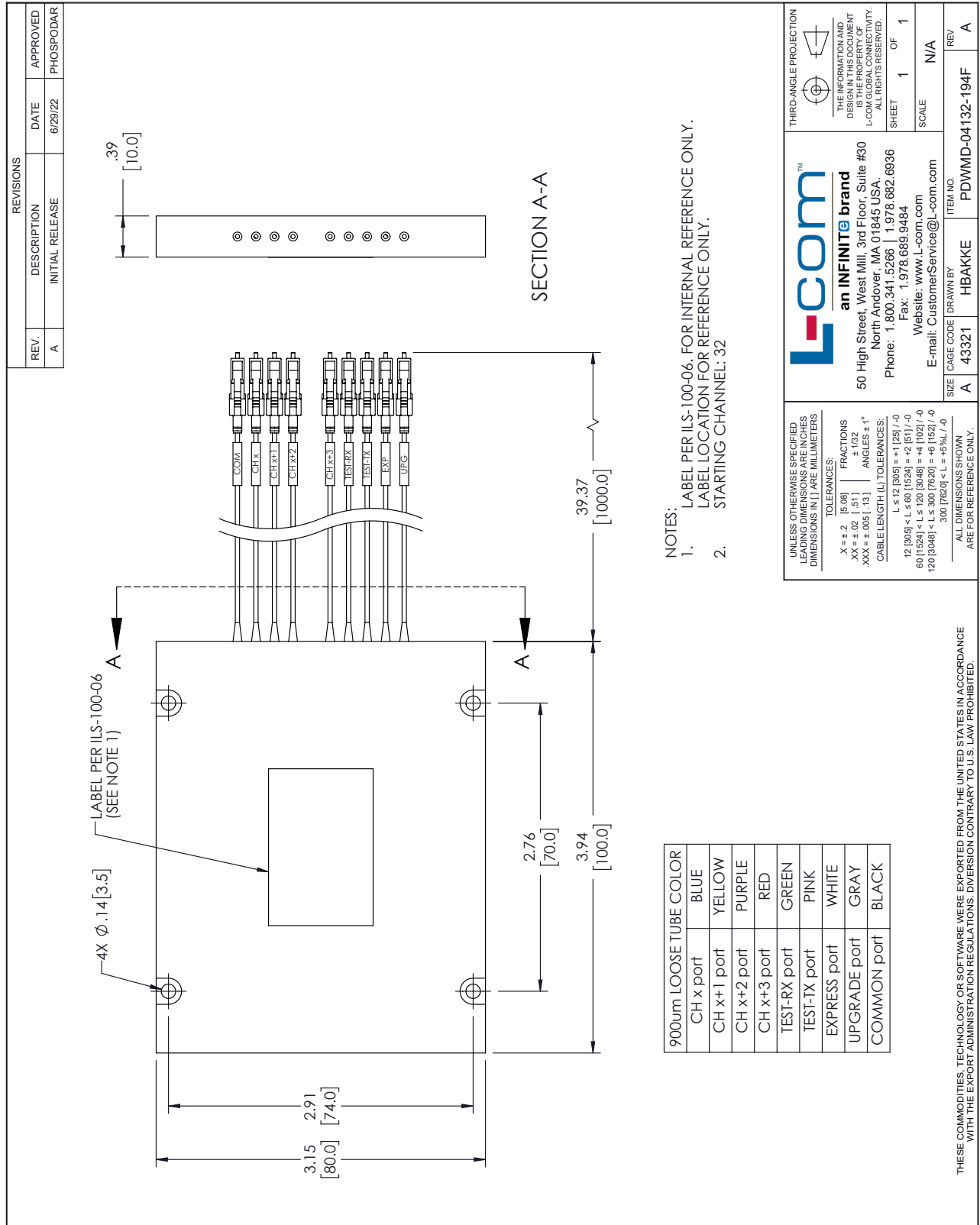
Notes:

Passive DWDM, Cassette Demux, 4 channel, Starting at channel 32, 100GHz spacing, 900um 1m fiber, LC-UPC w/ Pass & upgrade port from L-com has same day shipment for domestic and International orders. Our portfolio includes coaxial cable assemblies, connectors, adapters and custom products as well as lightning and surge protectors, NEMA rated enclosures, and an RF product line which includes antennas, amplifiers, passive, and active components.

The information contained within this document is accurate to the best of our knowledge and representative of the part described herein. It may be necessary to make modifications to the part and/or the documentation of the part in order to implement improvements. L-com reserves the right to make such changes as required. Unless otherwise stated, all specifications are nominal. L-com does not make any representation or warranty regarding the suitability of the part described herein for any particular purpose, and L-com does not assume liability arising out of the use of any part or document.

Passive DWDM, Cassette Demux, 4 channel, Starting at channel 32, 100GHz spacing, 900um 1m fiber, LC-UPC w/ Pass & upgrade port

L-com CAD Drawing



| REVISIONS |                 |           |
|-----------|-----------------|-----------|
| REV.      | DESCRIPTION     | DATE      |
| A         | INITIAL RELEASE | 6/29/22   |
|           |                 | PHOSPODAR |

- NOTES:
1. LABEL PER ILS-100-06. FOR INTERNAL REFERENCE ONLY.
  2. LABEL LOCATION FOR REFERENCE ONLY.

| 900um LOOSE TUBE COLOR |        |
|------------------------|--------|
| CH x port              | BLUE   |
| CH x+1 port            | YELLOW |
| CH x+2 port            | PURPLE |
| CH x+3 port            | RED    |
| TEST-RX port           | GREEN  |
| TEST-TX port           | PINK   |
| EXPRESS port           | WHITE  |
| UPGRADE port           | GRAY   |
| COMMON port            | BLACK  |

UNLESS OTHERWISE SPECIFIED LEADING DIMENSIONS ARE IN INCHES DIMENSIONS IN [ ] ARE MILLIMETERS

TOLERANCES:  
 .X = ±.2 [5.08] FRACTIONS ± 1/32  
 .XX = ±.02 [ .51] ANGLES ± 1°  
 .XXX = ±.005 [ .13]

CABLE LENGTH (L) TOLERANCES:  
 L ≤ 12 [305] < L ≤ 60 [1524] = ±1 [25] / -0  
 60 [1524] < L ≤ 120 [3048] = ±4 [102] / -0  
 120 [3048] < L ≤ 300 [7620] = ±6 [152] / -0  
 300 [7620] < L = +5%L / -0

ALL DIMENSIONS SHOWN ARE FOR REFERENCE ONLY.

THIRD-ANGLE PROJECTION

THE INFORMATION AND DIMENSIONS SHOWN HEREIN IS THE PROPERTY OF L-COM GLOBAL CONNECTIVITY. ALL RIGHTS RESERVED.

SHEET 1 OF 1

SCALE N/A

ITEM NO. PDWMD-04132-194F

REV A

SIZE A

CAGE CODE 43321

DRAWN BY HBAKKE

Website: www.L-com.com  
 E-mail: CustomerService@L-com.com

an INFINITE brand  
 50 High Street, West Mill, 3rd Floor, Suite #30  
 North Andover, MA 01845 USA.  
 Phone: 1.800.341.5266 | 1.978.682.6936  
 Fax: 1.978.689.9484

THESE COMMODITIES, TECHNOLOGY OR SOFTWARE WERE EXPORTED FROM THE UNITED STATES IN ACCORDANCE WITH THE EXPORT ADMINISTRATION REGULATIONS. DIVERSION CONTRARY TO U.S. LAW PROHIBITED.

T-Rev D