

Passive DWDM, Cassette Demux, 4 channel, Starting at channel 20, 100GHz spacing, 900um 1m fiber, SC-APC w/ Pass & upgrade port



PDWMD-04120-195F

Features

- Passive
- DWDM
- Cassette Demux
- 4 channel
- Starting at channel 20
- 100GHz spacing
- 900um fiber 1m long with SC-APC
- Pass & Upgrade Port

Applications

- Single Mode Fiber Networking
- Single Fiber
- Mux function
- Metro transport
- Regional Distribution
- Outside Plant (OSP) Operation

Description

L-com's PDWMD-04120-195F is a DWDM passive filter with 4 channels. L-com's PDWMD-04120-195F is a cassette demultiplexer module starting at channel 20. L-com's PDWMD-04120-195F has 20nm spacing with 900um fiber lead which is 1m long and has SC/APC connector. L-com's PDWMD-04120-195F has a pass and upgrade port, the pass port is designed to add non-DWDM wavelengths to the existing network. The upgrade port is designed for adding remaining DWDM channels in the 1530-1565nm range (C-band). These ports are used by connecting the common (or line) port from another multiplexer utilizing different wavelengths. The addition of these channels allows for network expansion without interruption of existing connectivity, or additional fiber usage. L-com's PDWMD-04120-195F is one of thousands of fiber optic products available in-stock and ready to ship today.

Configuration

Filter Type	DWDM
Module Type	Cassette
Module Function	Mux/Demux
Number of Channels	4
Optional Ports	Pass & Upgrade Port
Connector Type	SC
Polish	APC

Filter Specifications

Description	Minimum	Typical	Maximum	Units
Operating Wavelength	1260		1520	nm
Pass Port Wavelength	1530		1565	nm
Pass Port Isolation	12			dB
Pass Band	-0.11		0.11	nm
Pass Band Ripple			0.5	dB
Channel Spacing (GHz)		100		GHz
Channel Insertion Loss			1	dB
Return Loss	45			dB
Directivity			45	dB
PDL			0.25	dB

Click the following link (or enter part number in "SEARCH" on website) to obtain additional part information including price, inventory and certifications: [Passive DWDM, Cassette Demux, 4 channel, Starting at channel 20, 100GHz spacing, 900um 1m fiber, SC-APC w/ Pass & upgrade port PDWMD-](#)

Passive DWDM, Cassette Demux, 4 channel, Starting at channel 20, 100GHz spacing, 900um 1m fiber, SC-APC w/ Pass & upgrade port



PDWMD-04120-195F

PMD		0.15	PS
Adjacent Channel Isolation	30		dB
Non-Adjacent Channel Isolation	45		dB
IL Thermal Stability		0.005	dB/degC
Wavelength Thermal Stability		0.001	nm/degC

Size

Length	3.15 in [80.01 mm]
Weight	0.33 lbs [149.69 g]

Environmental Specifications

Temperature

Operating Range	-5 to +70 deg C
Storage Range	-40 to +85 deg C
Humidity	5-95%

Compliance Certifications (see [product page](#) for current document)

Plotted and Other Data

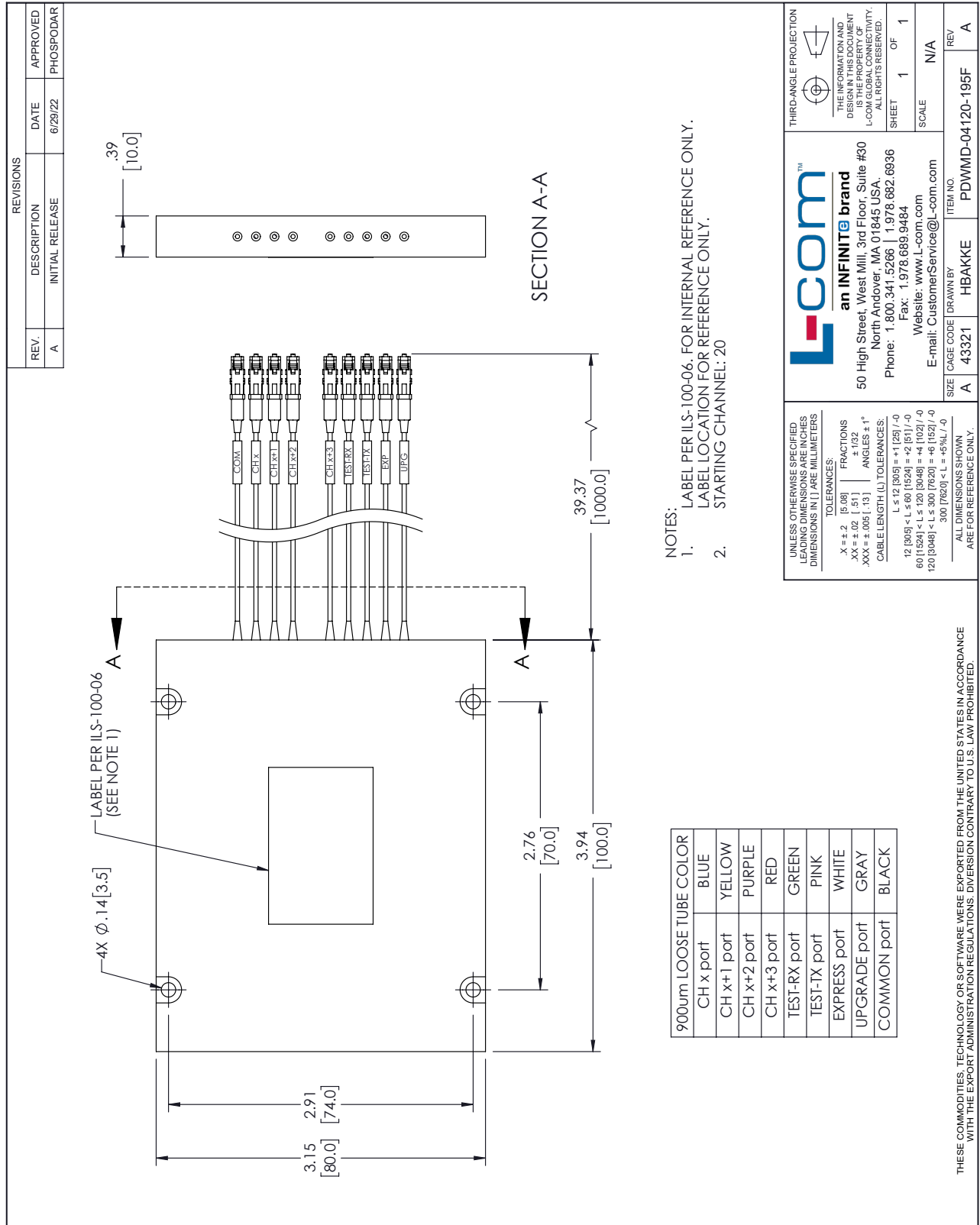
Notes:

Passive DWDM, Cassette Demux, 4 channel, Starting at channel 20, 100GHz spacing, 900um 1m fiber, SC-APC w/ Pass & upgrade port from L-com has same day shipment for domestic and International orders. Our portfolio includes coaxial cable assemblies, connectors, adapters and custom products as well as lightning and surge protectors, NEMA rated enclosures, and an RF product line which includes antennas, amplifiers, passive, and active components.

The information contained within this document is accurate to the best of our knowledge and representative of the part described herein. It may be necessary to make modifications to the part and/or the documentation of the part in order to impliment improvements. L-com reserves the right to make such changes as required. Unless otherwise stated, all specifications are nominal. L-com does not make any representation or warranty regarding the suitability of the part described herein for any particular purpose, and L-com does not assume liability arising out of the use of any part or document.

Passive DWDM, Cassette Demux, 4 channel, Starting at channel 20, 100GHz spacing, 900um 1m fiber, SC-APC w/ Pass & upgrade port

L-com CAD Drawing



REVISIONS		
REV.	DESCRIPTION	DATE
A	INITIAL RELEASE	6/29/22
		PHOSPODAR

- NOTES:
1. LABEL PER ILS-100-06 FOR INTERNAL REFERENCE ONLY.
 2. LABEL LOCATION FOR REFERENCE ONLY.
 3. STARTING CHANNEL: 20

900um LOOSE TUBE COLOR	
CH x port	BLUE
CH x+1 port	YELLOW
CH x+2 port	PURPLE
CH x+3 port	RED
TEST-RX port	GREEN
TEST-TX port	PINK
EXPRESS port	WHITE
UPGRADE port	GRAY
COMMON port	BLACK

UNLESS OTHERWISE SPECIFIED LEADING DIMENSIONS ARE IN INCHES DIMENSIONS IN [] ARE MILLIMETERS

TOLERANCES:
 .X = ±.2 [5.08] FRACTIONS ± 1/32
 .XX = ±.02 [.51] ANGLES ± 1°
 .XXX = ±.005 [.13]

CABLE LENGTH (L) TOLERANCES:
 L ≤ 12 [305] < L ≤ 60 [1524] = ±1 [25] / -0
 60 [1524] < L ≤ 120 [3048] = ±4 [102] / -0
 120 [3048] < L ≤ 300 [7620] = ±6 [152] / -0
 300 [7620] < L = +5% / -0

ALL DIMENSIONS SHOWN ARE FOR REFERENCE ONLY.

THIRD-ANGLE PROJECTION

THE INFORMATION AND DIMENSIONS SHOWN ARE THE PROPERTY OF L-COM GLOBAL CONNECTIVITY. ALL RIGHTS RESERVED.
 SHEET 1 OF 1
 SCALE N/A

L-com™
 an INFINITE brand
 50 High Street, West Mill, 3rd Floor, Suite #30
 North Andover, MA 01845 USA.
 Phone: 1.800.341.5266 | 1.978.682.6936
 Fax: 1.978.689.9484
 Website: www.L-com.com
 E-mail: CustomerService@L-com.com

ITEM NO. PDWMD-04120-195F
 DRAWN BY HBAKKE
 SIZE A
 CAGE CODE 43321

THESE COMMODITIES, TECHNOLOGY OR SOFTWARE WERE EXPORTED FROM THE UNITED STATES IN ACCORDANCE WITH THE EXPORT ADMINISTRATION REGULATIONS. DIVERSION CONTRARY TO U.S. LAW PROHIBITED.

T-Rev D