

Passive DWDM, Plug-In Single LGX Mux & Demux, 4 Channels with 100 GHz spacing, starting Ch48 (1538.98nm), LC-APC connectors, Pass & Monitor



## PDW1C-04148-NN36

### Features

- Passive
- DWDM
- 100 GHz spacing
- Plug-In Single LGX Combo Mux & Demux
- 4 channels
- Starting with channel 48 (1538.98nm)
- LC/APC, Pass & Monitor

### Applications

- Single Mode Fiber Networking
- Single Fiber
- Mux function
- Metro transport
- Regional Distribution
- Inside Plant (ISP) Operation

### Description

L-com's PDW1C-04148-NN36 is a DWDM passive filter with 4 channels and 100GHz spacing. L-com's PDW1C-04148-NN36 is a Plug-In Single LGX with Mux and Demux functionality. L-com's PDW1C-04148-NN36 has LC/APC connectors starting at channel 48 (1538.98nm) with Pass & Monitor. An upgrade port is similar to a pass port, with the key difference that it is designed for the addition of remaining DWDM channels in the 1530-1565nm range (C-band). It is used by connecting the common (or line) port from another multiplexer utilizing different wavelengths. The addition of these channels allows for network expansion without interruption of existing connectivity, or additional fiber usage. A monitor port used to analyze or test the power signal coming into or out of a multiplexer, either before it reaches the de-multiplexer (received signal) or as it exits the multiplexer (transmitted signal). L-com's PCW1D-8F327-NN36 is one of thousands of fiber optic products available in-stock and ready to ship today.

### Configuration

Filter Type	DWDM
Module Type	Single LGX
Module Function	Mux/DeMux
Number of Channels	4
Starting Channel	1538.98nm
Connector Type	LC
Polish	APC

### Filter Specifications

Description	Minimum	Typical	Maximum	Units
Operating Wavelength	1527.22		1564.68	nm
Pass Port Wavelength	1527.22		1564.68	nm
Pass Port Insertion Loss			2	dB
Pass Band	0.125			nm
Pass Band Ripple			0.5	dB
Channel Spacing (GHz)		100		GHz
Channel Insertion Loss			2.5	dB
Return Loss	45			dB
Directivity			50	dB

Click the following link (or enter part number in "SEARCH" on website) to obtain additional part information including price, inventory and certifications:  
[Passive DWDM, Plug-In Single LGX Mux & Demux, 4 Channels with 100 GHz spacing, starting Ch48 \(1538.98nm\), LC-APC connectors, Pass & Monitor](#)

Passive DWDM, Plug-In Single LGX Mux & Demux, 4 Channels with 100 GHz spacing, starting Ch48 (1538.98nm), LC-APC connectors, Pass & Monitor



## PDW1C-04148-NN36

PDL	0.25	dB
PMD	0.2	PS
Channel to Monitor Port IL	25	dB
COM to Monitor Port IL	23	dB
IL Thermal Stability	0.005	dB/degC
Wavelength Thermal Stability	0.002	nm/degC

### Size

Length	6.25 in [158.75 mm]
Weight	1 lbs [453.59 g]

### Environmental Specifications

#### Temperature

Operating Range	-5 to +65 deg C
Storage Range	-40 to +85 deg C
Humidity	5~95

**Compliance Certifications** (see [product page](#) for current document)

### Plotted and Other Data

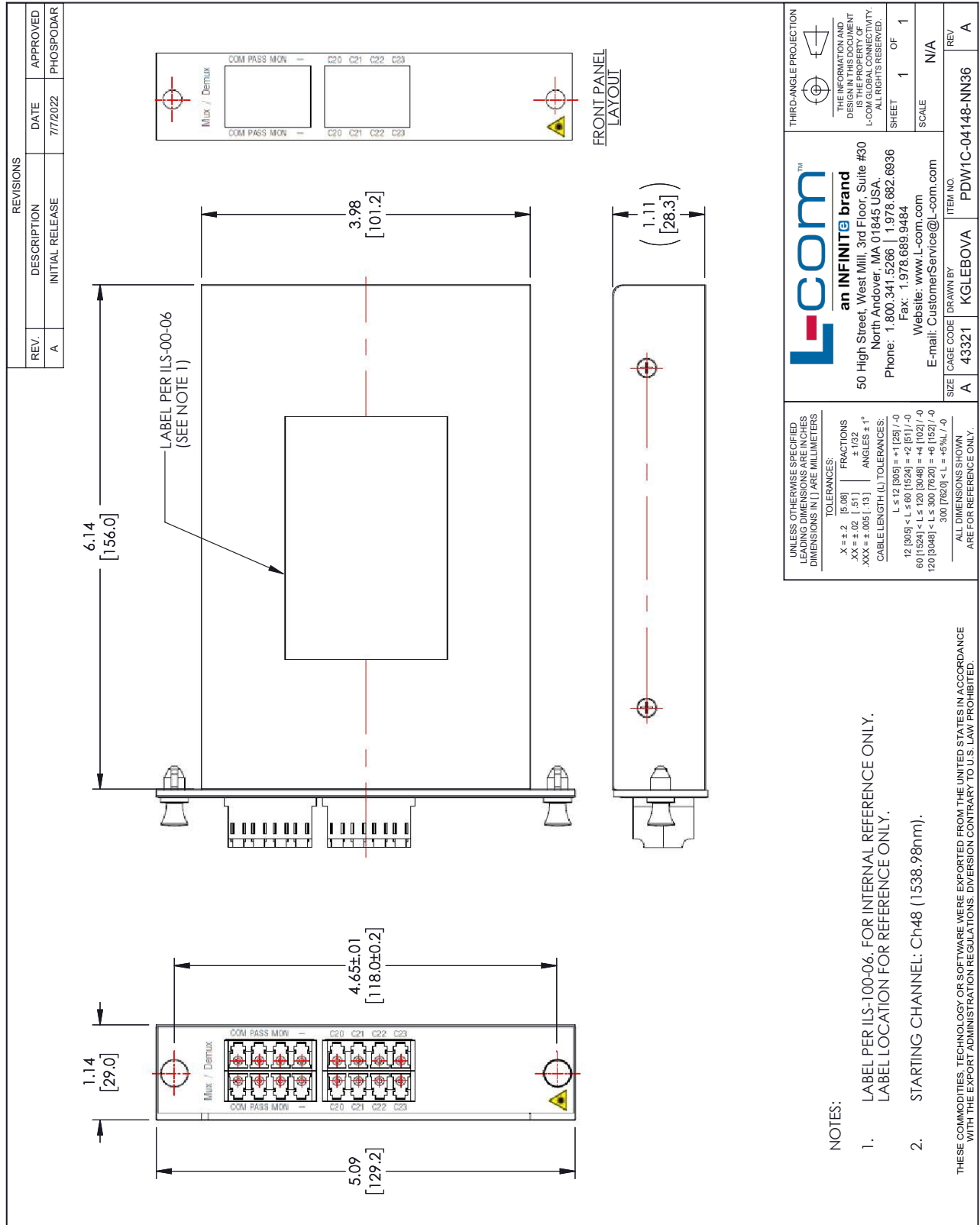
Notes:

Passive DWDM, Plug-In Single LGX Mux & Demux, 4 Channels with 100 GHz spacing, starting Ch48 (1538.98nm), LC-APC connectors, Pass & Monitor from L-com has same day shipment for domestic and International orders. Our portfolio includes coaxial cable assemblies, connectors, adapters and custom products as well as lightning and surge protectors, NEMA rated enclosures, and an RF product line which includes antennas, amplifiers, passive, and active components.

The information contained within this document is accurate to the best of our knowledge and representative of the part described herein. It may be necessary to make modifications to the part and/or the documentation of the part in order to impliment improvements. L-com reserves the right to make such changes as required. Unless otherwise stated, all specifications are nominal. L-com does not make any representation or warranty regarding the suitability of the part described herein for any particular purpose, and L-com does not assume liability arising out of the use of any part or document.

Passive DWDM, Plug-In Single LGX Mux & Demux, 4 Channels with 100 GHz spacing, starting Ch48 (1538.98nm), LC-APC connectors, Pass & Monitor

L-com CAD Drawing



REVISIONS		
REV.	DESCRIPTION	DATE
A	INITIAL RELEASE	7/7/2022
		APPROVED
		PHOSPODAR

UNLESS OTHERWISE SPECIFIED LEADING DIMENSIONS ARE IN INCHES DIMENSIONS IN [ ] ARE MILLIMETERS

TOLERANCES:  
 .X ± .2 [5.08]      FRACTIONS ± 1/32  
 .XX ± .02 [ .51]      ANGLES ± 1°  
 .XXX ± .005 [ .13]      CABLE LENGTH (L) TOLERANCES:  
 L ≤ 12 [305] = ± 1 [25] / -0  
 12 [305] < L ≤ 60 [1524] = ± 1 [25] / -0  
 60 [1524] < L ≤ 120 [3048] = ± 1 [25] / -0  
 120 [3048] < L ≤ 300 [7620] = ± 1 [25] / -0  
 300 [7620] < L = +5%L / -0

ALL DIMENSIONS SHOWN ARE FOR REFERENCE ONLY.

THIRD-ANGLE PROJECTION

THE INFORMATION AND DIMENSIONS SHOWN HEREIN IS THE PROPERTY OF L-COM GLOBAL CONNECTIVITY. ALL RIGHTS RESERVED.  
 SHEET 1 OF 1

SCALE N/A

ITEM NO. PDW1C-04148-NN36

REV A

an INFINITE brand  
 50 High Street, West Mill, 3rd Floor, Suite #30  
 North Andover, MA 01845 USA.  
 Phone: 1.800.341.5266 | 1.978.682.6936  
 Fax: 1.978.689.9484  
 Website: www.L-com.com  
 E-mail: CustomerService@L-com.com

SIZE A    CAGE CODE 43321    DRAWN BY KGLEBOVA    DRAWING NO. PDW1C-04148-NN36

- NOTES:
- LABEL PER ILS-100-06. FOR INTERNAL REFERENCE ONLY. LABEL LOCATION FOR REFERENCE ONLY.
  - STARTING CHANNEL: Ch48 (1538.98nm).

THESE COMMODITIES, TECHNOLOGY OR SOFTWARE WERE EXPORTED FROM THE UNITED STATES IN ACCORDANCE WITH THE EXPORT ADMINISTRATION REGULATIONS. DIVERSION CONTRARY TO U.S. LAW PROHIBITED.

T-Rev-D