

Passive CWDM, LGX Mux, 8 Channels F (skip 1391-1411nm) with 20 nm spacing, starting at Ch 1271nm, LC/APC with Monitor & Pass



## PCW1M-8F327-NN36

### Features

- Passive
- CWDM
- 20nm spacing
- LGX Mux
- 8 Channels (skipping 1391-1411nm)
- Starting with channel 1271nm
- LC/APC Monitor & Pass

### Applications

- Single Mode Fiber Networking
- Single Fiber
- Mux function
- Metro transport
- Regional Distribution
- Outside Plant (OSP) Operation

### Description

L-com's PCW1D-8F327-NN36 is a CWDM passive filter with 8 channels with 20nm spacing. L-com's PCW1D-8F327-NN36 is a LGX filter with Mux functionality. L-com's PCW1D-8F327-NN36 has 8 channels: 1271, 1291, 1311, 1331, 1351, 1371, 1431, 1451nm (skipping 1391 and 1411nm), starting with 1271nm and with 20nm spacing with LC/APC and monitor and pass. A monitor port used to analyze or test the power signal coming into or out of a multiplexer, either before it reaches the de-multiplexer (received signal) or as it exits the multiplexer (transmitted signal). The pass port is designed for adding more wavelengths to the existing network. It is used by connecting the common (or line) port from another multiplexer utilizing different wavelengths. The addition of these channels allows for network expansion without interruption of existing connectivity, or additional fiber usage. L-com's PCW1D-8F327-NN36 is one of thousands of fiber optic products available in-stock and ready to ship today.

### Configuration

Module Type	CWDM
Module Function	Mux
Number of Channels	8
Starting Channel	1271nmnm
Optional Ports	PASS Port, Monitor Port
Connector Type	LC/APC

### Filter Specifications

Description	Minimum	Typical	Maximum	Units
Operating Wavelength	1260		1635	nm
Pass Port Wavelength	1271		1611	nm
Pass Port Insertion Loss			2.8	dB
Pass Port Isolation	12			dB
Pass Band	-6.5		6.5	nm
Pass Band Ripple			0.5	dB
Center Wavelength (Channel)	1271		1451	nm
Channel Spacing (nm)		20		nm
Channel Insertion Loss			3	dB
Return Loss	45			dB

Click the following link (or enter part number in "SEARCH" on website) to obtain additional part information including price, inventory and certifications:  
[Passive CWDM, LGX Mux, 8 Channels F \(skip 1391-1411nm\) with 20 nm spacing, starting at Ch 1271nm, LC/APC with Monitor & Pass PCW1M-8F327-](#)

Passive CWDM, LGX Mux, 8 Channels F (skip 1391-1411nm) with 20 nm spacing, starting at Ch 1271nm, LC/APC with Monitor & Pass



## PCW1M-8F327-NN36

Directivity	50	dB
PDL	0.25	dB
PMD	0.2	PS
Power Handling	300	mW
Channel to Monitor Port IL	25	dB
COM to Monitor Port IL	23	dB
IL Thermal Stability	0.005	dB/degC
Wavelength Thermal Stability	0.002	nm/degC

### Size

Length	6.25 in [158.75 mm]
Weight	1 lbs [453.59 g]

### Environmental Specifications

#### Temperature

Operating Range	-20 to +65 deg C
Storage Range	-40 to +85 deg C
Humidity	5-98 %RH

### Compliance Certifications (see [product page](#) for current document)

### Plotted and Other Data

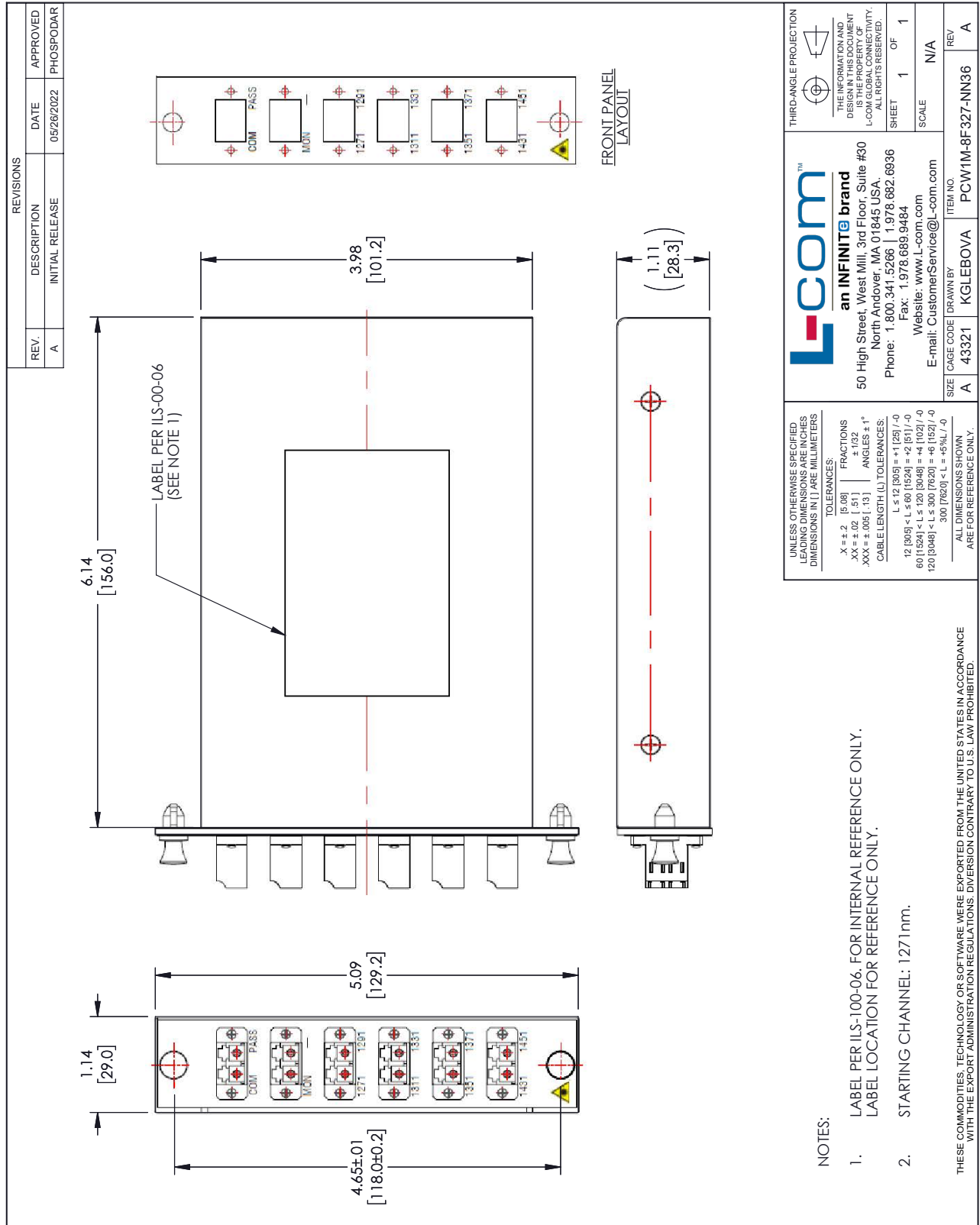
Notes:

Passive CWDM, LGX Mux, 8 Channels F (skip 1391-1411nm) with 20 nm spacing, starting at Ch 1271nm, LC/APC with Monitor & Pass from L-com has same day shipment for domestic and International orders. Our portfolio includes coaxial cable assemblies, connectors, adapters and custom products as well as lightning and surge protectors, NEMA rated enclosures, and an RF product line which includes antennas, amplifiers, passive, and active components.

The information contained within this document is accurate to the best of our knowledge and representative of the part described herein. It may be necessary to make modifications to the part and/or the documentation of the part in order to implement improvements. L-com reserves the right to make such changes as required. Unless otherwise stated, all specifications are nominal. L-com does not make any representation or warranty regarding the suitability of the part described herein for any particular purpose, and L-com does not assume liability arising out of the use of any part or document.

Passive CWDM, LGX Mux, 8 Channels F (skip 1391-1411nm) with 20 nm spacing, starting at Ch 1271nm, LC/APC with Monitor & Pass

L-com CAD Drawing



REVISIONS		
REV.	DESCRIPTION	DATE
A	INITIAL RELEASE	05/26/2022
		PHOSPODAR

UNLESS OTHERWISE SPECIFIED LEADING DIMENSIONS ARE IN INCHES DIMENSIONS IN [ ] ARE MILLIMETERS

TOLERANCES:  
 .X = ±.2 [5.08] FRACTIONS ± 1/32  
 .XX = ±.02 [ .51] ANGLES ± 1°  
 .XXX = ±.005 [ .13] CABLE LENGTH (L) TOLERANCES:  
 L ≤ 12 [305] < L ≤ 60 [1524] = ±1 [25] / -0  
 60 [1524] < L ≤ 120 [3048] = ±4 [102] / -0  
 120 [3048] < L ≤ 300 [7620] = ±6 [152] / -0  
 300 [7620] < L = +5% / -0

ALL DIMENSIONS SHOWN ARE FOR REFERENCE ONLY.

THIRD-ANGLE PROJECTION

THE INFORMATION AND DIMENSIONS CONTAINED HEREIN IS THE PROPERTY OF L-COM GLOBAL CONNECTIVITY. ALL RIGHTS RESERVED.

SHEET 1 OF 1

SCALE N/A

REV A

ITEM NO. PCW1M-8F-327-NN36

SIZE A

CAGE CODE 43321

DRAWN BY KGLEBOVA

Website: www.L-com.com  
 E-mail: CustomerService@L-com.com  
 Phone: 1.800.341.5266 | 1.978.682.6936  
 Fax: 1.978.689.9484  
 an INFINITE brand  
 50 High Street, West Mill, 3rd Floor, Suite #30  
 North Andover, MA 01845, USA.

- NOTES:
- LABEL PER ILS-100-06. FOR INTERNAL REFERENCE ONLY.  
LABEL LOCATION FOR REFERENCE ONLY.
  - STARTING CHANNEL: 1271nm.
- THESE COMMODITIES, TECHNOLOGY OR SOFTWARE WERE EXPORTED FROM THE UNITED STATES IN ACCORDANCE WITH THE EXPORT ADMINISTRATION REGULATIONS. DIVERSION CONTRARY TO U.S. LAW PROHIBITED.