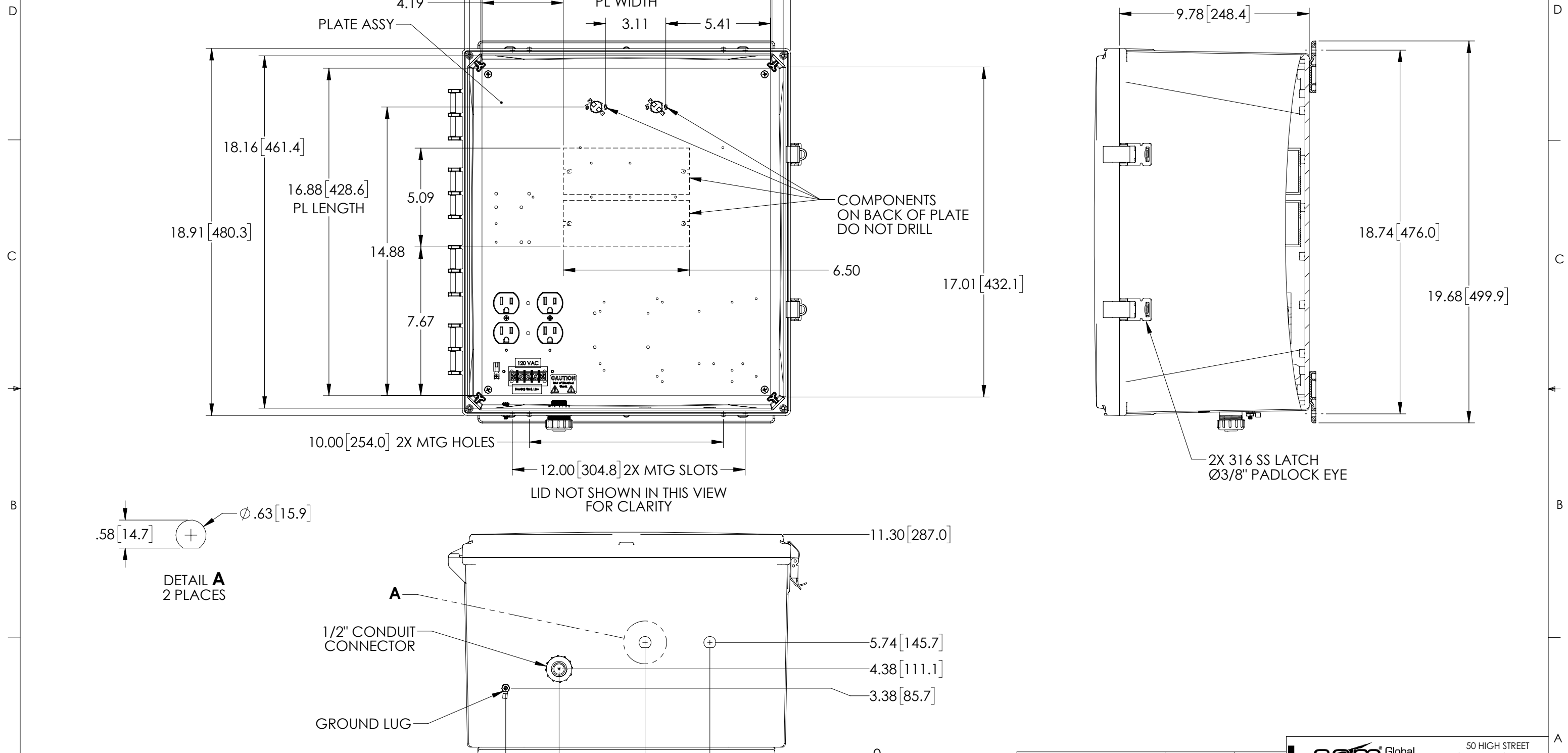


THE INFORMATION CONTAINED IN THIS DRAWING IS THE SOLE PROPERTY OF L-COM, INC. ANY REPRODUCTIONS IN PART OR WHOLE WITHOUT THE WRITTEN PERMISSION OF L-COM, INC. IS PROHIBITED.

REVISIONS			
REV	DESCRIPTION	DATE	CHANGED BY
A	INITIAL RELEASE	05/17/2019	MMARTINEZ



**NOTES:**

- ENCLOSURE MATERIAL-DARK GRAY (PANTONE 422C) HIGH-IMPACT UV RESISTANT POLYCARBONATE.
- TEMPERATURE RANGE: -40°F TO 265°F.
- CABINETS ARE MAINTENANCE FREE AND CORROSION RESISTANT.
- SHALL BE PACKAGED AS PER L-COM SPEC.
- ALL DIMENSIONS FOR REFERENCE ONLY.
- WALL MOUNT BRACKETS COME UNINSTALLED, INSIDE ENCLOSURE, BAGGED WITH HARDWARE.

UNLESS OTHERWISE SPECIFIED, DIMENSIONS ARE IN INCHES [mm]  
 DIMENSIONAL TOLERANCES:  
 .X = ±.1 [2.54]  
 .XX = ±.01 [.25]  
 .XXX = ±.005 [.13]  
 ANGULAR TOLERANCES:  
 ALL = ± 1°

APPROVALS	DATE
DZINN	05/17/2019
DFRISIELLO	05/17/2019
MMARTINEZ	05/17/2019

**L-com** Global Connectivity  
 50 HIGH STREET  
 NORTH ANDOVER, MA 01845

CATEGORY: ENCLOSURE

PRODUCT DESCRIPTION: ENCL PC 18x16x10" w/120VAC HEATED MOUNT PLATE

SIZE: <b>B</b>	FSCM NO.: 43321	DWG. NO.: NBPC181610-1H0	REV.: A
----------------	-----------------	--------------------------	---------

SCALE: 1:5 CAD FILE: NBPC181610-1H0.SLDDRW SHEET 1 OF 1

