

18x16x10 UL Listed Polycarbonate Weatherproof NEMA 4X IP66 Enclosure, 120 VAC Mount Plate, Dark Gray



NBPC181610-100-UL

Features

- UL Listed[®] High-Impact, UV Resistant Polycarbonate (Dark Gray)
- Stainless steel latches with padlock eye
- NEMA Type 4X / IP66* rated (includes (4x) optional lid corner screws**)
- Fully gasketed lid & user installed wall mounting brackets
- Features aluminum mounting plate with surge protected duplex 120 VAC outlets

Applications

- Indoor and outdoor installations
- Protection of equipment from theft or damage
- Rapid Deployment Installations
- Corrosive environments & hotspot applications
- Remote Wireless LAN WiFi equipment installations

Description

UL[®] Listed Enclosures

The NBPC181610-100-UL is approved and listed with UL, meeting the stringent requirements for Communication Enclosure System 40XX.

The UL listing number is E326684. Use this enclosure when UL listed products are required by the project. Other UL listed enclosures are available with many popular features.

The box is a rugged weatherproof enclosure that is ideal for both indoor and outdoor applications. Constructed from High-Impact, UV Resistant Polycarbonate material that provides superior durability to impacts and ease of modification while maintaining minimum weight. It is well suited for high temperature or corrosive environments. The included wall mount brackets come uninstalled and bagged with their hardware inside of the enclosure. Once the brackets are installed the enclosure can be mounted directly to any flat wall surface provided proper screws are used into secure studs. The brackets, once installed, also allow you to use our HGX-PMT pole mount kits. The lid features a non-metallic hinge system that allows for quick removal & can be reattached just as quickly without the need for any tools. The enclosure comes with a pair of stainless-steel latches with padlock eyes allowing you to secure the enclosure from tampering. The enclosure comes in Dark Gray (Pantone 422C).

Mounting Plate

The aluminum mounting plate included with the NBPC181610-100-UL features standard surge protected duplex 120 VAC outlets and a terminal block for easy hook up to externally provided line power. The enclosure also features holes for two N-Bulkhead lightning protectors or connectors, a grounding lug and cable conduit connector.

The HGX-PMT series of pole mounting kits allow the populated enclosure to be securely mounted to a variety of different size poles.

Compatible versions include HGX-PMT13, HGX-PMT16, HGX-PMT28, HGX-PMT29, HGX-PMT30 & HGX-PMT33

*Note: Enclosure ports (Cable conduit connector and N-type holes for lightning protectors or connectors) must be properly sealed to maintain NEMA Type 4X / IP66 rating

**Note: If all four of the optional lid screws are installed the enclosure can achieve. NEMA 6P / IP68 however all of the openings would have to be properly sealed with an IP68 rated plug, gland or coupler

Weight	17.3 lbs	[7.85 kg]
Enclosure Material	Polycarbonate	

Click the following link (or enter part number in "SEARCH" on website) to obtain additional part information including price, inventory and certifications:
[18x16x10 UL Listed Polycarbonate Weatherproof NEMA 4X IP66 Enclosure, 120 VAC Mount Plate, Dark Gray NBPC181610-100-UL](#)

18x16x10 UL Listed Polycarbonate Weatherproof NEMA 4X
IP66 Enclosure, 120 VAC Mount Plate, Dark Gray



NBPC181610-100-UL

Compliance Certifications

UL Listed

E326684

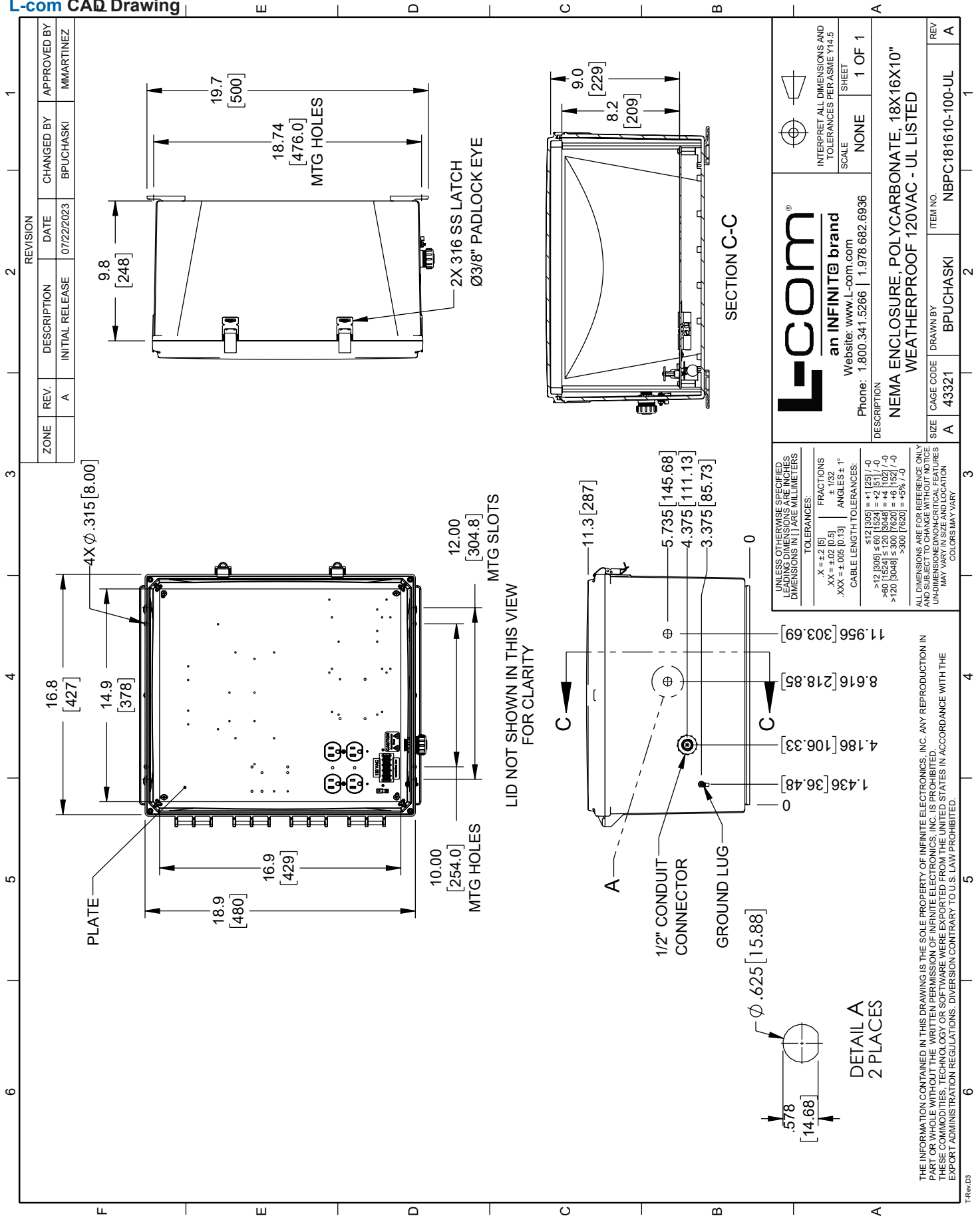
18x16x10 UL Listed Polycarbonate Weatherproof NEMA 4X IP66 Enclosure, 120 VAC Mount Plate, Dark Gray from L-com has same day shipment for domestic and International orders. Our portfolio includes coaxial cable assemblies, connectors, adapters and custom products as well as lightning and surge protectors, NEMA rated enclosures, and an RF product line which includes antennas, amplifiers, passive, and active components. Click the following link (or enter part number in "SEARCH" on website) to obtain additional part information including price, inventory and certifications: 18x16x10 UL Listed Polycarbonate Weatherproof NEMA 4X IP66 Enclosure, 120 VAC Mount Plate, Dark Gray NBPC181610-100-UL

URL:

The information contained within this document is accurate to the best of our knowledge and representative of the part described herein. It may be necessary to make modifications to the part and/or the documentation of the part in order to impliment improvements. L-com reserves the right to make such changes as required. Unless otherwise stated, all specifications are nominal. L-com does not make any representation or warranty regarding the suitability of the part described herein for any particular purpose, and L-com does not assume liability arising out of the use of any part or document.

The information contained within this document is accurate to the best of our knowledge and representative of the part described herein. It may be necessary to make modifications to the part and/or the documentation of the part in order to impliment improvements. L-com reserves the right to make such changes as required. Unless otherwise stated, all specifications are nominal. L-com does not make any representation or warranty regarding the suitability of the part described herein for any particular purpose, and L-com does not assume liability arising out of the use of any part or document.

L-com CAD Drawing



REVISION		DATE	CHANGED BY	APPROVED BY
ZONE	REV.	DESCRIPTION	INITIAL RELEASE	DATE
	A			07/22/2023
			BPUCHASKI	MMARTINEZ

 L-com an INFINITE brand Website: www.L-com.com Phone: 1.800.341.5266 1.978.682.6936		INTERPRET ALL DIMENSIONS AND TOLERANCES PER ASME Y14.5 SCALE: NONE SHEET: 1 OF 1
DESCRIPTION: NEMA ENCLOSURE, POLYCARBONATE, 18X16X10" WEATHERPROOF 120VAC - UL LISTED		
SIZE: A	CAGE CODE: 43321	ITEM NO.: NBPC181610-100-UL
DRAWN BY: BPUCHASKI		REV: A

UNLESS OTHERWISE SPECIFIED LEADING DIMENSIONS ARE INCHES DIMENSIONS IN [] ARE MILLIMETERS

TOLERANCES:
 X = ±0.151
 XX = ±0.02 [0.51]
 XXX = ±0.005 [0.13]

FRACTIONS: ±.132
 ANGLES: ± 1°

CABLE LENGTH TOLERANCES:
 ≤12 [305] = +1 [25] / -0
 ≤60 [1524] = 0
 ≤120 [3048] = ±0.125 [3.175]
 ≤300 [7620] = ±0.125 [3.175]
 >300 [7620] = +5% / -0

ALL DIMENSIONS ARE FOR REFERENCE ONLY AND SUBJECT TO CHANGE WITHOUT NOTICE UNLESS INDICATED OTHERWISE IN CRITICAL FEATURES MAY VARY IN SIZE AND LOCATION COLORS MAY VARY

THE INFORMATION CONTAINED IN THIS DRAWING IS THE SOLE PROPERTY OF INFINITE ELECTRONICS, INC. ANY REPRODUCTION IN PART OR WHOLE WITHOUT THE WRITTEN PERMISSION OF INFINITE ELECTRONICS, INC. IS PROHIBITED. THESE COMMODITIES, TECHNOLOGY OR SOFTWARE WERE EXPORTED FROM THE UNITED STATES IN ACCORDANCE WITH THE EXPORT ADMINISTRATION REGULATIONS. DIVERSION CONTRARY TO U.S. LAW PROHIBITED.

1.0 REV 1.0 | © 2020 Infinite Electronics, Inc. L-com is a registered trademark of Infinite Electronics, Inc.
 USA & Canada +1(800) 341-5266 | International +1(978) 682-6936 | L-com.com