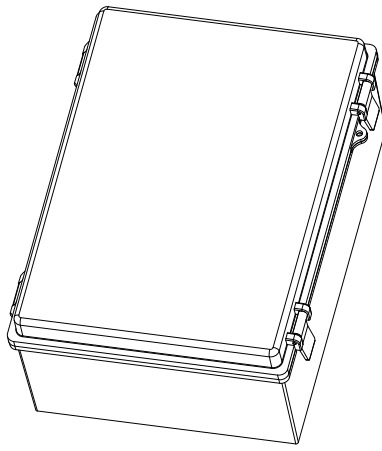
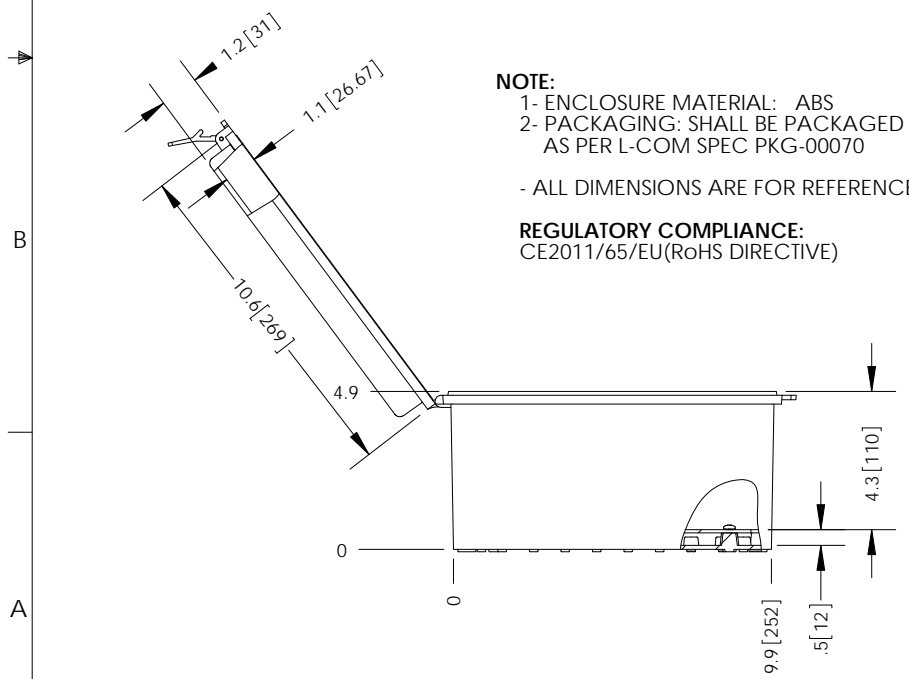
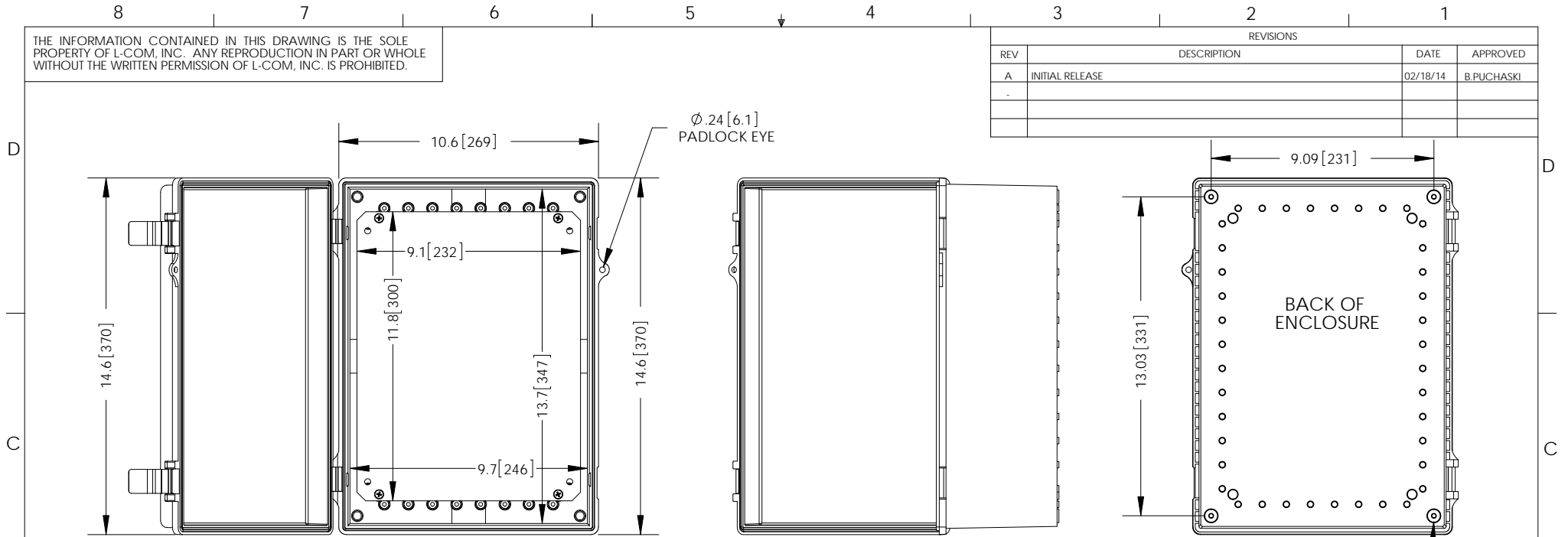


THE INFORMATION CONTAINED IN THIS DRAWING IS THE SOLE PROPERTY OF L-COM, INC. ANY REPRODUCTION IN PART OR WHOLE WITHOUT THE WRITTEN PERMISSION OF L-COM, INC. IS PROHIBITED.

REVISIONS			
REV	DESCRIPTION	DATE	APPROVED
A	INITIAL RELEASE	02/18/14	B.PUCHASKI



M5X0.8 THREADED INSERT FOR MOUNTING (4X)

UNLESS OTHERWISE SPECIFIED, DIMENSIONS ARE IN INCHES [mm] DIMENSIONAL TOLERANCES: .X = ±.1 [2.54] .XX = ±.01 [.25] .XXX = ±.005 [.13] ANGULAR TOLERANCES: ALL = ± 1° PROJECTION 	APPROVALS	DATE		45 BEECHWOOD DRIVE NORTH ANDOVER, MA 01845		
	DRAWN BY B.PUCHASKI	02/18/14				
	CHECKED BY P.PESA	02/18/14	CATEGORY	ENCLOSURE		
	APPROVED BY P.PESA	02/18/14	PRODUCT DESCRIPTION NEMA ENCLOSURE 14 X 10 X 6 WEATHERPROOF W/BLANK ALUMINUM PLATE			
			SIZE A	FSCM NO. 43321	DWG. NO. NBE141006-KIT	REV. A
			SCALE: NONE	CAD FILE: NBE141006-KIT.SLDRW	SHEET 1 OF 1	