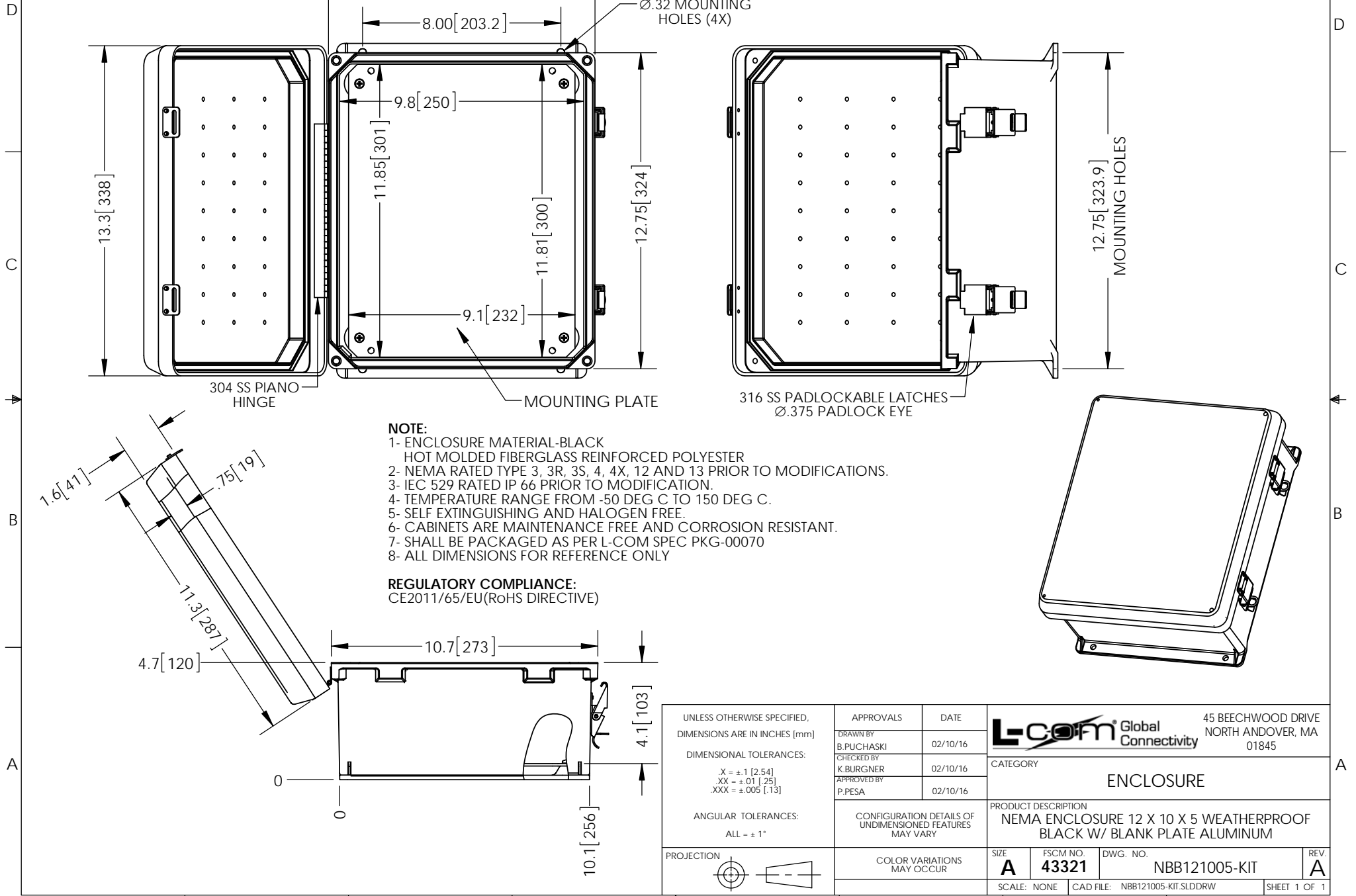


THE INFORMATION CONTAINED IN THIS DRAWING IS THE SOLE PROPERTY OF L-COM, INC. ANY REPRODUCTION IN PART OR WHOLE WITHOUT THE WRITTEN PERMISSION OF L-COM, INC. IS PROHIBITED.

REVISIONS			
REV	DESCRIPTION	DATE	APPROVED
A	INITIAL RELEASE	2/11/16	D.GRIFFIN



- NOTE:**
- 1- ENCLOSURE MATERIAL-BLACK HOT MOLDED FIBERGLASS REINFORCED POLYESTER
  - 2- NEMA RATED TYPE 3, 3R, 3S, 4, 4X, 12 AND 13 PRIOR TO MODIFICATIONS.
  - 3- IEC 529 RATED IP 66 PRIOR TO MODIFICATION.
  - 4- TEMPERATURE RANGE FROM -50 DEG C TO 150 DEG C.
  - 5- SELF EXTINGUISHING AND HALOGEN FREE.
  - 6- CABINETS ARE MAINTENANCE FREE AND CORROSION RESISTANT.
  - 7- SHALL BE PACKAGED AS PER L-COM SPEC PKG-00070
  - 8- ALL DIMENSIONS FOR REFERENCE ONLY

**REGULATORY COMPLIANCE:**  
CE2011/65/EU(RoHS DIRECTIVE)

UNLESS OTHERWISE SPECIFIED, DIMENSIONS ARE IN INCHES [mm]	APPROVALS	DATE		45 BEECHWOOD DRIVE NORTH ANDOVER, MA 01845
	DRAWN BY B.PUCHASKI	02/10/16		
DIMENSIONAL TOLERANCES: .X = ±.1 [2.54] .XX = ±.01 [.25] .XXX = ±.005 [.13]	CHECKED BY K.BURGNER	02/10/16	CATEGORY ENCLOSURE	
	APPROVED BY P.PESA	02/10/16	PRODUCT DESCRIPTION NEMA ENCLOSURE 12 X 10 X 5 WEATHERPROOF BLACK W/ BLANK PLATE ALUMINUM	
ANGULAR TOLERANCES: ALL = ± 1°	CONFIGURATION DETAILS OF UNDIMENSIONED FEATURES MAY VARY		SIZE <b>A</b>	FSCM NO. <b>43321</b>
PROJECTION 	COLOR VARIATIONS MAY OCCUR		DWG. NO. NBB121005-KIT	REV. <b>A</b>
SCALE: NONE			CAD FILE: NBB121005-KIT.SLDDRW	
			SHEET 1 OF 1	