



Lightning Rod, Single Spire Rooftop

Data Surge Protection Device Technical Data Sheet

LR-1RT-LC

Features

- Prevent direct lightning strikes
- Route lightning energy safely into the grounding system if strikes occur
- Multi-spire versions available

Applications

- Rooftops
- Superstructures
- Chimneys
- Outdoor Equipment

Description

Lightning rod LR-1RT-LC from L-com protects buildings, equipment and personnel from the damaging effects of direct lightning strikes. This lightning rod is constructed from highly conductive aluminum and is geometrically designed to maximize effectiveness. L-com lightning rod products are available in stock with same day shipping.

Environmental Specifications

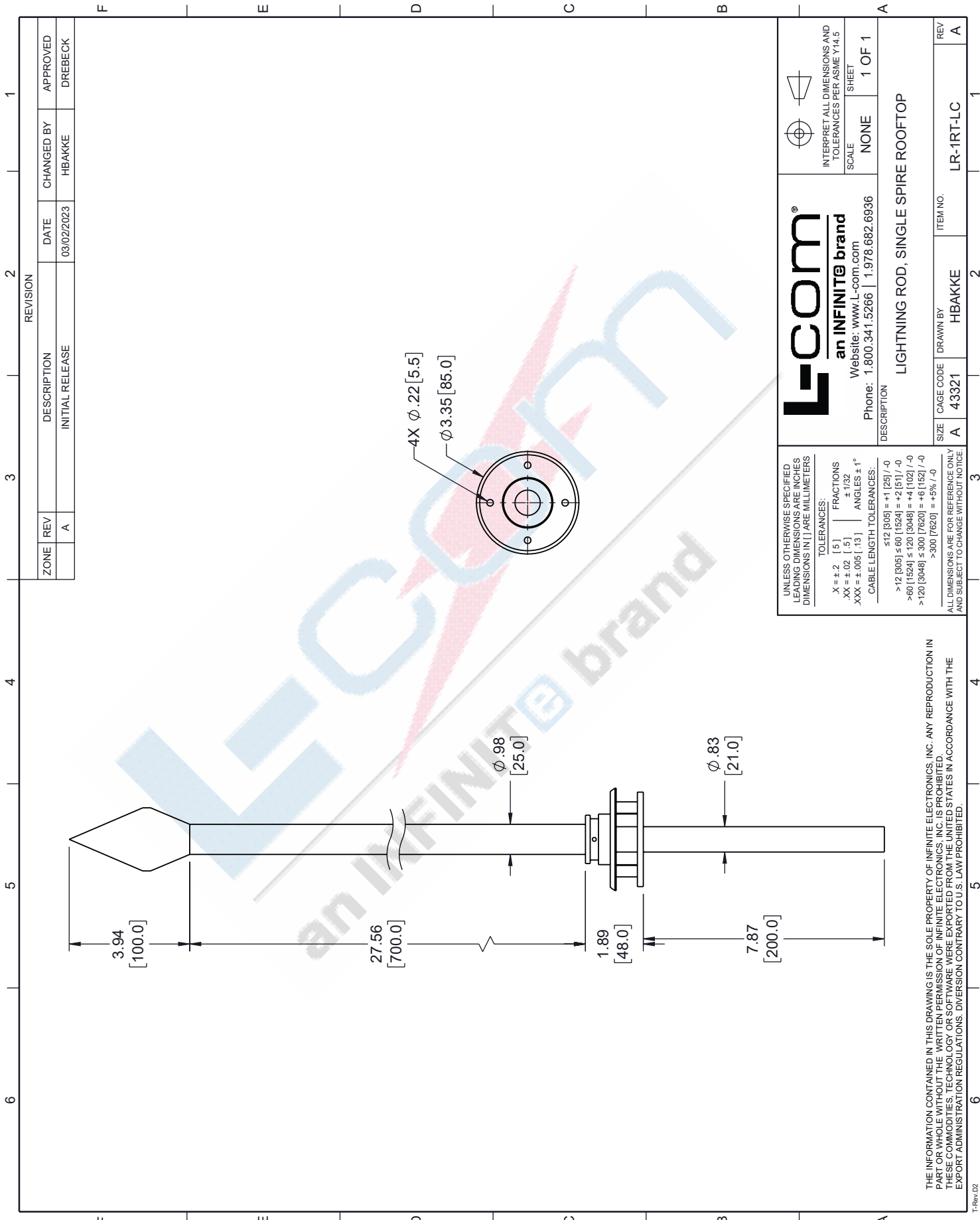
Operating Temperature	-40 to +80 deg C
Mount Type	Rooftop

Our portfolio includes coaxial cable assemblies, connectors, adapters and custom products as well as lightning and surge protectors, NEMA rated enclosures, and an RF product line which includes antennas, amplifiers, passive, and active components.

The information contained in this document is accurate to the best of our knowledge and representative of the part described herein. It may be necessary to make modifications to the part and/or the documentation of the part, in order to implement improvements. L-com reserves the right to make such changes as required. Unless otherwise stated, all specifications are nominal. L-com does not make any representation or warranty regarding the suitability of the part described herein for any particular purpose, and L-com does not assume any liability arising out of the use of any part or documentation.

LR-1RT-LC CAD Drawing

Lightning Rod, Single Spire Rooftop



ZONE		REV		DESCRIPTION		DATE		CHANGED BY		APPROVED	
		A		INITIAL RELEASE		03/02/2023		HBAKKE		DREBECK	

ZONE		REV		DESCRIPTION		DATE		CHANGED BY		APPROVED	
		A		INITIAL RELEASE		03/02/2023		HBAKKE		DREBECK	

L-com
an INFINITE brand
Website: www.L-com.com
Phone: 1.800.341.5266 | 1.978.682.6936

INTERPRET ALL DIMENSIONS AND TOLERANCES PER ASME Y14.5
SCALE NONE SHEET 1 OF 1

DESCRIPTION
LIGHTNING ROD, SINGLE SPIRE ROOFTOP

SIZE	CAGE CODE	DRAWN BY	ITEM NO.	REV
A	43321	HBAKKE	LR-1RT-LC	A

TOLERANCES:

UNLESS OTHERWISE SPECIFIED LEADING DIMENSIONS ARE INCHES DIMENSIONS IN [] ARE MILLIMETERS

.X = ±.2 [5] | FRACTIONS ± 1/32
 .XX = ±.02 [.5] | ANGLES ± 1°
 .XXX = ±.005 [.13]

CABLE LENGTH TOLERANCES:
 ≤ 12 [305] = +1 [25] / -0
 > 12 [305] ≤ 60 [1524] = +2 [51] / -0
 > 60 [1524] ≤ 120 [3048] = +4 [102] / -0
 > 120 [3048] ≤ 300 [7620] = +6 [152] / -0
 > 300 [7620] = +5% / -0

ALL DIMENSIONS ARE FOR REFERENCE ONLY AND SUBJECT TO CHANGE WITHOUT NOTICE.

THE INFORMATION CONTAINED IN THIS DRAWING IS THE SOLE PROPERTY OF INFINITE ELECTRONICS, INC. ANY REPRODUCTION IN WHOLE OR IN PART WITHOUT THE WRITTEN PERMISSION OF INFINITE ELECTRONICS, INC. IS PROHIBITED. THESE DIMENSIONS AND TOLERANCES ARE FOR REFERENCE ONLY AND SUBJECT TO CHANGE WITHOUT NOTICE. EXPORT ADMINISTRATION REGULATIONS, DIVERSION CONTRARY TO U.S. LAW PROHIBITED.