



# Data Surge Protector, Outdoor, Gigabit Ethernet PoE++ Shielded RJ45 SASD, GDT

## Data Surge Protection Device Technical Data Sheet

## LPXT-WP-GB-POE++60V

### Features

- UL 497B, EN/IEC60950-1
- Gigabit Ethernet/PoE++
- Patented Weatherized Wiring Grommet
- Configurable Weep Holes
- Shielded RJ-45
- Conformal Coated PCBA
- Dielectric Lube to Weatherize RJ-45 Connections
- Pole or Wall Mount

### Applications

- Gigabit Ethernet/PoE++ Networks
- Telecommunications Base Stations
- WISP/ISP
- IT & Data Centers
- Point-to-Point Links
- Control Lines and Sense Loops
- Oil & Gas

### Description

Data surge protector (also known as SPD or lightning protector) LPXT-WP-GB-POE++60V from L-com is an outdoor style SPD that utilizes state of the art SASD/GDT technology to protect critical equipment in Gigabit Ethernet/PoE++ protocol data networks while remaining transparent to data throughput. This surge protector provides effective protection against electrical transient surges that are generated both by external lightning events and by internal switching events and supports long-term system reliability by absorbing high amounts of transient energy while maintaining a very low clamping voltage. L-com Data Signal surge protectors are available in stock with same day shipping.

### Electrical Specifications

Description	Minimum	Typical	Maximum	Units
Connectors		Shielded RJ45		
Compatible Cables		Cat5/5e UTP/STP, Cat6/6A STP		
Data Protocols		Gigabit Ethernet/PoE++		
Data Rate			1,000	Mb/s
Characteristic Impedance			100	Ohms
Power over Ethernet Protocols		PoE++		
Vdc Rating (Data)		48	60	Vdc
PoE Power			100	W
PoE Current Per Pin			1.5	A



an INFINIT® brand



Data Surge Protector, Outdoor, Gigabit Ethernet  
PoE++ Shielded RJ45 SASD, GDT

## Data Surge Protection Device Technical Data Sheet

LPXT-WP-GB-POE++60V

### Surge Protection Specification

Description	Minimum	Typical	Maximum	Units
Surge Protection Technology		SASD, GDT		
Protected Pins		[1,2], [3,6], [4,5], [7,8]		
Protection Modes		L-G, L-L, S-G		
8/20µs Surge Current				
L-G			2	kA
L-L			0.1	kA
S-G			20	kA
Response Time			5	ns

### Mechanical Specifications

#### Size

Height	0.94 in	[23.88 mm]
Width	0.97 in	[24.64 mm]
Depth	3.67 in	[93.22 mm]
Weight	0.2 lbs	[90.72 g]

### Environmental Specifications

Operating Temperature	-40 to +65 deg C
Storage Temperature	-40 to +75 deg C

Environmental Protection Rating	IP65, NEMA 3R
Mount Type	Pole/Wall
Installation Hardware	Combination Drive Screw
Grounding	#10 - #12 AWG Ring Terminal

### Compliance Certifications

RoHS Compliant	Yes
CE Compliant	Yes
UL Compliant	Yes
Certifications	UL 497B EN/IEC 60950-1

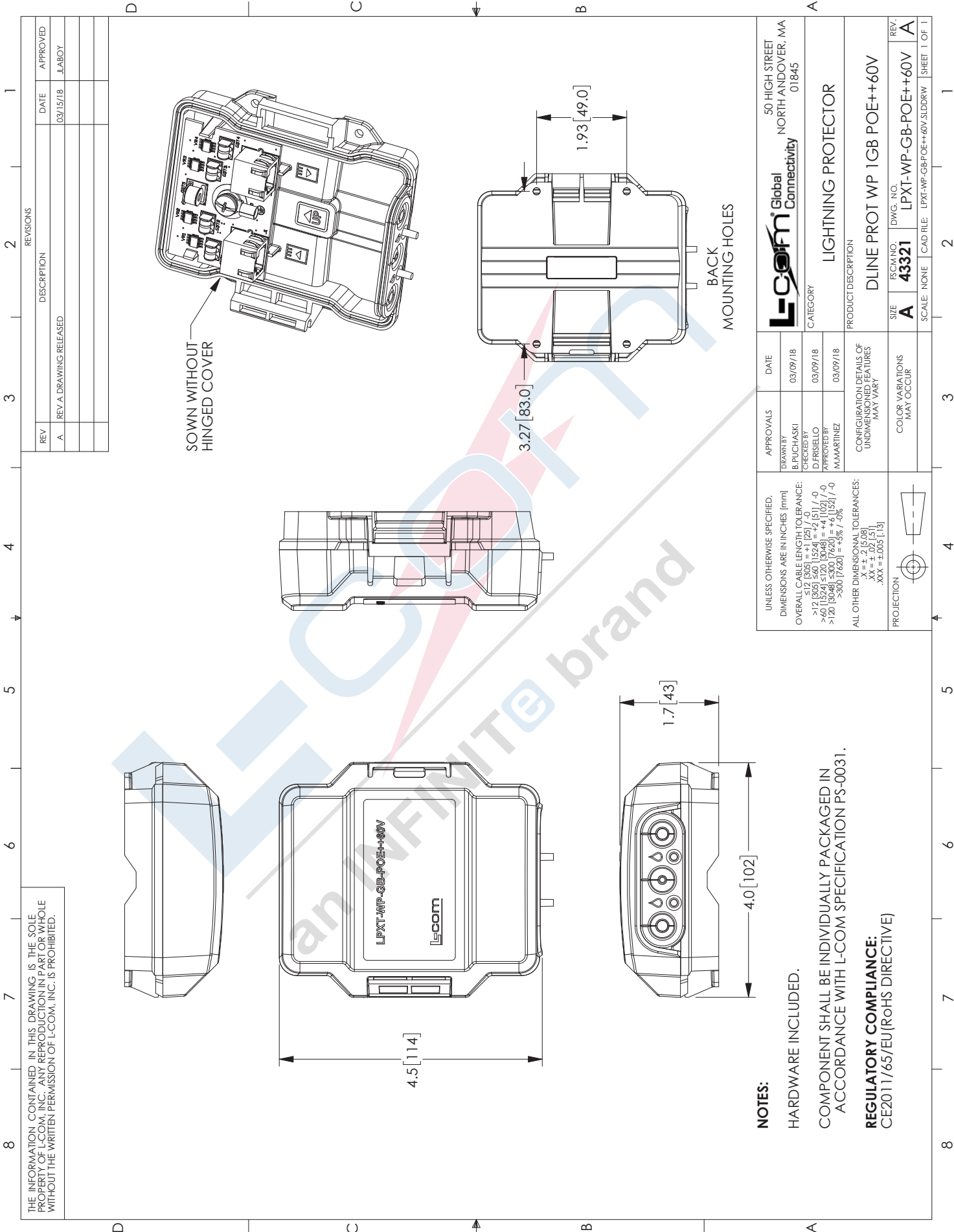
Our portfolio includes coaxial cable assemblies, connectors, adapters and custom products as well as lightning and surge protectors, NEMA rated enclosures, and an RF product line which includes antennas, amplifiers, passive, and active components.

The information contained in this document is accurate to the best of our knowledge and representative of the part described herein. It may be necessary to make modifications to the part and/or the documentation of the part, in order to implement improvements. L-com reserves the right to make such changes as required. Unless otherwise stated, all specifications are nominal. L-com does not make any representation or warranty regarding the suitability of the part

described herein for any particular purpose, and L-com does not assume any liability arising out of the use of any part or documentation.

# LPXT-WP-GB-POE++60V CAD Drawing

Data Surge Protector, Outdoor, Gigabit Ethernet PoE++ Shielded RJ45 SASD, GDT



THE INFORMATION CONTAINED IN THIS DRAWING IS THE SOLE PROPERTY OF L-COM, INC. ANY REPRODUCTION IN PART OR WHOLE WITHOUT THE WRITTEN PERMISSION OF L-COM, INC. IS PROHIBITED.

REV	DESCRIPTION	DATE	APPROVED
A	REV A DRAWING RELEASED	03/15/18	JLABOY

UNLESS OTHERWISE SPECIFIED, DIMENSIONS ARE IN INCHES [mm]	APPROVALS	DATE	<b>L-com</b> Global Connectivity 50 HIGH STREET NORTH ANDOVER, MA 01845				
OVERALL CABLE LENGTH TOLERANCE: $\leq 12$ (305) = +1 (25) / -0 $> 12$ (305) - 5.62 (142.8) = +2 (51) / -0 $> 40$ (1024) - 5.720 (145.08) = +4 (102) / -0 $> 120$ (3048) - 5.840 (148.0) = +4 (102) / -0 $> 300$ (7620) = -0% / +0%	DRAWN BY B. PUCHASKI	03/09/18					
ALL OTHER DIMENSIONAL TOLERANCES: $X = +0$ (0.05) $XX = +0$ (0.13) $XXX = +0.005$ (0.13)	CHECKED BY D. FRISIELLO	03/09/18					
PROJECTION	APPROVED BY M. MARTINEZ	03/09/18	CATEGORY <b>LIGHTNING PROTECTOR</b> PRODUCT DESCRIPTION <b>DLINE PROT WP 1GB POE++60V</b>				
<table border="1"> <tr> <td>SIZE</td> <td>REV. NO.</td> </tr> <tr> <td><b>A</b></td> <td><b>43321</b></td> </tr> </table>	SIZE	REV. NO.	<b>A</b>	<b>43321</b>	COLOR VARIATIONS MAY OCCUR	SCALE: NONE	DWG. NO. <b>LPXT-WP-GB-POE++60V</b> SHEET 1 OF 1
SIZE	REV. NO.						
<b>A</b>	<b>43321</b>						

**NOTES:**  
 HARDWARE INCLUDED.  
 COMPONENT SHALL BE INDIVIDUALLY PACKAGED IN ACCORDANCE WITH L-COM SPECIFICATION PS-0031.  
**REGULATORY COMPLIANCE:**  
 CE2011/65/EU (RoHS DIRECTIVE)