

900, 1800 MHz Omni Antenna 5.5 dBi Gain, 5 mm Spring
FME Male Connector, Black Stainless Steel



LCANOM1079

Features

- 5mm Spring Diameter
- Vertically Polarized
- 5.5 dBi Gain
- FME Male Connector
- 14.75 ft RG58 Cable
- Black Stainless Steel

Applications

- Offroad/Overland Vehicles
- Mining/Industrial Heavy Equipment
- Commercial Trucking
- Fleet Management
- Farm Equipment

Description

The L-com LCANOM1079 is a dual band antenna that ships on the same day as ordered. Our vertical polarized antenna with 880 to 960 MHz and 1710 to 1880 MHz frequency range has a FME male connectors. This antenna made of stainless steel has an overall length of 39.37 in, a width of 2 in, and a weight of 2.2 lbs.

L-com's LCANOM1079 is a dual band antenna operating from 880 to 960 MHz and 1710 to 1880 MHz with 5.5 dBi gain. The omni directional antenna has a maximum input VSWR of 2:1.

L-com has one of the largest in-stock collections of omni directional antennas with our wide selection of superior quality RF parts, that ship same day. Make your online purchase right now to take advantage of our same-day shipping. For further information on similar products, our expert technical support and knowledgeable sales team can help you get the ideal dual band antenna as per your requirement.

Configuration

Band Type	Dual
Radiation Pattern	Omni Directional
Polarization	Vertical
Connector Type	FME Male

Electrical Specifications

Description	Minimum	Typical	Maximum	Units
Frequency Range	880		1,880	MHz
Input VSWR			2:1	
Impedance		50		Ohms
Gain		5.5		dBi
Input Power			100	Watts

Specifications by Band

Click the following link (or enter part number in "SEARCH" on website) to obtain additional part information including price, inventory and certifications:
[900, 1800 MHz Omni Antenna 5.5 dBi Gain, 5 mm Spring FME Male Connector, Black Stainless Steel LCANOM1079](#)

900, 1800 MHz Omni Antenna 5.5 dBi Gain, 5 mm Spring
FME Male Connector, Black Stainless Steel



LCANOM1079

Description	Band 1	Band 2	Band 3	Band 4	Band 5	Units
Range	0.88 to 0.96	1.71 to 1.88				GHz
Gain	5.5	5.5				dBi
Maximum Input Power	100	100				Watts

Mechanical Specifications

Radome Material	Stainless Steel
Size	
Length	39.37 in [100 cm]
Width	2 in [50.8 mm]
Height	2 in [50.8 mm]
Weight	2.2 lbs [997.9 g]

Environmental Specifications

Temperature	
Operating Range	-40 to +80 deg C

Compliance Certifications (see [product page](#) for current document)

Plotted and Other Data

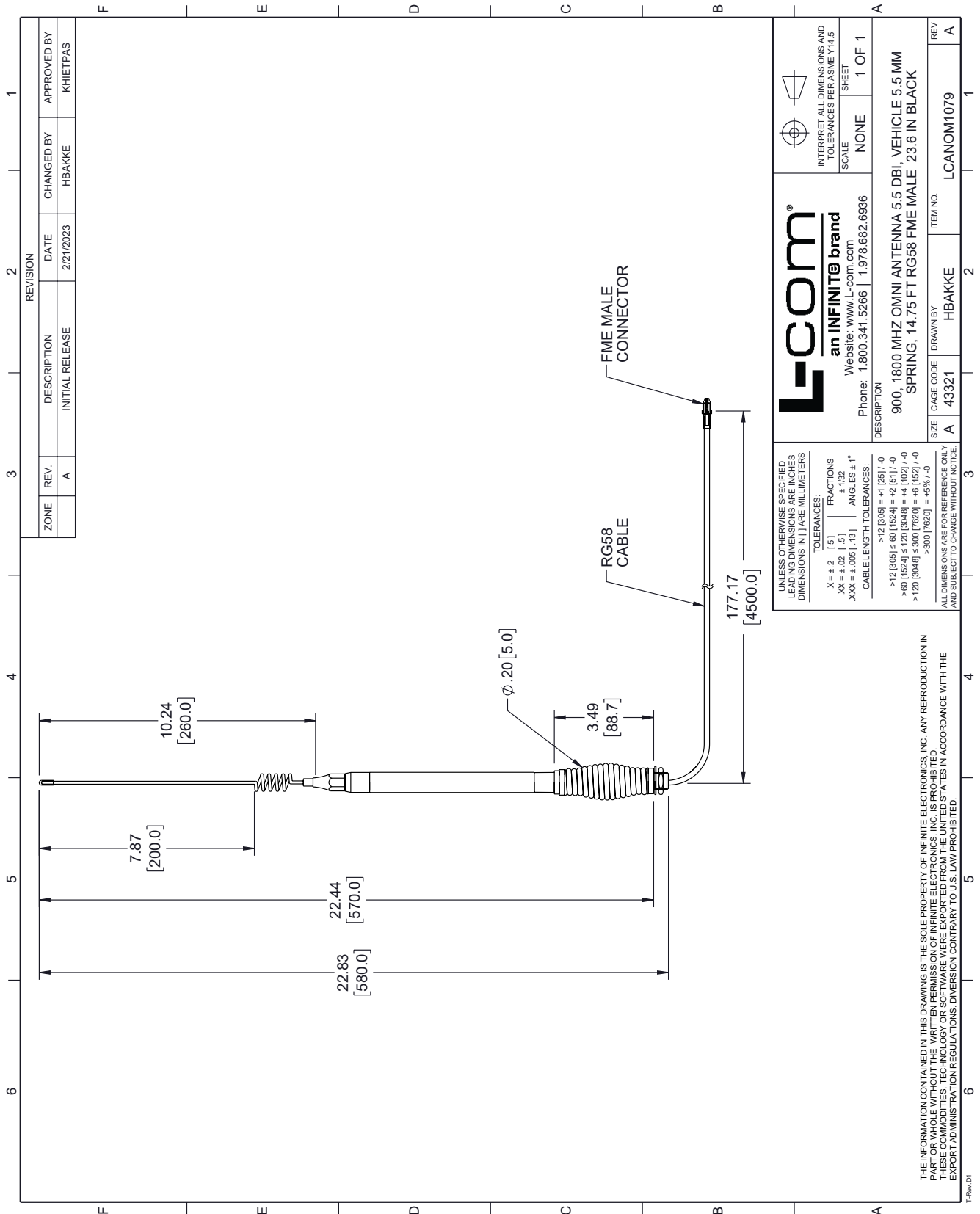
Notes:

900, 1800 MHz Omni Antenna 5.5 dBi Gain, 5 mm Spring FME Male Connector, Black Stainless Steel from L-com has same day shipment for domestic and International orders. Our portfolio includes coaxial cable assemblies, connectors, adapters and custom products as well as lightning and surge protectors, NEMA rated enclosures, and an RF product line which includes antennas, amplifiers, passive, and active components.

The information contained within this document is accurate to the best of our knowledge and representative of the part described herein. It may be necessary to make modifications to the part and/or the documentation of the part in order to impliment improvements. L-com reserves the right to make such changes as required. Unless otherwise stated, all specifications are nominal. L-com does not make any representation or warranty regarding the suitability of the part described herein for any particular purpose, and L-com does not assume liability arising out of the use of any part or document.

900, 1800 MHz Omni Antenna 5.5 dBi Gain, 5 mm Spring FME Male Connector, Black Stainless Steel

L-com CAD Drawing



REVISION			
ZONE	REV.	DESCRIPTION	DATE
	A	INITIAL RELEASE	2/21/2023

ZONE	REV.	DESCRIPTION	DATE	CHANGED BY	APPROVED BY
	A	INITIAL RELEASE	2/21/2023	HBAKKE	KHIETPAS

L-com
an INFINITE brand
Website: www.L-com.com
Phone: 1.800.341.5266 | 1.978.682.6936

INTERPRET ALL DIMENSIONS AND TOLERANCES PER ASME Y14.5
SCALE: NONE
SHEET: 1 OF 1

UNLESS OTHERWISE SPECIFIED, LEADING DIMENSIONS ARE IN INCHES, DIMENSIONS IN [] ARE MILLIMETERS.

TOLERANCES:
 X = ±.2 [5] FRACTIONS
 XX = ±.02 [5] ANGLES ±1°
 XXX = ±.005 [13]

CABLE LENGTH TOLERANCES:
 >12 [305] = ±1 [25] / -0
 >60 [1524] = ±2 [51] / -0
 >120 [3048] = ±3 [76.2] / -0
 >300 [7620] = ±5% / -0

ALL DIMENSIONS ARE FOR REFERENCE ONLY AND SUBJECT TO CHANGE WITHOUT NOTICE.

DESCRIPTION: 900, 1800 MHZ OMNI ANTENNA 5.5 DBI, VEHICLE 5.5 MM SPRING, 14.75 FT RG58 FME MALE 23.6 IN BLACK

SIZE	CAGE CODE	DRAWN BY	ITEM NO.
A	43321	HBAKKE	LCANOM1079

THE INFORMATION CONTAINED IN THIS DRAWING IS THE SOLE PROPERTY OF INFINITE ELECTRONICS, INC. ANY REPRODUCTION IN PART OR WHOLE WITHOUT THE WRITTEN PERMISSION OF INFINITE ELECTRONICS, INC. IS PROHIBITED. THESE COMMODITIES, TECHNOLOGY OR SOFTWARE WERE EXPORTED FROM THE UNITED STATES IN ACCORDANCE WITH THE EXPORT ADMINISTRATION REGULATIONS. DIVERSION CONTRARY TO U.S. LAW PROHIBITED.

T-Rev: 01