

32 dBi Active GPS/BeiDou Magnet Mount Antenna  
RHCP 1561/1575 MHz, RG174 SMA Male IP66



## LCANGPS1015

### Features

- SMA Male
- Right Hand Circular Polarized
- 28 dB LNA w/ low 1.5 dB Noise Figure
- Neodymium Rare-Earth Magnet
- IP66 Rated

### Applications

- GPS L1/BDS B1
- High Accuracy Global Positioning
- Precision Agriculture, Mining and Construction
- Law Enforcement and Public Safety
- Vehicle Fleet Management

### Description

The L-com Active GNSS Antenna LCANGPS1015 is Right Hand Circular Polarized with an integrated Neodymium Rare Earth Magnet for a secure mount. The LCANGPS1015 is an active GPS L1 and BDS B1 band antenna with 32 dBi Gain. These Magnet Mount active GNSS antenna units are ideally suited for use on vehicles where low profile, low drag, non-penetrating style antennas are needed.

Our GNSS antenna specialists are ready and available to answer any questions you may have on the LCANGPS1015. This high quality SMA male antenna meets GPS L1 and BDS B1 requirements by operating in the 1559 MHz to 1577 MHz frequency range.

The LCANGPS1015 GNSS antenna series from L-com are designed for mobile, vehicle, or fleet services to receive GNSS signals from satellite constellations to triangulate geolocations for navigation, tracking, and surveying.

### Configuration

Design	GPS Active
Band Type	Single
Polarization	RHCP
Cable Type	RG174
Connector Type	SMA Male
Number of Ports	1

### Electrical Specifications

Description	Minimum	Typical	Maximum	Units
Frequency Range	1,559		1,577	MHz
Input VSWR			2:1	
Output VSWR			2:1	
Impedance		50		Ohms
Gain		32		dBi
Gain Variation		±5		dBi
Operating DC Voltage	3		3.6	Volts
Current	6	9	12	mA

Click the following link (or enter part number in "SEARCH" on website) to obtain additional part information including price, inventory and certifications:  
[32 dBi Active GPS/BeiDou Magnet Mount Antenna RHCP 1561/1575 MHz, RG174 SMA Male IP66 LCANGPS1015](#)

32 dBi Active GPS/BeiDou Magnet Mount Antenna  
RHCP 1561/1575 MHz, RG174 SMA Male IP66



## LCANGPS1015

### Specifications by Band

Description	Band 1	Band 2	Band 3	Band 4	Band 5	Units
Range	1.559-1.563	1.574-1.577				GHz
Center Frequency	1.561	1.575				GHz

### Mechanical Specifications

#### Size

Length	2 in [50.8 mm]
Width	1.7 in [43.18 mm]
Height	0.7 in [17.78 mm]
Weight	1 lbs [453.59 g]

### Environmental Specifications

Ingress Protection	IP66
--------------------	------

**Compliance Certifications** (see [product page](#) for current document)

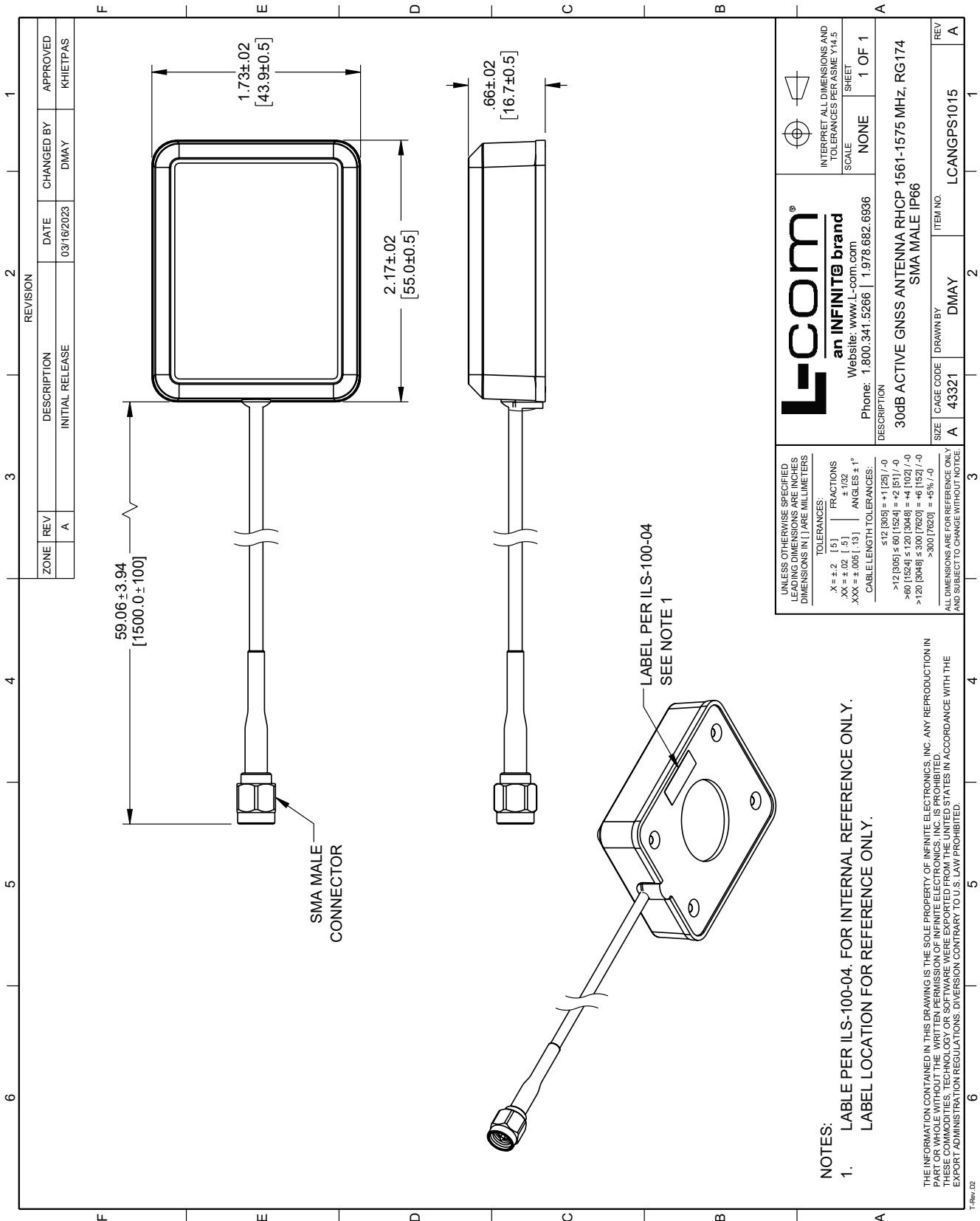
### Plotted and Other Data

Notes:

32 dBi Active GPS/BeiDou Magnet Mount Antenna RHCP 1561/1575 MHz, RG174 SMA Male IP66 from L-com has same day shipment for domestic and International orders. Our portfolio includes coaxial cable assemblies, connectors, adapters and custom products as well as lightning and surge protectors, NEMA rated enclosures, and an RF product line which includes antennas, amplifiers, passive, and active components.

The information contained within this document is accurate to the best of our knowledge and representative of the part described herein. It may be necessary to make modifications to the part and/or the documentation of the part in order to implement improvements. L-com reserves the right to make such changes as required. Unless otherwise stated, all specifications are nominal. L-com does not make any representation or warranty regarding the suitability of the part described herein for any particular purpose, and L-com does not assume liability arising out of the use of any part or document.

L-com CAD Drawing



 <b>L-com</b> <sup>®</sup> an INFINITE brand Website: www.L-com.com Phone: 1.800.341.5266   1.978.682.6936		INTERPRET ALL DIMENSIONS AND TOLERANCES PER ASME Y14.5 SCALE NONE SHEET 1 OF 1
DESCRIPTION 30dB ACTIVE GNSS ANTENNA RHCP 1561-1575 MHz, RG174 SMA MALE IP66		
SIZE	CAGE CODE	ITEM NO.
A	43321	LCANGPS1015
DRAWN BY		REV
DMAY		A

UNLESS OTHERWISE SPECIFIED, LEADING DIMENSIONS ARE INCHES DIMENSIONS IN [ ] ARE MILLIMETERS

TOLERANCES:

X = +.2	(.5)	FRACTIONS
XX = +.02	(.5)	+1/32
XXX = +.005	(.13)	ANGLES ±1°

CABLE LENGTH TOLERANCES:

<12 [305]	±.125 [-.0]
>12 [305]	±.001 [524] = +2 [51] / -0
>60 [1524]	±.001 [524] = +4 [102] / -0
>120 [3048]	±.001 [7620] = +6 [152] / -0
>300 [7620]	±.001 [7620] = +5% / -0

ALL DIMENSIONS ARE FOR REFERENCE ONLY AND SUBJECT TO CHANGE WITHOUT NOTICE

NOTES:

- LABLE PER ILS-100-04. FOR INTERNAL REFERENCE ONLY.  
LABLE LOCATION FOR REFERENCE ONLY.

THE INFORMATION CONTAINED IN THIS DRAWING IS THE SOLE PROPERTY OF INFINITE ELECTRONICS, INC. ANY REPRODUCTION IN PART OR WHOLE WITHOUT THE WRITTEN PERMISSION OF INFINITE ELECTRONICS, INC. IS PROHIBITED. THESE COMMODITIES, TECHNOLOGY OR SOFTWARE WERE EXPORTED FROM THE UNITED STATES IN ACCORDANCE WITH THE EXPORT ADMINISTRATION REGULATIONS. DIVERSION CONTRARY TO U.S. LAW PROHIBITED.

T-Rev: 02