

AC Surge Protector SPD I2R-75K DIN-Rail 347/600 Vac 3-Phase Wye + CM MOV 75 kA, UL 1449 4th Ed. Type 1 and Type 2, TAA



I2R-75KYG600

Features

- UL1449 4th Ed. Type 1/Type 2
- High Capacity MOV Protection
- Visual Suppression Status Indicator
- Dry Contact Remote Annunciation Terminals
- Replaceable Modules I2R-75KR347 and I2R-75KR240 (N-G)
- Wire and Comb Busbar Wiring Terminals
- Reversible Chassis for Top or Bottom Wiring
- DIN-Rail Mount
- No External Backup Fuses Required

Applications

- Electrical Panelboards
- Industrial Automation
- Communications Base Stations
- IT & Data Centers
- Switchgear
- Motor Control Centers
- Automatic Transfer Switches
- Wastewater Treatment
- Oil & Gas
- LED Lighting
- Schools
- Hospitals
- Small Cells
- Intelligent Traffic Systems

Description

AC surge protector (also known as SPD or lightning protector) I2R-75KYG600 from Transtector is a UL1449 4th Ed. Type 1/Type 2 DIN-Rail style SPD that utilizes state of the art MOV technology to protect critical equipment that operates on a 347/600 Vac 3-Phase Wye + CM electrical service. This surge protector provides effective protection against electrical transient surges that are generated both by external lightning events and by internal switching events and supports long-term system reliability by safely shunting high amounts of transient energy while maintaining a very low clamping voltage. Transtector AC surge protectors are available in stock with same day shipping.

Electrical Specifications

Description	Minimum	Typical	Maximum	Units
Service Voltages		347/600		Vac
Service Type		3-Phase Wye + CM		
Frequency	50		60	Hz
Maximum Continuous Operating Voltage (MCOV)				
L - L			840	Vac
L - N			420	Vac
L - G			695	Vac
N - G			275	Vac

Click the following link (or enter part number in "SEARCH" on website) to obtain additional part information including price, inventory and certifications:
[AC Surge Protector SPD I2R-75K DIN-Rail 347/600 Vac 3-Phase Wye + CM MOV 75 kA, UL 1449 4th Ed. Type 1 and Type 2, TAA I2R-75KYG600](#)

AC Surge Protector SPD I2R-75K DIN-Rail 347/600 Vac 3-Phase
 Wye + CM MOV 75 kA, UL 1449 4th Ed. Type 1 and Type 2, TAA



I2R-75KYG600

Surge Protection Specification

Description	Minimum	Typical	Maximum	Units
Surge Protection Technology		MOV		
Protection Modes		L-N, L-L, N-G		
8/20 μ s Surge Current			75	kA
Nominal Discharge Current Rating (In)		10		kA
VPR 8/20 μ s				
L - L			2,500	Vpk
L - N			1,500	Vpk
L - G			2,000	Vpk
N - G			800	Vpk
Response Time			25	ns
SCCR (Short Circuit Current Rating)		200		kAIC

Mechanical Specifications

Size

Height	2.76 in	[70.1 mm]
Width	4 in	[101.6 mm]
Depth	2.76 in	[70.1 mm]
Weight	1.15 lbs	[521.63 g]
Housing Material and Plating	PA66 CT1; V-0	

Environmental Specifications

Temperature Range (Operational)	-40 to +85 deg C
Temperature Range (Storage)	-40 to +85 deg C
Environmental Protection Rating	IP 20
Humidity	95% non-condensing

Installation

Mount Type	DIN Rail
Service Wiring Terminal	Compression Lug #4 to #14 AWG
Status Indication Terminal	3-Position Screw Terminal #16 to #22 AWG

Click the following link (or enter part number in "SEARCH" on website) to obtain additional part information including price, inventory and certifications:
[AC Surge Protector SPD I2R-75K DIN-Rail 347/600 Vac 3-Phase Wye + CM MOV 75 kA, UL 1449 4th Ed. Type 1 and Type 2, TAA I2R-75KYG600](#)

AC Surge Protector SPD I2R-75K DIN-Rail 347/600 Vac 3-Phase
Wye + CM MOV 75 kA, UL 1449 4th Ed. Type 1 and Type 2, TAA



I2R-75KYG600

Compliance Certifications

UL Compliant	Yes
TAA Compliant Certifications	Yes UL 1449 4th Ed. Type 1 and Type 2

Transtector Systems specializes in protection of highly sensitive, low voltage equipment through its patented, non-degrading silicon diode technology and custom filters. Our power quality expertise translates into a diverse product offering including AC, DC, and signal applications as well as integrated cabinets, power distribution panels and EMP hardened devices.

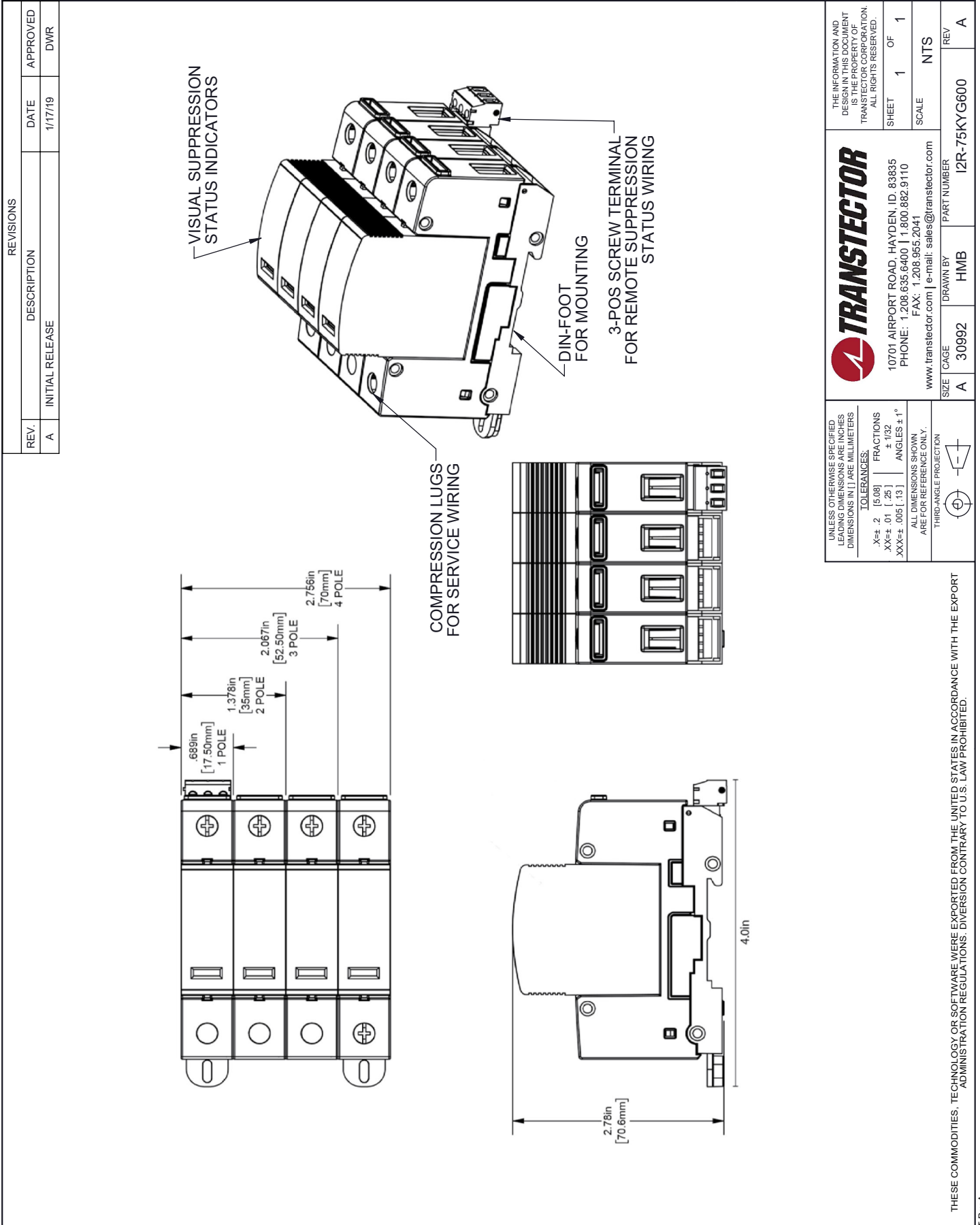
Click the following link (or enter part number in "SEARCH" on website) to obtain additional part information including price, inventory and certifications: [AC Surge Protector SPD I2R-75K DIN-Rail 347/600 Vac 3-Phase Wye + CM MOV 75 kA, UL 1449 4th Ed. Type 1 and Type 2, TAA I2R-75KYG600](#)

URL: <https://www.transtector.com/ac-surge-protector-spd-i2r-75k-din-i2r-75kyg600-p.aspx>

The information contained in this document is accurate to the best of our knowledge and representative of the part described herein. It may be necessary to make modifications to the part and/or the documentation of the part, in order to implement improvements. Transtector reserves the right to make such changes as required. Unless otherwise stated, all specifications are nominal. Transtector does not make any representation or warranty regarding the suitability of the part described herein for any particular purpose, and Transtector does not assume any liability arising out of the use of any part or documentation.

AC Surge Protector SPD I2R-75K DIN-Rail 347/600 Vac 3-Phase Wye +
CM MOV 75 kA, UL 1449 4th Ed. Type 1 and Type 2, TAA

I2R-75KYG600 CAD Drawing



THESE COMMODITIES, TECHNOLOGY OR SOFTWARE WERE EXPORTED FROM THE UNITED STATES IN ACCORDANCE WITH THE EXPORT ADMINISTRATION REGULATIONS. DIVERSION CONTRARY TO U.S. LAW PROHIBITED.

T-Rev A