

## AC Surge Protector SPD I2R-75K DIN-Rail 127/220 Vac 3-Phase Wye MOV 75 kA, UL 1449 4th Ed. Type 1 and Type 2, TAA

### I2R-75KY220



#### Features

- UL1449 4th Ed. Type 1/Type 2
- High Capacity MOV Protection
- Visual Suppression Status Indicator
- Dry Contact Remote Annunciation Terminals
- Replaceable Module I2R-75KR120
- Wire and Comb Busbar Wiring Terminals
- Reversible Chassis for Top or Bottom Wiring
- DIN-Rail Mount
- No External Backup Fuses Required

#### Applications

- Electrical Panelboards
- Industrial Automation
- Communications Base Stations
- IT & Data Centers
- Switchgear
- Motor Control Centers
- Automatic Transfer Switches
- Wastewater Treatment
- Oil & Gas
- LED Lighting
- Schools
- Hospitals
- Small Cells
- Intelligent Traffic Systems

#### Description

AC surge protector (also known as SPD or lightning protector) I2R-75KY220 from Transtector is a UL1449 4th Ed. Type 1/Type 2 DIN-Rail style SPD that utilizes state of the art MOV technology to protect critical equipment that operates on a 127/220 Vac 3-Phase Wye electrical service. This surge protector provides effective protection against electrical transient surges that are generated both by external lightning events and by internal switching events and supports long-term system reliability by safely shunting high amounts of transient energy while maintaining a very low clamping voltage. Transtector AC surge protectors are available in stock with same day shipping.

#### Electrical Specifications

| Description                                 | Minimum | Typical     | Maximum | Units |
|---|---------|-------------|---------|-------|
| Service Voltages                            |         | 127/220     |         | Vac   |
| Service Type                                |         | 3-Phase Wye |         |       |
| Frequency                                   | 50      |             | 60      | Hz    |
| Maximum Continuous Operating Voltage (MCOV) |         |             |         |       |
| L - L                                       |         |             | 350     | Vac   |
| L - N                                       |         |             | 175     | Vac   |

#### Surge Protection Specification

| Description | Minimum | Typical | Maximum | Units |
|-------------|---------|---------|---------|-------|
|-------------|---------|---------|---------|-------|

Click the following link (or enter part number in "SEARCH" on website) to obtain additional part information including price, inventory and certifications:  
[AC Surge Protector SPD I2R-75K DIN-Rail 127/220 Vac 3-Phase Wye MOV 75 kA, UL 1449 4th Ed. Type 1 and Type 2, TAA I2R-75KY220](#)

AC Surge Protector SPD I2R-75K DIN-Rail 127/220 Vac 3-Phase  
 Wye MOV 75 kA, UL 1449 4th Ed. Type 1 and Type 2, TAA



## I2R-75KY220

|                                       |          |       |      |
|---------------------------------------|----------|-------|------|
| Surge Protection Technology           | MOV      |       |      |
| Protection Modes                      | L-N, L-L |       |      |
| 8/20 $\mu$ s Surge Current            |          | 75    | kA   |
| Nominal Discharge Current Rating (In) | 20       |       | kA   |
| VPR 8/20 $\mu$ s                      |          |       |      |
| L - L                                 |          | 1,200 | Vpk  |
| L - N                                 |          | 600   | Vpk  |
| Response Time                         |          | 25    | ns   |
| SCCR (Short Circuit Current Rating)   | 200      |       | kAIC |

### Mechanical Specifications

#### Size

|                              |               |            |
|------------------------------|---------------|------------|
| Height                       | 2.76 in       | [70.1 mm]  |
| Width                        | 4 in          | [101.6 mm] |
| Depth                        | 2.07 in       | [52.58 mm] |
| Weight                       | 1 lbs         | [453.59 g] |
| Housing Material and Plating | PA66 CT1; V-0 |            |

### Environmental Specifications

|                                 |                    |
|---------------------------------|--------------------|
| Temperature Range (Operational) | -40 to +85 deg C   |
| Temperature Range (Storage)     | -40 to +85 deg C   |
| Environmental Protection Rating | IP 20              |
| Humidity                        | 95% non-condensing |

### Installation

|                            |  |
|----------------------------|--|
| Mount Type                 | DIN Rail                                 |
| Service Wiring Terminal    | Compression Lug #4 to #14 AWG            |
| Status Indication Terminal | 3-Position Screw Terminal #16 to #22 AWG |

### Compliance Certifications

|                |                                   |
|----------------|-----------------------------------|
| UL Compliant   | Yes                               |
| TAA Compliant  | Yes                               |
| Certifications | UL 1449 4th Ed. Type 1 and Type 2 |

Click the following link (or enter part number in "SEARCH" on website) to obtain additional part information including price, inventory and certifications:  
[AC Surge Protector SPD I2R-75K DIN-Rail 127/220 Vac 3-Phase Wye MOV 75 kA, UL 1449 4th Ed. Type 1 and Type 2, TAA I2R-75KY220](#)

AC Surge Protector SPD I2R-75K DIN-Rail 127/220 Vac 3-Phase  
Wye MOV 75 kA, UL 1449 4th Ed. Type 1 and Type 2, TAA

## I2R-75KY220



Transtector Systems specializes in protection of highly sensitive, low voltage equipment through its patented, non-degrading silicon diode technology and custom filters. Our power quality expertise translates into a diverse product offering including AC, DC, and signal applications as well as integrated cabinets, power distribution panels and EMP hardened devices.

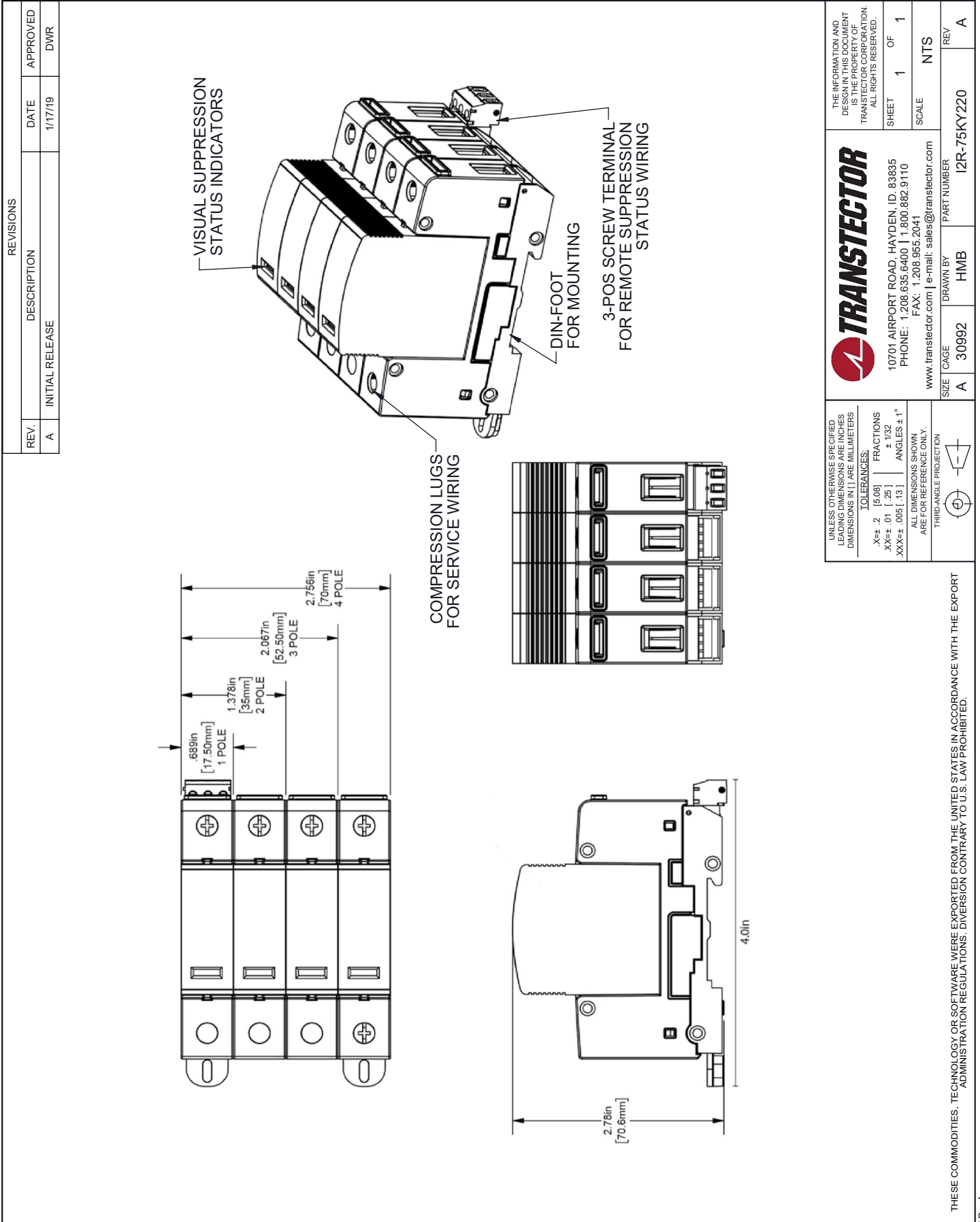
Click the following link (or enter part number in "SEARCH" on website) to obtain additional part information including price, inventory and certifications: [AC Surge Protector SPD I2R-75K DIN-Rail 127/220 Vac 3-Phase Wye MOV 75 kA, UL 1449 4th Ed. Type 1 and Type 2, TAA I2R-75KY220](#)

URL: <https://www.transtector.com/ac-surge-protector-spd-i2r-75k-din-i2r-75ky220-p.aspx>

The information contained in this document is accurate to the best of our knowledge and representative of the part described herein. It may be necessary to make modifications to the part and/or the documentation of the part, in order to implement improvements. Transtector reserves the right to make such changes as required. Unless otherwise stated, all specifications are nominal. Transtector does not make any representation or warranty regarding the suitability of the part described herein for any particular purpose, and Transtector does not assume any liability arising out of the use of any part or documentation.

AC Surge Protector SPD I2R-75K DIN-Rail 127/220 Vac 3-Phase Wye  
MOV 75 kA, UL 1449 4th Ed. Type 1 and Type 2, TAA

I2R-75KY220 CAD Drawing



**TRANSTECTOR**

10701 AIRPORT ROAD, HAYDEN, ID. 83835  
PHONE: 1.208.635.6400 | 1.800.882.9110  
FAX: 1.208.955.2041  
www.transvector.com | e-mail: sales@transvector.com

THE INFORMATION AND DESIGN IN THIS DOCUMENT IS THE PROPERTY OF TRANSTECTOR CORPORATION. ALL RIGHTS RESERVED.

SHEET 1 OF 1  
SCALE NTS

SIZE CAGE A 30992  
DRAWN BY HMB  
PART NUMBER I2R-75KY220  
REV A

THESE COMMODITIES, TECHNOLOGY OR SOFTWARE WERE EXPORTED FROM THE UNITED STATES IN ACCORDANCE WITH THE EXPORT ADMINISTRATION REGULATIONS. DIVERSION CONTRARY TO U.S. LAW PROHIBITED.