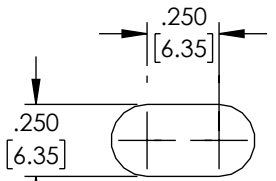
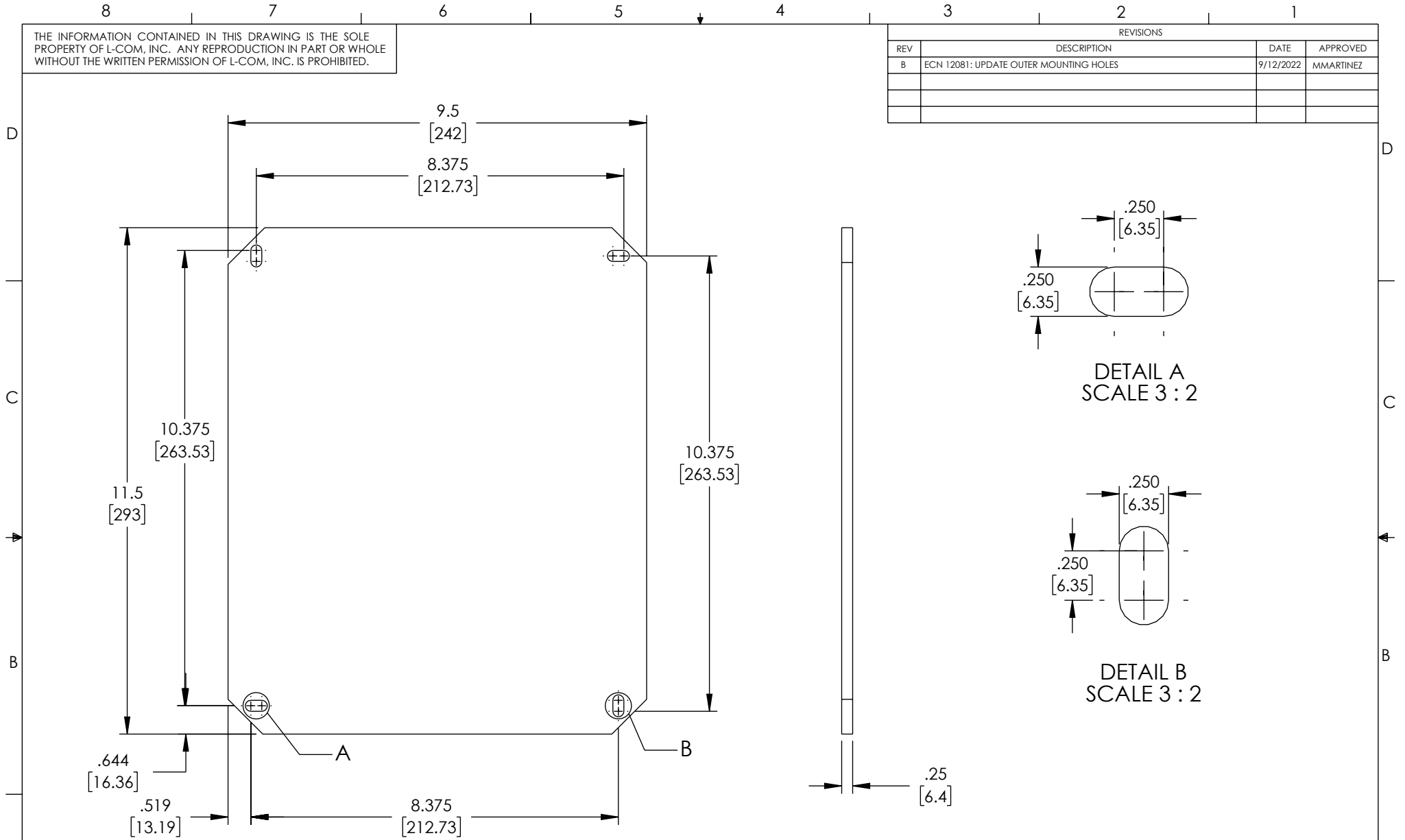
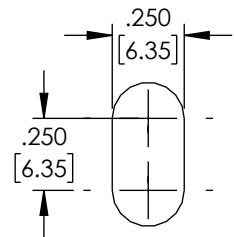


THE INFORMATION CONTAINED IN THIS DRAWING IS THE SOLE PROPERTY OF L-COM, INC. ANY REPRODUCTION IN PART OR WHOLE WITHOUT THE WRITTEN PERMISSION OF L-COM, INC. IS PROHIBITED.

REVISIONS			
REV	DESCRIPTION	DATE	APPROVED
B	ECN 12081: UPDATE OUTER MOUNTING HOLES	9/12/2022	MMARTINEZ



DETAIL A  
SCALE 3 : 2


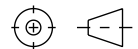


DETAIL B  
SCALE 3 : 2

NOTE:

1. MATERIAL: 1/4" [6.35] STARBOARD POLYPROPYLENE
2. COLOR: LIGHT GRAY
3. ALL DIMENSIONS FOR REFERENCE ONLY

REGULATORY COMPLIANCE:  
EU RoHS DIRECTIVE (MOST RECENT RELEASED VERSION)

UNLESS OTHERWISE SPECIFIED, DIMENSIONS ARE IN INCHES [mm]  OVERALL CABLE LENGTH TOLERANCE: ≤12 [305] = +1 [25] / -0 >12 [305] ≤60 [1524] = +2 [51] / -0 >60 [1524] ≤120 [3048] = +4 [102] / -0 >120 [3048] ≤300 [7620] = +6 [152] / -0 >300 [7620] = +5% / -0  ALL OTHER DIMENSIONAL TOLERANCES: .X = ± .2 [5]   FRACTIONS ± 1/32 .XX = ± .02 [5]   ANGLES ± 1° .XXX = ± .005 [1.3]	APPROVALS DRAWN BY BPUCHASKI CHECKED BY DFRISIELLO APPROVED BY MMARTINEZ	DATE 08/25/2021 08/25/2021 08/25/2021	 an INFINITI® brand 50 High Street, West Mill, North Andover, MA 01845 USA. Phone: 1.800.341.5266 1.978.682.6936	
	THIRD-ANGLE PROJECTION 		CATEGORY <b>ENCLOSURE</b>	PRODUCT DESCRIPTION <b>MNT PLATE BLNK PLASTIC 12" POLYCARB ENCLOSURES</b>
CONFIGURATION DETAILS OF UNDIMENSIONED FEATURES MAY VARY  COLOR VARIATIONS MAY OCCUR	SIZE <b>A</b>	CAGE CODE <b>43321</b>	ITEM NO. <b>HGX-NPLATE40</b>	REV. <b>B</b>
SCALE: NONE		CAD FILE: HGX-NPLATE40.SLDDRW		SHEET 1 OF 1