



Equipotential Bonding Bar, 6 Position

Data Surge Protection Device Technical Data Sheet

GSBB-06-LC

Features

- Provides bonding connection means for building or site grounding systems
- Maintains equipotential condition for physical grounding structure
- Enhances system shielding effectiveness against lightning and EMP

Applications

- Building grounding systems
- Tower grounding systems
- Laboratory testing

Description

Equipotential bonding bar GSBB-06-LC from L-com provides a simple means to properly all building grounding system elements together to remain at the same potential. L-com RF surge protector products are available in stock with same day shipping.

Electrical Specifications

Description	Minimum	Typical	Maximum	Units
Connectors		Screw Terminal		

Mechanical Specifications

Size

Height	1.97 in	[50.04 mm]
Width	2.36 in	[59.94 mm]
Depth	5.91 in	[150.11 mm]
Weight	0.5 lbs	[226.8 g]

Environmental Specifications

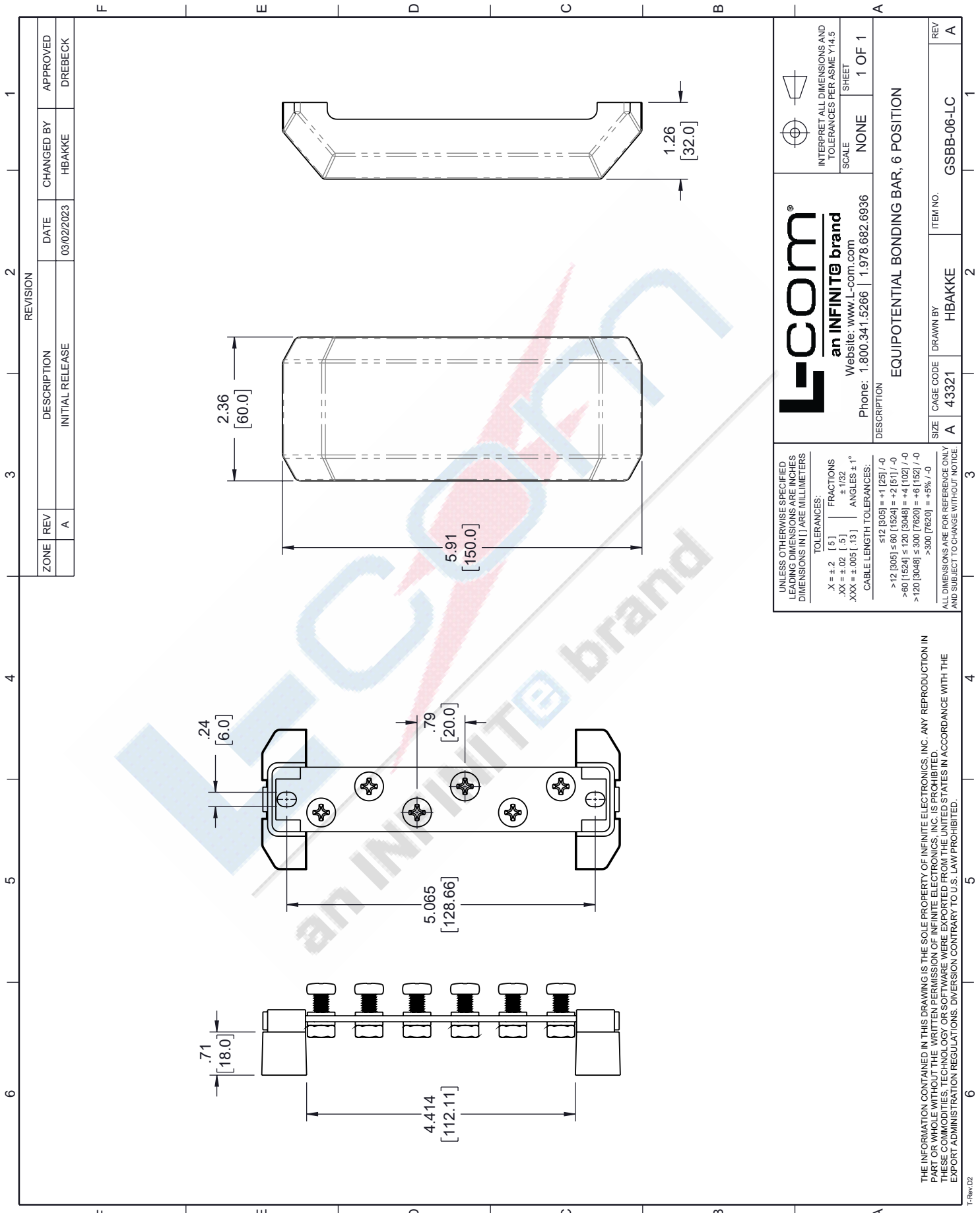
Operating Temperature	-40 to +80 deg C
Mount Type	Panel Mount

Our portfolio includes coaxial cable assemblies, connectors, adapters and custom products as well as lightning and surge protectors, NEMA rated enclosures, and an RF product line which includes antennas, amplifiers, passive, and active components.

The information contained in this document is accurate to the best of our knowledge and representative of the part described herein. It may be necessary to make modifications to the part and/or the documentation of the part, in order to implement improvements. L-com reserves the right to make such changes as required. Unless otherwise stated, all specifications are nominal. L-com does not make any representation or warranty regarding the suitability of the part described herein for any particular purpose, and L-com does not assume any liability arising out of the use of any part or documentation.

GSBB-06-LC CAD Drawing

Equipotential Bonding Bar, 6 Position



ZONE		REV	DESCRIPTION	DATE	CHANGED BY	APPROVED
		A	INITIAL RELEASE	03/02/2023	HBAKKE	DREBECK

REVISION	
3	
2	
1	

<p>L-com an INFINITE brand Website: www.L-com.com Phone: 1.800.341.5266 1.978.682.6936</p>		<p>INTERPRET ALL DIMENSIONS AND TOLERANCES PER ASME Y14.5 SCALE NONE SHEET 1 OF 1</p>	
<p>DESCRIPTION: EQUIPOTENTIAL BONDING BAR, 6 POSITION</p>			
SIZE	CAGE CODE	DRAWN BY	ITEM NO.
A	43321	HBAKKE	GSBB-06-LC
REV			A

UNLESS OTHERWISE SPECIFIED LEADING DIMENSIONS ARE INCHES DIMENSIONS IN [] ARE MILLIMETERS

TOLERANCES:

.X = ±.2	[.5]	FRACTIONS
.XX = ±.02	[.5]	± 1/32
.XXX = ±.005	[.13]	ANGLES ± 1°

CABLE LENGTH TOLERANCES:

< 12 [305]	±.125	/ -0
> 12 [305]	±.00	[.1524] = ±.015
> 60 [1524]	±.00	[.3048] = ±.010
> 120 [3048]	±.00	[.6096] = ±.020
> 300 [7620]	±.00	[.7620] = ±.030

ALL DIMENSIONS ARE FOR REFERENCE ONLY AND SUBJECT TO CHANGE WITHOUT NOTICE.

THE INFORMATION CONTAINED IN THIS DRAWING IS THE SOLE PROPERTY OF INFINITE ELECTRONICS, INC. ANY REPRODUCTION IN WHOLE OR IN PART WITHOUT THE WRITTEN PERMISSION OF INFINITE ELECTRONICS, INC. IS PROHIBITED. THESE COMMENTS APPLY TO ANY SOFTWARE, HARDWARE, OR SERVICES PROVIDED BY INFINITE ELECTRONICS, INC. EXPORT ADMINISTRATION REGULATIONS, DIVERSION CONTRARY TO U.S. LAW PROHIBITED.

T-Rev D2