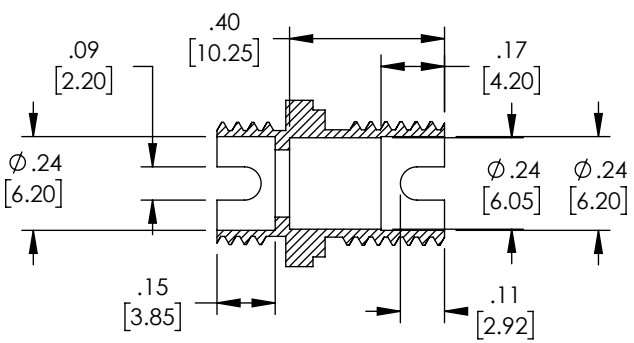
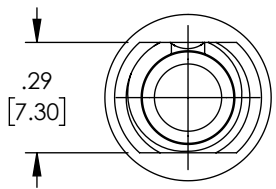
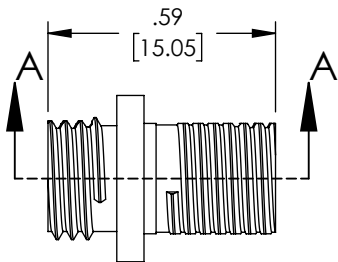
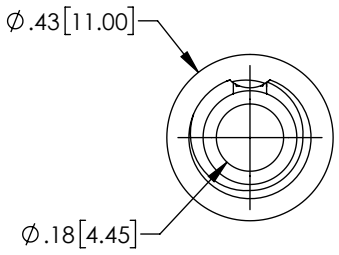
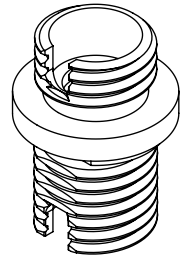
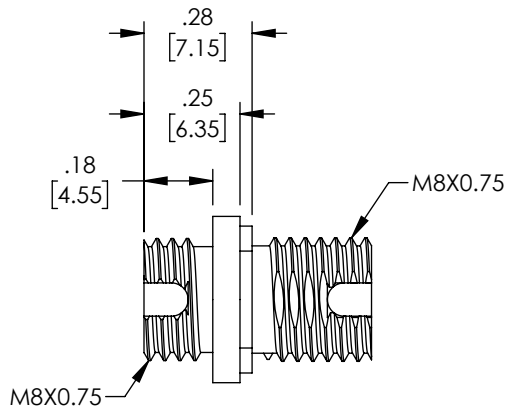


THE INFORMATION CONTAINED IN THIS DRAWING IS THE SOLE PROPERTY OF L-COM, INC. ANY REPRODUCTION IN PART OR WHOLE WITHOUT THE WRITTEN PERMISSION OF L-COM, INC. IS PROHIBITED.

REVISIONS			
REV	DESCRIPTION	DATE	APPROVED
A	INITIAL RELEASE	8/20/21	PHOSPODAR



SECTION A-A

UNLESS OTHERWISE SPECIFIED, DIMENSIONS ARE IN INCHES [mm]

OVERALL CABLE LENGTH TOLERANCE:
 $\leq 12 [305] = +1 [25] / -0$
 $> 12 [305] \leq 60 [1524] = +2 [51] / -0$
 $> 60 [1524] \leq 120 [3048] = +4 [102] / -0$
 $> 120 [3048] \leq 300 [7620] = +6 [152] / -0$
 $> 300 [7620] = +5\% / -0$

ALL OTHER DIMENSIONAL TOLERANCES:
.X = $\pm .2 [5]$ | FRACTIONS $\pm 1/32$
.XX = $\pm .02 [5]$ | ANGLES $\pm 1^\circ$
.XXX = $\pm .005 [1.3]$

THIRD-ANGLE PROJECTION

APPROVALS	DATE
DRAWN BY DMAY	8/10/21
CHECKED BY PHOSPODAR	8/20/21
APPROVED BY PHOSPODAR	8/20/21

L-com
an INFINITO brand

50 High Street, West Mill,
North Andover, MA 01845 USA.
Phone: 1.800.341.5266
1.978.682.6936

CATEGORY: FIBER OPTIC

PRODUCT DESCRIPTION: FIBER OPTIC ECONOMY COUPLER, FC, SIMPLEX SMF/MMF, COPPER BODY, CERAMIC SLEEVE

SIZE A	CAGE CODE 43321	ITEM NO. FOA-FCAM1-MCOD-SMH	REV. A
SCALE: NONE		CAD FILE: FOA-FCAM1-MCOD-SMH.SLDDRW	SHEET 1 OF 1

REGULATORY COMPLIANCE:
EU RoHS DIRECTIVE (MOST RECENT RELEASED VERSION)