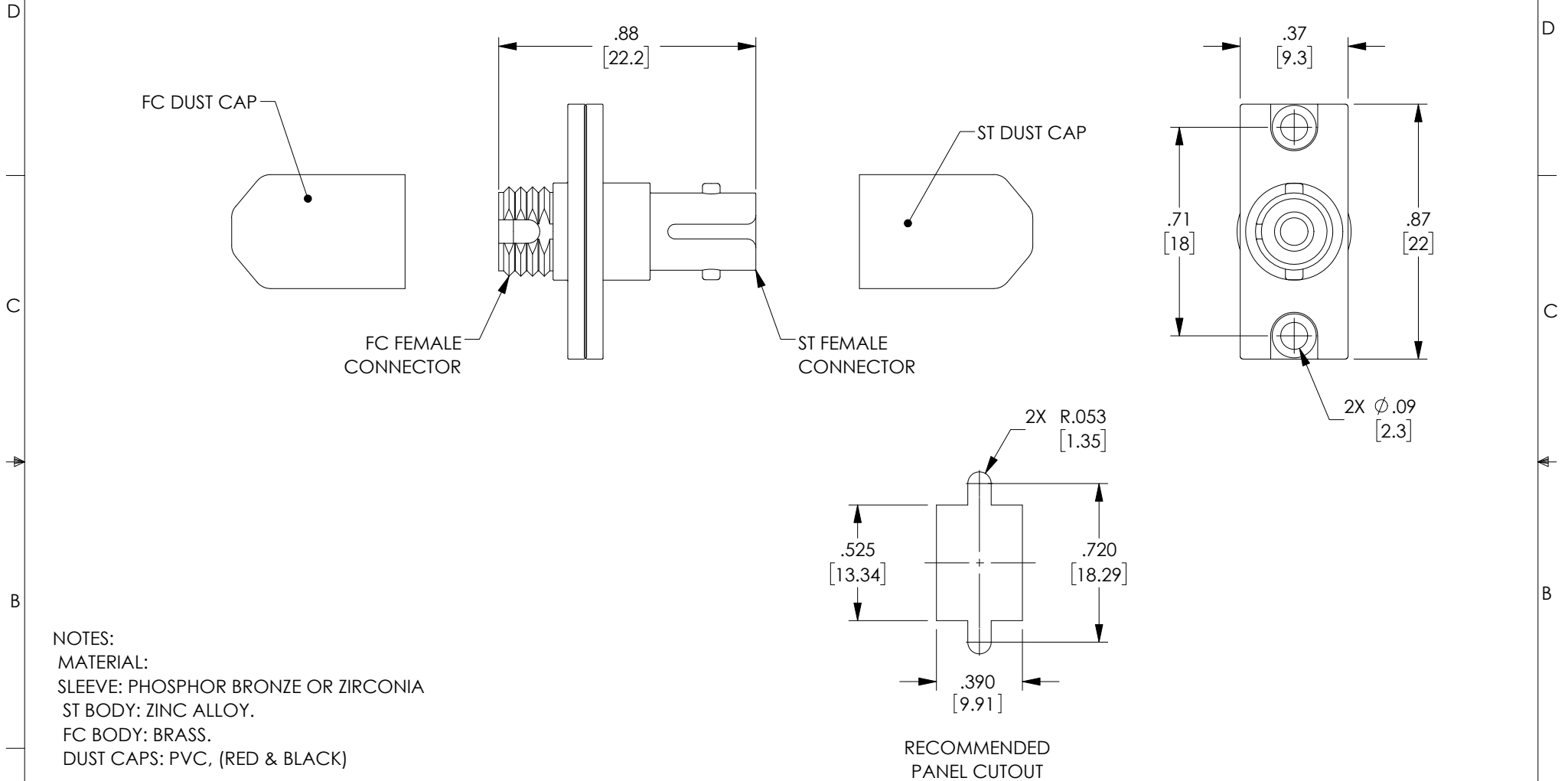


THE INFORMATION CONTAINED IN THIS DRAWING IS THE SOLE PROPERTY OF L-COM, INC. ANY REPRODUCTION IN PART OR WHOLE WITHOUT THE WRITTEN PERMISSION OF L-COM, INC. IS PROHIBITED.

REVISIONS			
REV	DESCRIPTION	DATE	APPROVED
A	INITIAL RELEASE	08/10/2020	PHOSPODAR




NOTES:
 MATERIAL:
 SLEEVE: PHOSPHOR BRONZE OR ZIRCONIA
 ST BODY: ZINC ALLOY.
 FC BODY: BRASS.
 DUST CAPS: PVC, (RED & BLACK)

FINISH:
 ST BODY: NICKEL PLATED.
 FC BODY: NICKEL PLATED.

MISCELLANEOUS:
 ALL DIMENSIONS ARE FOR REFERENCE ONLY.
 SHIPPED WITH DUST CAPS INSTALLED.
 COMPONENT SHALL BE INDIVIDUALLY PACKAGE
 IN ACCORDANCE WITH L-COM SPEC. PS-0031.

RECOMMENDED
 PANEL CUTOUT

UNLESS OTHERWISE SPECIFIED, DIMENSIONS ARE IN INCHES [mm] OVERALL CABLE LENGTH TOLERANCE: ≤12 [305] = +1 [25] / -0 >12 [305] ≤60 [1524] = +2 [51] / -0 >60 [1524] ≤120 [3048] = +4 [102] / -0 >120 [3048] ≤300 [7620] = +6 [152] / -0 >300 [7620] = +5% / -0 ALL OTHER DIMENSIONAL TOLERANCES: .X = ± .2 [5] FRACTIONS ± 1/32 .XX = ± .02 [.5] ANGLES ± 1° .XXX = ± .005 [.13]	APPROVALS	DATE	 50 High Street, West Mill, North Andover, MA 01845 USA. Phone: 1.800.341.5266 1.978.682.6936	
	DRAWN BY DFRISIELLO	07/10/2020		
	CHECKED BY PHOSPODAR	08/10/2020	CATEGORY	FIBER OPTICS
	APPROVED BY PHOSPODAR	08/10/2020	PRODUCT DESCRIPTION	SC Female to FC Female for SMF and MMF
THIRD-ANGLE PROJECTION	CONFIGURATION DETAILS OF UNDIMENSIONED FEATURES MAY VARY	COLOR VARIATIONS MAY OCCUR	SIZE A CAGE CODE 43321 ITEM NO. FOA-AM-SCFFCF REV. A SCALE: NONE CAD FILE: FOA-AM-SCFFCF.SLDRW SHEET 1 OF 1	