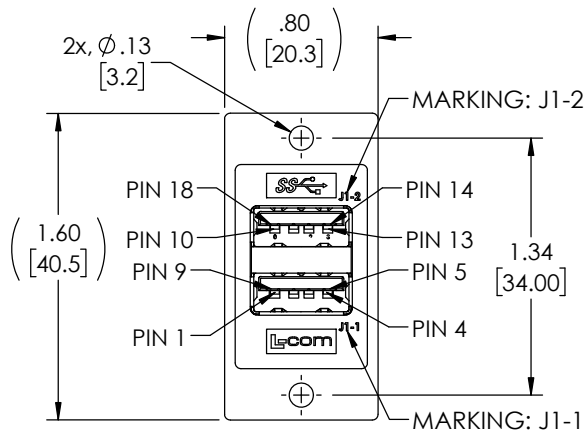


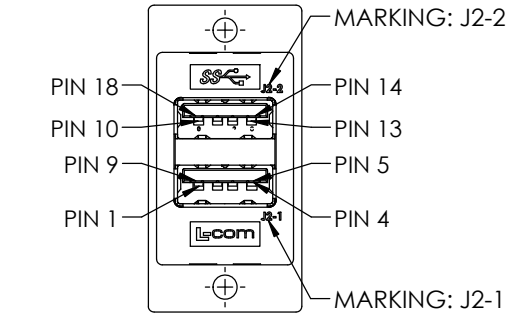
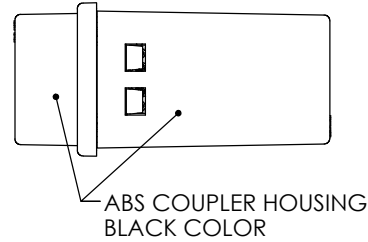
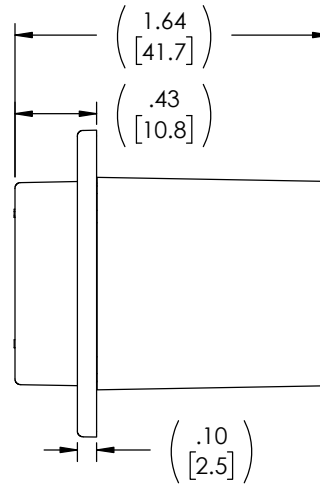
THE INFORMATION CONTAINED IN THIS DRAWING IS THE SOLE PROPERTY OF L-COM, INC. ANY REPRODUCTION IN PART OR WHOLE WITHOUT THE WRITTEN PERMISSION OF L-COM, INC. IS PROHIBITED.

REVISION					
ZONE	REV	DESCRIPTION	DATE	CHANGED BY	APPROVED
	A	INITIAL RELEASE	08/22/2023	BZHANG	GUTTADAURO

D



"J1"  
DOUBLE STACKED USB 3.0 TYPE "A"  
FEMALE CONNECTOR  
30U" GOLD PLATED CONTACTS  
NICKEL PLATED SHELL

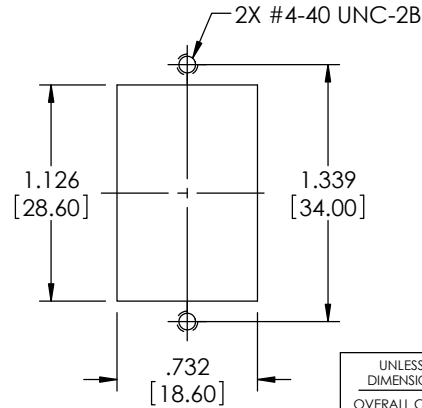


"J2"  
DOUBLE STACKED USB 3.0 TYPE "A"  
FEMALE CONNECTOR  
30U" GOLD PLATED CONTACTS  
NICKEL PLATED SHELL

C

C

"J1"	WIRING MAP	"J2"
1	_____	1
2	_____	2
3	_____	3
4	_____	4
5	_____	8
6	_____	9
7	_____	7
8	_____	5
9	_____	6
10	_____	10
11	_____	11
12	_____	12
13	_____	13
14	_____	17
15	_____	18
16	_____	16
17	_____	14
18	_____	15
SHELL	_____	SHELL



RECOMMENDED  
PANEL CUTOUT

**NOTES:**

- RATING:**  
CURRENT: 1.8A (P1,P4,P10, P13 CONTACTS);  
0.25A(REMAINING CONTACTS)  
OPERATING TEMPERATURE: -10°C TO +70°C.
- COUPLER SHALL BE TESTED FOR CONTINUITY.
- COUPLER SHALL BE INDIVIDUALLY PACKAGED IN ACCORDANCE WITH L-COM PACKAGING SPEC PS-0031.

A

A

UNLESS OTHERWISE SPECIFIED, DIMENSIONS ARE IN INCHES [mm]  OVERALL CABLE LENGTH TOLERANCE: ≤12 [305] = +1 [25] / -0 >12 [305] ≤60 [1524] = +2 [51] / -0 >60 [1524] ≤120 [3048] = +4 [102] / -0 >120 [3048] ≤300 [7620] = +6 [152] / -0 >300 [7620] = +5% / -0  ALL OTHER DIMENSIONAL TOLERANCES: .X = ± .2 [5]   FRACTIONS ± 1/32 .XX = ± .02 [5]   ANGLES ± 1° .XXX = ± .005 [13]	APPROVALS DRAWN BY B.ZHANG CHECKED BY GUTTADAURO APPROVED BY GUTTADAURO	DATE 01/21/2022 01/21/2022 01/21/2022	 an INFINIT® brand	50 High Street, West Mill, North Andover, MA 01845 USA. Phone: 1.800.341.5266 1.978.682.6936	
	CONFIGURATION DETAILS OF UNDIMENSIONED FEATURES MAY VARY  COLOR VARIATIONS MAY OCCUR	CATEGORY  PRODUCT DESCRIPTION <b>USB</b>  <b>ECF DOUBLE STACK CPLR, USB 3.0 AF-AF, BLK</b>	SIZE <b>A</b>	CAGE CODE <b>43321</b>	DWG. NO. <b>ECF504-3DSAA-BLK</b>
THIRD-ANGLE PROJECTION 		SCALE: NONE   CAD FILE: ECF504-3DSAA-BLK.SLDDRW		SHEET 1 OF 1	