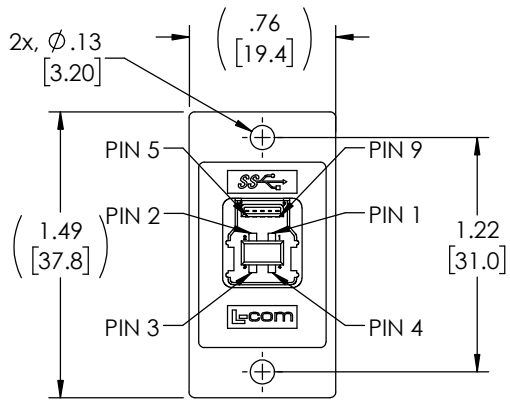
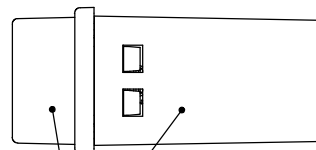
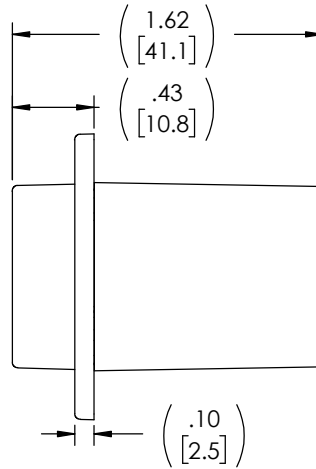


THE INFORMATION CONTAINED IN THIS DRAWING IS THE SOLE PROPERTY OF L-COM, INC. ANY REPRODUCTION IN PART OR WHOLE WITHOUT THE WRITTEN PERMISSION OF L-COM, INC. IS PROHIBITED.

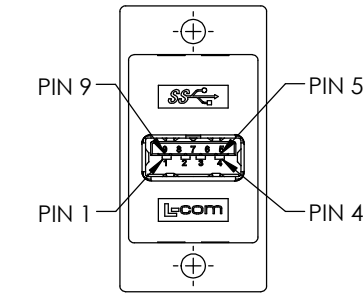
REVISIONS			
REV	DESCRIPTION	DATE	APPROVED
A	INITIAL RELEASE	11/23/2020	D.GUTTADAURO



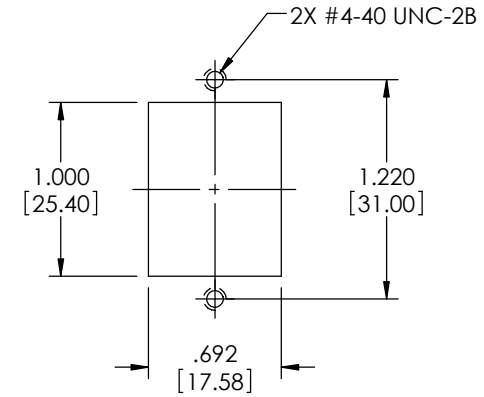
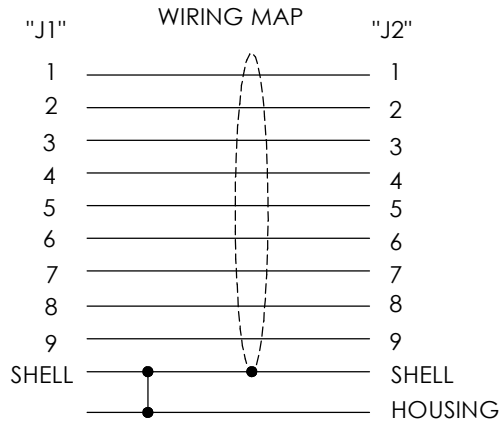
"J1"  
USB 3.0 TYPE "B"  
FEMALE CONNECTOR  
30u" GOLD PLATED CONTACTS  
NICKEL PLATED SHELL



ABS COUPLER SHIELDED HOUSING,  
FINISH: CHROME




"J2"  
USB 3.0 TYPE "A"  
FEMALE CONNECTOR  
30u" GOLD PLATED CONTACTS  
NICKEL PLATED SHELL



RECOMMENDED  
PANEL CUTOUT

**NOTES:**

- RATING:**  
CURRENT: 1.8A (P1 & P4 CONTACTS); 0.25A(OTHER CONTACTS)  
VOLTAGE: 30V max.  
OPERATING TEMPERATURE: -10°C TO +70°C.
- COUPLER SHALL BE TESTED FOR CONTINUITY.
- COUPLER SHALL BE INDIVIDUALLY PACKAGED IN ACCORDANCE WITH L-COM PACKAGING SPEC PS-0031.

UNLESS OTHERWISE SPECIFIED, DIMENSIONS ARE IN INCHES [mm] OVERALL CABLE LENGTH TOLERANCE: ≤12 [305] = +1 [25] / -0 >12 [305] ≤60 [1524] = +2 [51] / -0 >60 [1524] ≤120 [3048] = +4 [102] / -0 >120 [3048] ≤300 [7620] = +6 [152] / -0 >300 [7620] = +5% / -0 ALL OTHER DIMENSIONAL TOLERANCES: .X = ± .2 [5]      FRACTIONS .XX = ± .02 [5]    ± 1/32 .XXX = ± .005 [13]    ANGLES ± 1°	APPROVALS	DATE	 50 High Street, West Mill, North Andover, MA 01845 USA. Phone: 1.800.341.5266 1.978.682.6936
	DRAWN BY B.ZHANG	08/19/2020	
	CHECKED BY D.CONTROL	08/19/2020	PRODUCT DESCRIPTION <b>USB3.0 COUPLER PNL MNT BF-AF SHIELDED</b>
	APPROVED BY D.GUTTADAURO	08/19/2020	

