



an INFINIT® brand

# 18x16x10 Polycarbonate Weatherproof Outdoor IP24 NEMA 3R Enclosure 120VAC Mount Plate Mechanical Thermostat Heat & 85F Turn on Fan Dark Gray



## NEMA Enclosures Technical Data Sheet

NBPC181610-1HF-1

### Features

- High-Impact, UV Resistant Polycarbonate (Dark Gray)
- Stainless steel latches with padlock eye
- NEMA Type 3R / IP24 rated
- Fully gasketed vented lid with filters & user installed wall mounting brackets
- Features aluminum mounting plate with surge protected duplex 120 VAC outlets & thermostat controlled heating & cooling system

### Applications

- Remote Wireless LAN WiFi equipment installations
- Indoor and outdoor installations
- Rapid Deployment Installations
- Corrosive environments & hotspot applications
- Protection of equipment from theft or damage

### Description

The box is a rugged weatherproof enclosure that is ideal for both indoor and outdoor applications. Constructed from High-Impact, UV Resistant Polycarbonate material that provides superior durability to impacts and ease of modification while maintaining minimum weight. It is well suited for high temperature or corrosive environments. The lid includes two vents with installed rain guards and filters. The included wall mount brackets come uninstalled and bagged with their hardware inside of the enclosure. Once the brackets are installed the enclosure can be mounted directly to any flat wall surface provided proper screws are used into secure studs. The brackets, once installed, also allow you to use our HGX-PMT pole mount kits. The lid features a non-metallic hinge system that allows for quick removal & can be reattached just as quickly without the need for any tools. The enclosure comes with a pair of stainless-steel latches with padlock eyes allowing you to secure the enclosure from tampering. The enclosure comes in a Dark Gray (Pantone 422C)

#### Mounting Plate

The aluminum mounting plate included with the NBPC181610-1HF-1 features standard surge protected duplex 120 VAC outlets and a terminal block for easy hook up to externally provided line power. The enclosure also features holes for two N-Bulkhead lightning protectors or connectors, a grounding lug and cable conduit connector.

#### Heating & Cooling

To help ensure trouble-free operation of electronic equipment, proper operating temperatures inside an enclosure needs to be controlled. With the built-in heaters & dual cooling fans, internal temperatures can be better maintained. This model is ideal in hot and/or cold environments.

For Heating the NBPC181610-1HF-1 includes two thermostat-controlled 200W (400W total) heaters. Each 200W heater is controlled by its own thermostat. The heaters turn on when the internal temperature drops to 40° F (4° C)  $\pm 7^\circ$  and turn off at 60° F (15° C)  $\pm 5^\circ$ . The heaters do not require the use of any of the AC outlets, leaving them all available for your equipment. No extra room for the heaters is required since they are mounted underneath the plate.

For Cooling the NBPC181610-1HF-1 model includes two thermostat-controlled 16.4W (32.8W total) fans. The high airflow, low noise fans used allow warm air to be actively pushed out the top vent while the second fan on the lower vent actively pulls in outside air into the enclosure. Filters for both ports prevent foreign objects or debris from entering the enclosure. The fans turn on when the internal temperature rises to 85° F (29° C)  $\pm 5^\circ$  and turn off at 67° F (19° C)  $\pm 10^\circ$ . Like the heaters, the cooling fans do not require the use of any of the AC outlets, leaving them all available for your equipment.

The HGX-PMT series of pole mounting kits allow the populated enclosure to be securely mounted to a variety of different size poles.

Compatible versions include HGX-PMT13, HGX-PMT16, HGX-PMT28, HGX-PMT29, HGX-PMT30 & HGX-PMT33

Click the following link (or enter part number in "SEARCH" on website) to obtain additional part information including price, inventory and certifications: [18x16x10 Polycarbonate Weatherproof Outdoor IP24 NEMA 3R Enclosure 120VAC Mount Plate Mechanical Thermostat Heat & 85F Turn on Fan Dark Gray NBPC181610-1HF-1](#)



an INFINITE® brand

18x16x10 Polycarbonate Weatherproof Outdoor  
IP24 NEMA 3R Enclosure 120VAC Mount Plate Mechanical  
Thermostat Heat & 85F Turn on Fan Dark Gray



## NEMA Enclosures Technical Data Sheet

NBPC181610-1HF-1

### Size

Outer Height	18.9 in	[480.06 mm]
Outer Width	16.8 in	[426.72 mm]
Outer Depth	11.3 in	[287.02 mm]
Inner Height	18.2 in	[462.28 mm]
Inner Width	16.2 in	[411.48 mm]
Inner Depth	9.7 in	[246.38 mm]
Weight	19 lbs	[8.62 kg]
Enclosure Material	Polycarbonate	

### Environmental Specifications

Temperature Rating	-40° to 265° F [-40° to 129° C]
NEMA Rating	3R
Ingress Protection (IP) Rating	IP24

### Compliance Certifications

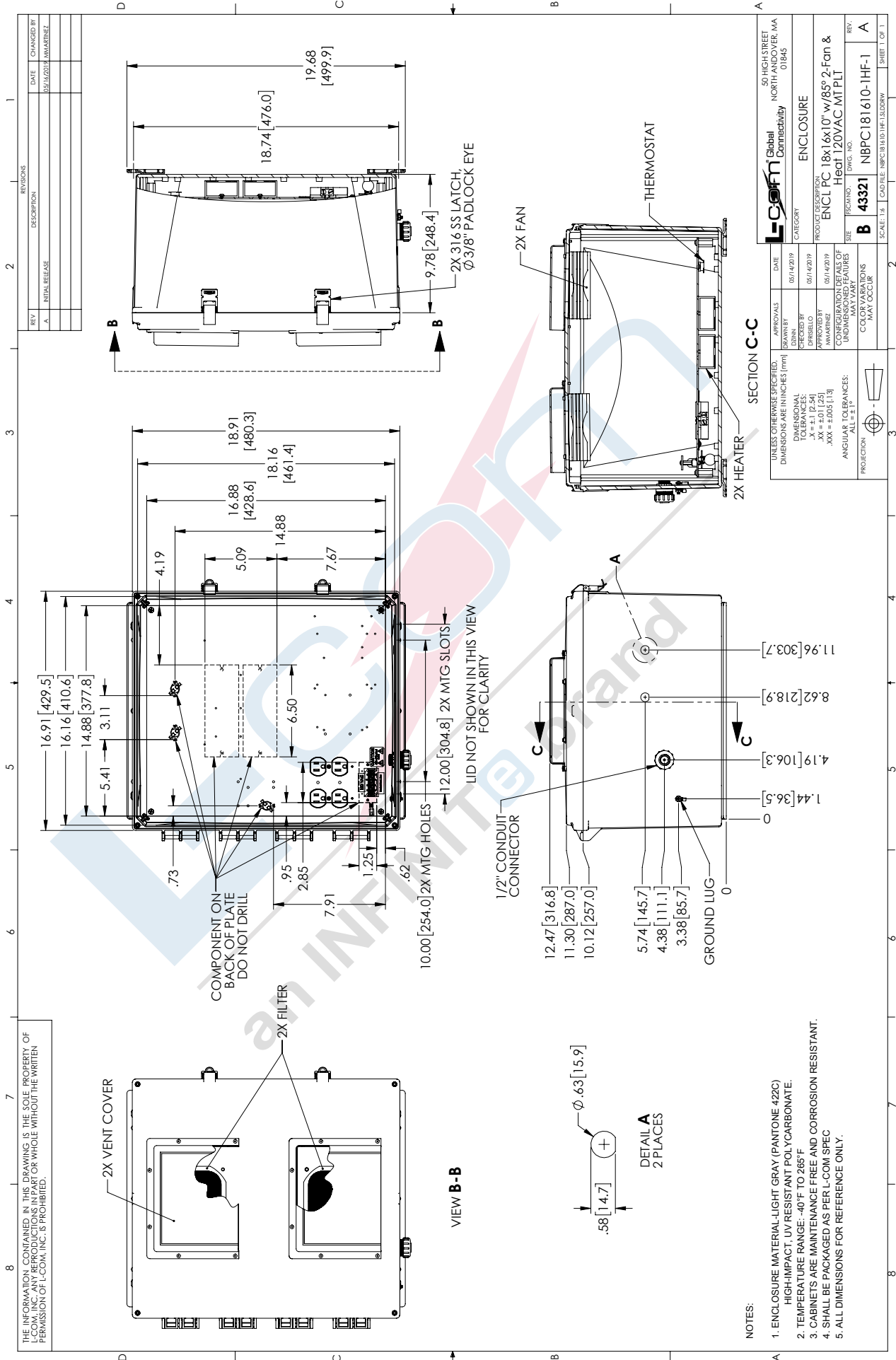
UL Listed	No
-----------	----

Click the following link (or enter part number in "SEARCH" on website) to obtain additional part information including price, inventory and certifications: [18x16x10 Polycarbonate Weatherproof Outdoor IP24 NEMA 3R Enclosure 120VAC Mount Plate Mechanical Thermostat Heat & 85F Turn on Fan Dark Gray NBPC181610-1HF-1](https://www.l-com.com/nema-enclosures-18x16x10-polycarb-weatherproof-nema-3r-encl-120vac-mnt-plt-mech-therm-heat-85f-turn-on-fan-drk-gry-p.aspx)

URL: <https://www.l-com.com/nema-enclosures-18x16x10-polycarb-weatherproof-nema-3r-encl-120vac-mnt-plt-mech-therm-heat-85f-turn-on-fan-drk-gry-p.aspx>

# NBPC181610-1HF-1 CAD Drawing

18x16x10 Polycarbonate Weatherproof Outdoor IP24 NEMA 3R Enclosure 120VAC  
Mount Plate Mechanical Thermostat Heat & 85F Turn on Fan Dark Gray



REVISIONS		DATE	CHANGES BY
REV. A	INITIAL RELEASE	05/14/2019	JMARMINEZ

		50 HIGH STREET NORTH ANDOVER, MA 01845	
CATEGORY ENCLOSURE		PRODUCT DESCRIPTION ENCL PC 18x16x10" w/85F 2-Fan & HcT 120VAC-MT PLT	
APPROVALS DRAWN BY: 06/14/2019 CHECKED BY: 05/14/2019 APPROVED BY: 06/14/2019 UNDESIGNED PARTS MAY VARY		DWG. NO. <b>B 43321</b> NBPC181610-1HF-1	
DIMENSIONAL TOLERANCES UNLESS OTHERWISE SPECIFIED: DIMENSIONS ARE IN INCHES (MM) DECIMALS .125 (3.175) .XX = ±0.01 (254) .XXX = ±0.005 (127) ANGULAR TOLERANCES: ALL = ±1°		REV. A SHEET 16 OF 17	