



an INFINIT® brand



# 18x16x10 Polycarbonate Weatherproof Outdoor IP24 NEMA 3R Enclosure, Modified Base Drilled Mount Vented Lid Dark Gray

## NEMA Enclosures Technical Data Sheet

NBPC181610-00V

### Features

- High-Impact, UV Resistant Polycarbonate (Dark Gray)
- Stainless steel latches with padlock eye
- NEMA Type 3R / IP24 rated
- Fully gasketed vented lid & user installed wall mounting brackets
- Includes drilled aluminum mounting plate with AC socket cutouts

### Applications

- Remote Wireless LAN WiFi equipment installations
- Indoor and outdoor installations
- Rapid Deployment Installations
- Corrosive environments & hotspot applications
- Protection of equipment from theft or damage

### Description

The box is a rugged weatherproof enclosure that is ideal for both indoor and outdoor applications. Constructed from High-Impact, UV Resistant Polycarbonate material that provides superior durability to impacts and ease of modification while maintaining minimum weight. It is well suited for high temperature or corrosive environments. The lid includes two vents with installed rain guards and filters. The included wall mount brackets come uninstalled and bagged with their hardware inside of the enclosure. Once the brackets are installed the enclosure can be mounted directly to any flat wall surface provided proper screws are used into secure studs. The brackets, once installed, also allow you to use our HGX-PMT pole mount kits. The lid features a non-metallic hinge system that allows for quick removal & can be reattached just as quickly without the need for any tools. The enclosure comes with a pair of stainless-steel latches with padlock eyes allowing you to secure the enclosure from tampering. The enclosure comes in a Dark Gray (Pantone 422C)

#### Mounting Plate

The modified aluminum mounting plate included with the NBPC181610-00V comes with pre-drilled and cut holes to use as needed to mount WLAN equipment or whatever equipment you may require. The enclosure also features holes for two N-Bulkhead lightning protectors or connectors, a grounding lug and cable conduit connector.

The HGX-PMT series of pole mounting kits allow the populated enclosure to be securely mounted to a variety of different size poles.

Compatible versions include HGX-PMT13, HGX-PMT16, HGX-PMT28, HGX-PMT29, HGX-PMT30 & HGX-PMT33

#### Size

Outer Height	18.9 in	[480.06 mm]
Outer Width	16.8 in	[426.72 mm]
Outer Depth	11.3 in	[287.02 mm]
Inner Height	18.2 in	[462.28 mm]
Inner Width	16.2 in	[411.48 mm]
Inner Depth	9.7 in	[246.38 mm]
Weight	17.3 lbs	[7.85 kg]
Enclosure Material	Polycarbonate	

### Environmental Specifications

Temperature Rating	-40° to 265° F [-40° to 129° C]
NEMA Rating	3R
Ingress Protection (IP) Rating	IP24

Click the following link (or enter part number in "SEARCH" on website) to obtain additional part information including price, inventory and certifications: [18x16x10 Polycarbonate Weatherproof Outdoor IP24 NEMA 3R Enclosure, Modified Base Drilled Mount Vented Lid Dark Gray NBPC181610-00V](#)



an INFINIT<sup>e</sup> brand

18x16x10 Polycarbonate Weatherproof Outdoor IP24 NEMA 3R Enclosure, Modified Base Drilled Mount Vented Lid Dark Gray



## NEMA Enclosures Technical Data Sheet

**NBPC181610-00V**

### Compliance Certifications

UL Listed

No

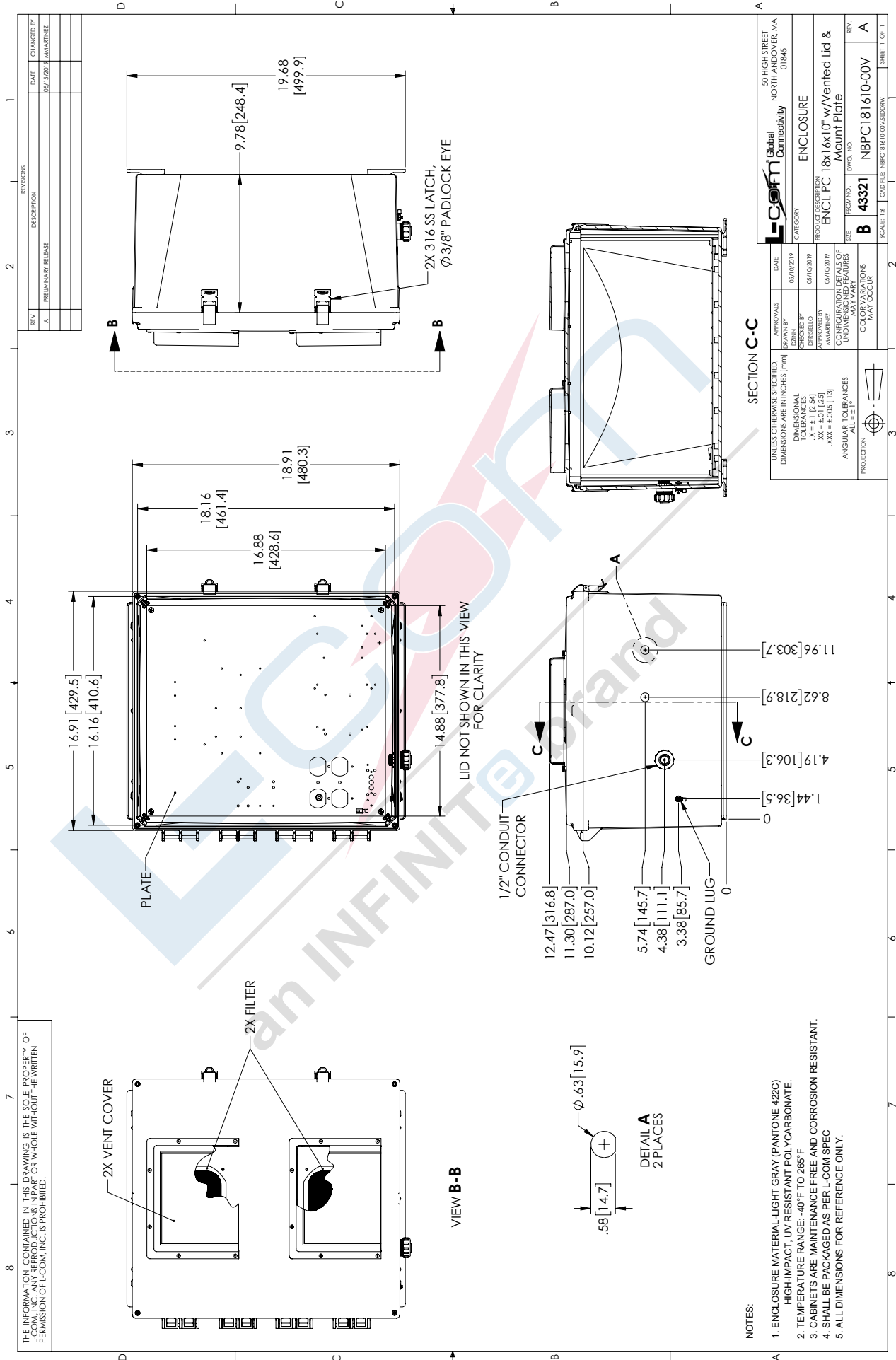
Click the following link (or enter part number in "SEARCH" on website) to obtain additional part information including price, inventory and certifications: [18x16x10 Polycarbonate Weatherproof Outdoor IP24 NEMA 3R Enclosure, Modified Base Drilled Mount Vented Lid Dark Gray NBPC181610-00V](https://www.l-com.com/nema-enclosures-18x16x10-polycarb-weatherproof-nema-3r-enclosure-modified-base-drilled-mount-vented-lid-dark-gray)

URL: <https://www.l-com.com/nema-enclosures-18x16x10-polycarb-weatherproof-nema-3r-enclosure-modified-base-drilled-mount-vented-lid-dark-gray-p.aspx>



# NBPC181610-00V CAD Drawing

18x16x10 Polycarbonate Weatherproof Outdoor IP24 NEMA 3R Enclosure, Modified Base Drilled Mount Vented Lid Dark Gray



THE INFORMATION CONTAINED IN THIS DRAWING IS THE SOLE PROPERTY OF L-COM, INC. ANY REPRODUCTION OR TRANSMISSION OF THIS DRAWING WITHOUT THE WRITTEN PERMISSION OF L-COM, INC. IS PROHIBITED.

- NOTES:
1. ENCLOSURE MATERIAL-LIGHT GRAY (PANTONE 422C) HIGH-IMPACT, UV RESISTANT POLYCARBONATE.
  2. TEMPERATURE RANGE: -40°F TO 265°F.
  3. CABINETS ARE MAINTENANCE FREE AND CORROSION RESISTANT.
  4. SHALL BE PACKAGED AS PER L-COM SPEC.
  5. ALL DIMENSIONS FOR REFERENCE ONLY.