



an INFINIT® brand

# 14x12x06 Polycarbonate Weatherproof Outdoor IP24 NEMA 3R Enclosure, 120VAC Mount Plate Solid State Thermostat Heat & Fan Dark Gray



## NEMA Enclosures Technical Data Sheet

NBPC141206-1HFS

### Features

- High-Impact, UV Resistant Polycarbonate (Dark Gray)
- Stainless steel latches with padlock eye
- NEMA Type 3R / IP24 rated
- Fully gasketed vented lid with filters & user installed wall mounting brackets
- Features aluminum mounting plate with surge protected duplex 120 VAC outlets & solid state thermostat controlled heating and cooling system

### Applications

- Remote Wireless LAN WiFi equipment installations
- Indoor and outdoor installations
- Rapid Deployment Installations
- Corrosive environments & hotspot applications
- Protection of equipment from theft or damage

### Description

The box is a rugged weatherproof enclosure that is ideal for both indoor and outdoor applications. Constructed from High-Impact, UV Resistant Polycarbonate material that provides superior durability to impacts and ease of modification while maintaining minimum weight. It is well suited for high temperature or corrosive environments. The lid includes two vents with installed rain guards and filters. The included wall mount brackets come uninstalled and bagged with their hardware inside of the enclosure. Once the brackets are installed the enclosure can be mounted directly to any flat wall surface provided proper screws are used into secure studs. The brackets, once installed, also allow you to use our HGX-PMT pole mount kits. The lid features a non-metallic hinge system that allows for quick removal & can be reattached just as quickly without the need for any tools. The enclosure comes with a pair of stainless-steel latches with padlock eyes allowing you to secure the enclosure from tampering. The enclosure comes in a Dark Gray (Pantone 422C)

#### Mounting Plate

The aluminum mounting plate included with the NBPC141206-1HFS features standard surge protected duplex 120 VAC outlets and a terminal block for easy hook up to externally provided line power. The enclosure also features holes for two N-Bulkhead Lightning Protectors or Connectors, a grounding lug and cable conduit connector.

#### Heating & Cooling

To help ensure trouble-free operation of electronic equipment, proper operating temperatures inside an enclosure needs to be controlled. With the built-in heater and cooling fan, internal temperatures can be better maintained. This model is ideal in Hot and/or Cold environments.

For Heating the NBPC141206-1HFS includes our exclusive solid state temperature controller that utilizes a 200W heater. The controller features improved temperature set point accuracy. The heater turns on when the internal temperature drops to 16° F (-9° C) ±5° and turns off when the temperature hits 25° F (-4° C) ±5°. The heater does not require the use of any of the AC outlets, leaving them all available for your equipment. No extra room for the heaters is required since it is mounted underneath the plate.

For Cooling the NBPC141206-1HFS model includes our exclusive solid state temperature controller connected to a 16.4W fan. The high airflow, low noise fan used allows warm air to be actively pushed out while the lower vent passively pulls in outside air into the enclosure. Filters for both ports prevent foreign objects or debris from entering the enclosure. The controller features improved temperature set point accuracy. The fan turns on when the internal temperature rises to 90° F (32° C) ±5° and turns off at 81° F (27° C) ±5°. Like the heater, the cooling fan does not require the use of any of the AC outlets, leaving them all available for your equipment.

The HGX-PMT series of pole mounting kits allow the populated enclosure to be securely mounted to a variety of different size poles.

Compatible versions include HGX-PMT13, HGX-PMT16, HGX-PMT28, HGX-PMT29, HGX-PMT30, & HGX-PMT33

Click the following link (or enter part number in "SEARCH" on website) to obtain additional part information including price, inventory and certifications: [14x12x06 Polycarbonate Weatherproof Outdoor IP24 NEMA 3R Enclosure, 120VAC Mount Plate Solid State Thermostat Heat & Fan Dark Gray NBPC141206-1HFS](#)



an INFINIT<sup>e</sup> brand

# 14x12x06 Polycarbonate Weatherproof Outdoor IP24 NEMA 3R Enclosure, 120VAC Mount Plate Solid State Thermostat Heat & Fan Dark Gray



## NEMA Enclosures Technical Data Sheet

**NBPC141206-1HFS**

### Size

Outer Height	14.6 in	[370.84 mm]
Outer Width	12.6 in	[320.04 mm]
Outer Depth	7.4 in	[187.96 mm]
Inner Height	13.7 in	[347.98 mm]
Inner Width	11.7 in	[297.18 mm]
Inner Depth	5.9 in	[149.86 mm]
Weight	13.3 lbs	[6.03 kg]
Enclosure Material	Polycarbonate	

### Environmental Specifications

Temperature Rating	-40° to 265° F [-40° to 129° C]
NEMA Rating	3R
Ingress Protection (IP) Rating	IP24

### Compliance Certifications

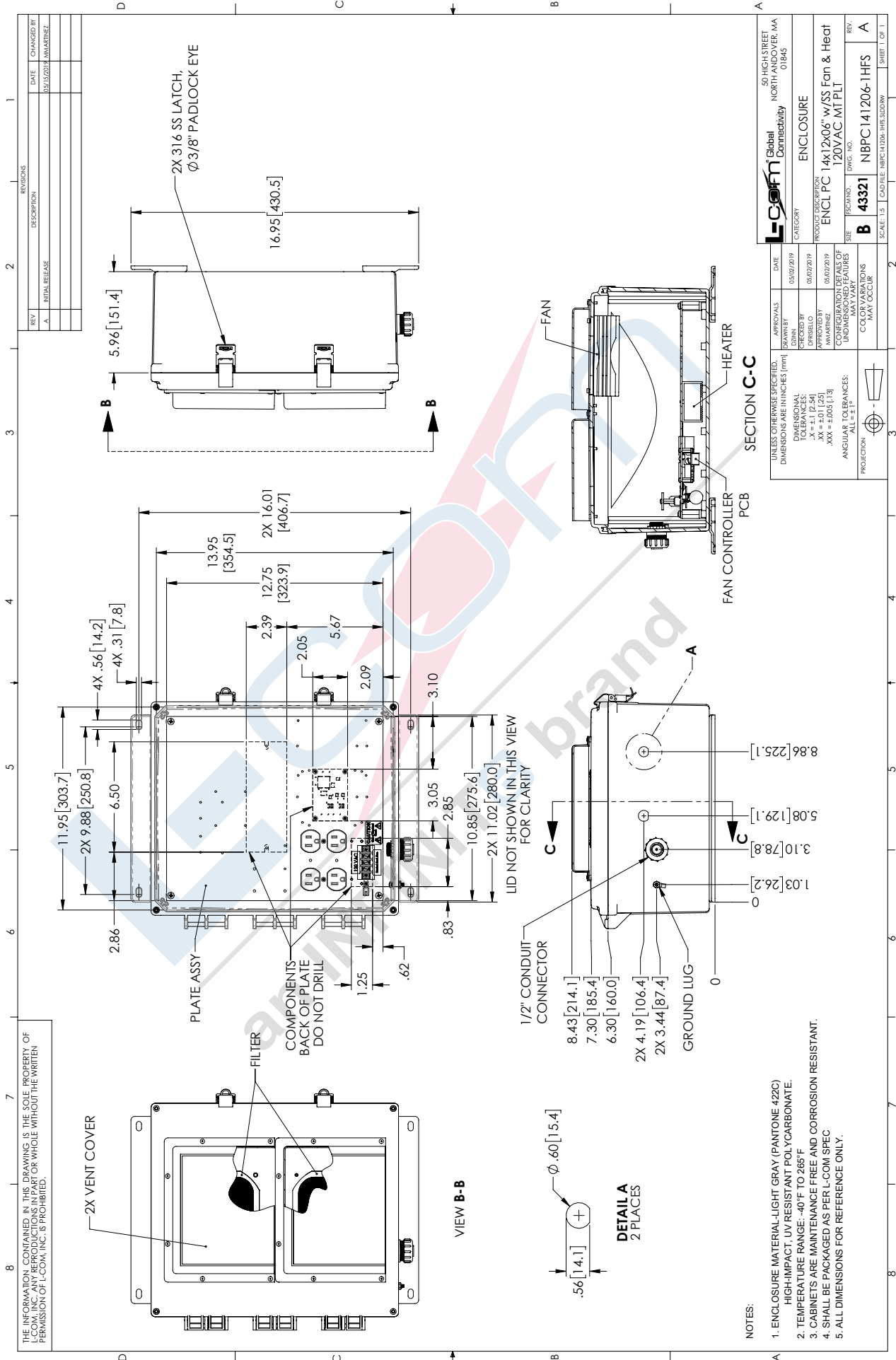
UL Listed	No
-----------	----

Click the following link (or enter part number in "SEARCH" on website) to obtain additional part information including price, inventory and certifications: [14x12x06 Polycarbonate Weatherproof Outdoor IP24 NEMA 3R Enclosure, 120VAC Mount Plate Solid State Thermostat Heat & Fan Dark Gray NBPC141206-1HFS](https://www.l-com.com/nema-enclosures-14x12x06-polycarb-weatherproof-nema-3r-encl-120vac-mnt-plate-solid-state-therm-heat-fan-dark-gray-p.aspx)

URL: <https://www.l-com.com/nema-enclosures-14x12x06-polycarb-weatherproof-nema-3r-encl-120vac-mnt-plate-solid-state-therm-heat-fan-dark-gray-p.aspx>

# NBPC141206-1HFS CAD Drawing

14x12x06 Polycarbonate Weatherproof Outdoor IP24 NEMA 3R Enclosure,  
120VAC Mount Plate Solid State Thermostat Heat & Fan Dark Gray



THE INFORMATION CONTAINED IN THIS DRAWING IS THE SOLE PROPERTY OF L-COM, INC. ANY REPRODUCTION OR TRANSMISSION OF THIS DRAWING WITHOUT THE WRITTEN PERMISSION OF L-COM, INC. IS PROHIBITED.

REV.	DESCRIPTION	DATE	CHANGED BY
A	INITIAL RELEASE	05/15/2019	JMMARTINEZ

		50 HIGH STREET NORTH ANDOVER, MA 01845
ENCLOSURE		
PRODUCT DESCRIPTION ENCL PC 14x12x06" w/SS Fan & Heat 120VAC M1 PL1		
SIZE B 43321	DWG. NO. NBPC141206-1HFS	REV. A
SCALE: 1:1 CAD FILE: NBPC141206-1HFS.SLDRAW		

APPROVALS DATE: 06/02/2019 DRAWN BY: JMMARTINEZ CHECKED BY: JMMARTINEZ APPROVED BY: JMMARTINEZ	DIMENSIONAL TOLERANCES .XX = ±0.1 [2.5] .XXX = ±0.05 [1.3] ANGULAR TOLERANCES: ALL = ±1°
--	--

UNLESS OTHERWISE SPECIFIED, DIMENSIONS ARE IN INCHES (MM)	DIMENSIONAL TOLERANCES .XX = ±0.1 [2.5] .XXX = ±0.05 [1.3] ANGULAR TOLERANCES: ALL = ±1°
--	--

COLOR VARIATIONS MAY OCCUR	PROJECTION 
-------------------------------	----------------

- NOTES:
- ENCLOSURE MATERIAL-LIGHT GRAY (PANTONE 422C) HIGH-IMPACT, UV RESISTANT POLYCARBONATE.
  - TEMPERATURE RANGE: -40°F TO 265°F
  - CABINETS ARE MAINTENANCE FREE AND CORROSION RESISTANT.
  - SHALL BE PACKAGED AS PER L-COM SPEC
  - ALL DIMENSIONS FOR REFERENCE ONLY.

1/2" CONDUIT CONNECTOR 8.43 [214.1] 7.30 [185.4] 6.30 [160.0]	1.03 [26.2] 0 3.10 [78.8] 5.08 [129.1] 8.86 [225.1]
--	---

2X 4.19 [106.4] 2X 3.44 [87.4]	GROUND LUG 0
-----------------------------------	-----------------

LID NOT SHOWN IN THIS VIEW FOR CLARITY

SECTION C-C

FAN CONTROLLER PCB

FAN

HEATER

2X VENT COVER

VIEW B-B

DETAIL A  
2 PLACES

PLATE ASSY

FILTER

COMPONENTS BACK OF PLATE DO NOT DRILL

2X 316 SS LATCH

Ø 3/8" PADLOCK EYE

2X 9.88 [250.8]

11.95 [303.7]

4X .56 [14.2]

4X .31 [7.8]

13.95 [354.5]

12.75 [323.9]

2X 16.01 [406.7]

2.39

2.05

5.67

2.09

3.10

10.85 [275.6]

2X 11.02 [280.0]

3.05

2.85

1.25

.62

.83

5.96 [151.4]

16.95 [430.5]

Ø .60 [15.4]

.56 [14.1]