



an INFINIT® brand

14x12x06 Polycarbonate Weatherproof Outdoor IP24 NEMA 3R Enclosure 120VAC Mount Plate Mechanical Thermostat Heat & 85F Turn on Fan Dark Gray



NEMA Enclosures Technical Data Sheet

NBPC141206-1HF-1

Features

- High-Impact, UV Resistant Polycarbonate (Dark Gray)
- Stainless steel latches with padlock eye
- NEMA Type 3R / IP24 rated
- Fully gasketed vented lid with filters & user installed wall mounting brackets
- Features aluminum mounting plate with surge protected duplex 120 VAC outlets & thermostat controlled heating & cooling system

Applications

- Remote Wireless LAN WiFi equipment installations
- Indoor and outdoor installations
- Rapid Deployment Installations
- Corrosive environments & hotspot applications
- Protection of equipment from theft or damage

Description

The box is a rugged weatherproof enclosure that is ideal for both indoor and outdoor applications. Constructed from High-Impact, UV Resistant Polycarbonate material that provides superior durability to impacts and ease of modification while maintaining minimum weight. It is well suited for high temperature or corrosive environments. The lid includes two vents with installed rain guards and filters. The included wall mount brackets come uninstalled and bagged with their hardware inside of the enclosure. Once the brackets are installed the enclosure can be mounted directly to any flat wall surface provided proper screws are used into secure studs. The brackets, once installed, also allow you to use our HGX-PMT pole mount kits. The lid features a non-metallic hinge system that allows for quick removal & can be reattached just as quickly without the need for any tools. The enclosure comes with a pair of stainless-steel latches with padlock eyes allowing you to secure the enclosure from tampering. The enclosure comes in a Dark Gray (Pantone 422C)

Mounting Plate

The aluminum mounting plate included with the NBPC141206-1HF-1 features standard surge protected duplex 120 VAC outlets and a terminal block for easy hook up to externally provided line power. The enclosure also features holes for two N-Bulkhead Lightning Protectors or Connectors, a grounding lug and cable conduit connector.

Heating & Cooling

To help ensure trouble-free operation of electronic equipment, proper operating temperatures inside an enclosure need to be controlled. With the built-in heater and cooling fan, internal temperatures can be better maintained. This model is ideal in Hot and/or Cold environments.

For Heating the NBPC141206-1HF-1 includes a thermostat-controlled 200W heater. The heater turns on when the internal temperature drops to 40° F (4° C) $\pm 7^\circ$ and turns off at 60° F (15° C) $\pm 5^\circ$. The heater does not require the use of any of the AC outlets, leaving them all available for your equipment. No extra room for the heater is required since it is mounted underneath the plate.

For Cooling the NBPC141206-1HF-1 model includes a thermostat-controlled 16.4W fan. The high airflow, low noise fans used allows warm air to be actively pushed out while the lower vent passively pulls in outside air into the enclosure. Filters for both ports prevent foreign objects or debris from entering the enclosure. The fan turns on when the internal temperature rises to 85° F (29° C) $\pm 5^\circ$ and turns off at 67° F (29° C) $\pm 5^\circ$. Like the heater, the cooling fan does not require the use of any of the AC outlets, leaving them all available for your equipment.

The HGX-PMT series of pole mounting kits allow the populated enclosure to be securely mounted to a variety of different size poles.

Compatible versions include HGX-PMT13, HGX-PMT16, HGX-PMT28, HGX-PMT29, HGX-PMT30, & HGX-PMT33

Click the following link (or enter part number in "SEARCH" on website) to obtain additional part information including price, inventory and certifications: [14x12x06 Polycarbonate Weatherproof Outdoor IP24 NEMA 3R Enclosure 120VAC Mount Plate Mechanical Thermostat Heat & 85F Turn on Fan Dark Gray NBPC141206-1HF-1](#)



an INFINITE® brand

14x12x06 Polycarbonate Weatherproof Outdoor
IP24 NEMA 3R Enclosure 120VAC Mount Plate Mechanical
Thermostat Heat & 85F Turn on Fan Dark Gray



NEMA Enclosures Technical Data Sheet

NBPC141206-1HF-1

Size

Outer Height	14.6 in	[370.84 mm]
Outer Width	12.6 in	[320.04 mm]
Outer Depth	7.4 in	[187.96 mm]
Inner Height	13.7 in	[347.98 mm]
Inner Width	11.7 in	[297.18 mm]
Inner Depth	5.9 in	[149.86 mm]
Weight	13.3 lbs	[6.03 kg]
Enclosure Material	Polycarbonate	

Environmental Specifications

Temperature Rating	-40° to 265° F [-40° to 129° C]
NEMA Rating	3R
Ingress Protection (IP) Rating	IP24

Compliance Certifications

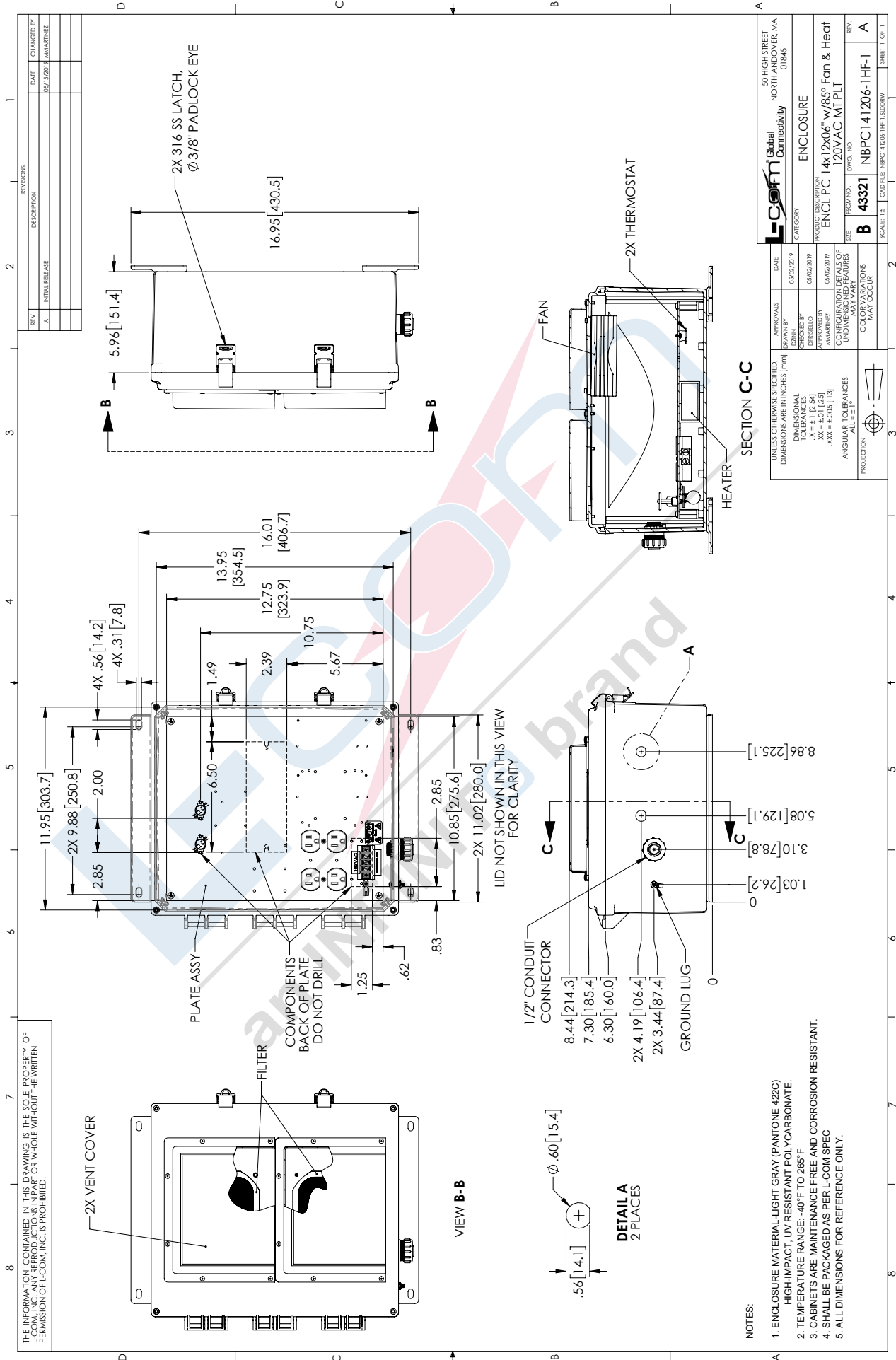
UL Listed	No
-----------	----

Click the following link (or enter part number in "SEARCH" on website) to obtain additional part information including price, inventory and certifications: [14x12x06 Polycarbonate Weatherproof Outdoor IP24 NEMA 3R Enclosure 120VAC Mount Plate Mechanical Thermostat Heat & 85F Turn on Fan Dark Gray NBPC141206-1HF-1](https://www.l-com.com/nema-enclosures-14x12x06-polycarb-weatherproof-nema-3r-encl-120vac-mount-plate-mech-therm-heat-85f-fan-dark-gray-p.aspx)

URL: <https://www.l-com.com/nema-enclosures-14x12x06-polycarb-weatherproof-nema-3r-encl-120vac-mount-plate-mech-therm-heat-85f-fan-dark-gray-p.aspx>

NBPC141206-1HF-1 CAD Drawing

14x12x06 Polycarbonate Weatherproof Outdoor IP24 NEMA 3R Enclosure 120VAC
Mount Plate Mechanical Thermostat Heat & 85F Turn on Fan Dark Gray



REV.	DESCRIPTION	DATE	CHANGED BY
A	INITIAL RELEASE	05/15/2019	JMMARINEZ

L-com Global Connectivity ENCLOSURE		DATE: 05/02/2019 DRAWN BY: JMMARINEZ CHECKED BY: JMMARINEZ APPROVED BY: JMMARINEZ	50 HIGH STREET NORTH ANDOVER, MA 01845
PRODUCT DESCRIPTION: ENCL PC 14x12x06 w/85° Fan & Heat 120VAC M1 PL1		DWG. NO: B 43321	REV. A
UNLESS OTHERWISE SPECIFIED: DIMENSIONS ARE IN INCHES (MM)		DIMENSIONAL TOLERANCES: .XX = ±0.01 (25) .XXX = ±0.005 (13)	CONFIGURATIONS OF ALL OF UNDESIGNATED FEATURES MAY VARY
COLOR VARIATIONS MAY OCCUR		PROJECTION:	SCALE: 1:1 SHEET 15 OF 15

THE INFORMATION CONTAINED IN THIS DRAWING IS THE SOLE PROPERTY OF L-COM, INC. ANY REPRODUCTION OR TRANSMISSION IN ANY FORM OR BY ANY MEANS WITHOUT THE WRITTEN PERMISSION OF L-COM, INC. IS PROHIBITED.

- NOTES:
- ENCLOSURE MATERIAL-LIGHT GRAY (PANTONE 422C) HIGH-IMPACT, UV RESISTANT POLYCARBONATE.
 - TEMPERATURE RANGE: -40°F TO 265°F
 - CABINETS ARE MAINTENANCE FREE AND CORROSION RESISTANT.
 - SHALL BE PACKAGED AS PER L-COM SPEC
 - ALL DIMENSIONS FOR REFERENCE ONLY.