



an INFINIT® brand



14x12x06 Polycarbonate Weatherproof Outdoor IP24 NEMA 3R Enclosure, Modified Base Drilled Mount Vented Lid Dark Gray

NEMA Enclosures Technical Data Sheet

NBPC141206-00V

Features

- High-Impact, UV Resistant Polycarbonate (Dark Gray)
- Stainless steel latches with padlock eye
- NEMA Type 3R / IP24 rated
- Fully gasketed vented lid & user installed wall mounting brackets
- Includes drilled aluminum mounting plate with AC socket cutouts

Applications

- Remote Wireless LAN WiFi equipment installations
- Indoor and outdoor installations
- Rapid Deployment Installations
- Corrosive environments & hotspot applications
- Protection of equipment from theft or damage

Description

The box is a rugged weatherproof enclosure that is ideal for both indoor and outdoor applications. Constructed from High-Impact, UV Resistant Polycarbonate material that provides superior durability to impacts and ease of modification while maintaining minimum weight. It is well suited for high temperature or corrosive environments. The lid includes two vents with installed rain guards and filters. The included wall mount brackets come uninstalled and bagged with their hardware inside of the enclosure. Once the brackets are installed the enclosure can be mounted directly to any flat wall surface provided proper screws are used into secure studs. The brackets, once installed, also allow you to use our HGX-PMT pole mount kits. The lid features a non-metallic hinge system that allows for quick removal & can be reattached just as quickly without the need for any tools. The enclosure comes with a pair of stainless-steel latches with padlock eyes allowing you to secure the enclosure from tampering. The enclosure comes in a Dark Gray (Pantone 422C)

Mounting Plate

The modified aluminum mounting plate included with the NBPC141206-00V comes with pre-drilled and cut holes to use as needed to mount WLAN equipment or whatever equipment you may require. The enclosure also features holes for two N-Bulkhead Lightning Protectors or Connectors, a grounding lug and cable conduit connector.

The HGX-PMT series of pole mounting kits allow the populated enclosure to be securely mounted to a variety of different size poles.

Compatible versions include HGX-PMT13, HGX-PMT16, HGX-PMT28, HGX-PMT29, HGX-PMT30, & HGX-PMT33

Size

Outer Height	14.6 in	[370.84 mm]
Outer Width	12.6 in	[320.04 mm]
Outer Depth	7.4 in	[187.96 mm]
Inner Height	13.7 in	[347.98 mm]
Inner Width	11.7 in	[297.18 mm]
Inner Depth	5.9 in	[149.86 mm]
Weight	10.1 lbs	[4.58 kg]
Enclosure Material	Polycarbonate	

Environmental Specifications

Temperature Rating	-40° to 265° F [-40° to 129° C]
NEMA Rating	3R
Ingress Protection (IP) Rating	IP24

Click the following link (or enter part number in "SEARCH" on website) to obtain additional part information including price, inventory and certifications: [14x12x06 Polycarbonate Weatherproof Outdoor IP24 NEMA 3R Enclosure, Modified Base Drilled Mount Vented Lid Dark Gray NBPC141206-00V](#)



an INFINIT^e brand

14x12x06 Polycarbonate Weatherproof Outdoor IP24 NEMA 3R Enclosure, Modified Base Drilled Mount Vented Lid Dark Gray



NEMA Enclosures Technical Data Sheet

NBPC141206-00V

Compliance Certifications

UL Listed

No

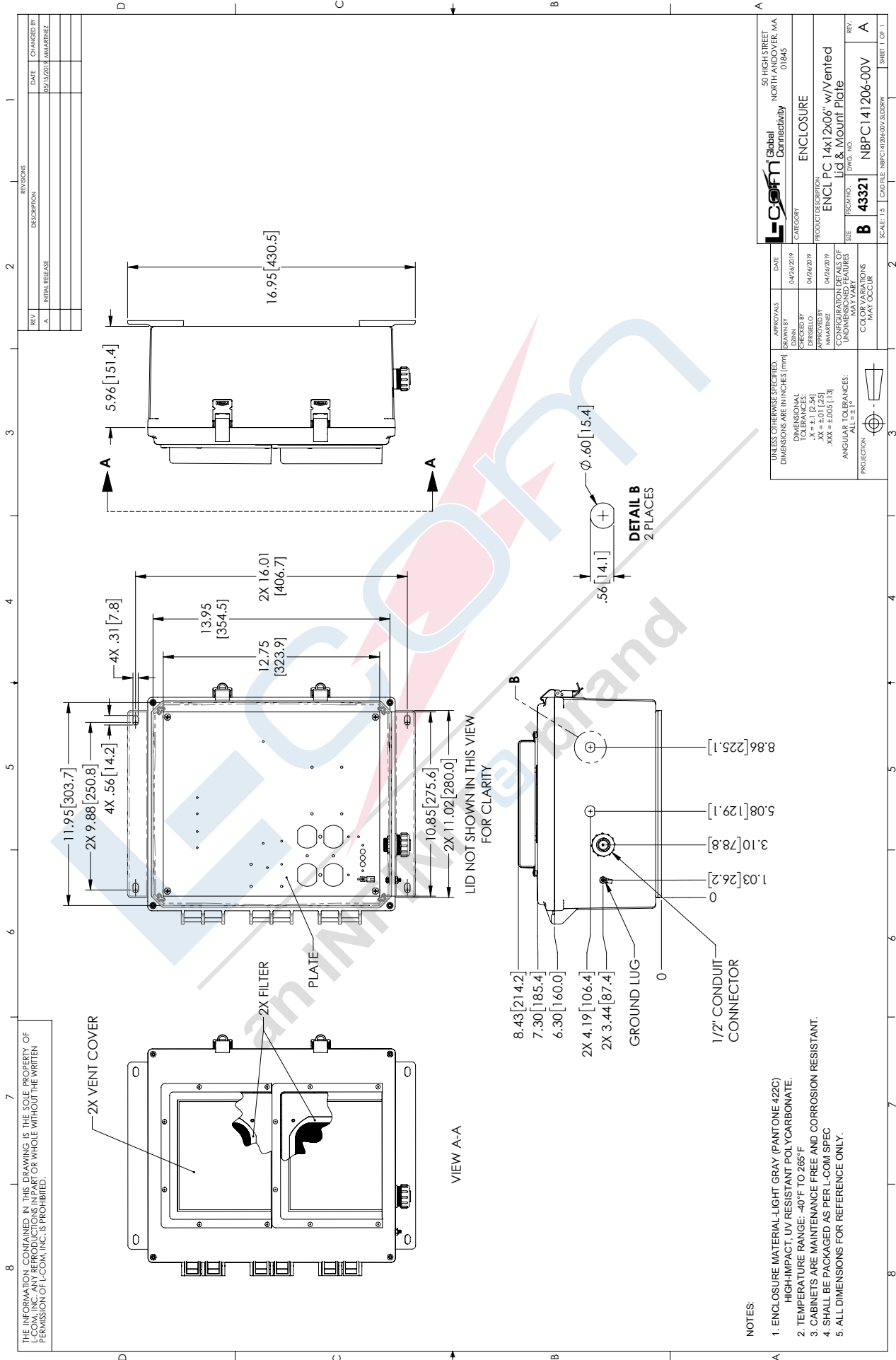
Click the following link (or enter part number in "SEARCH" on website) to obtain additional part information including price, inventory and certifications: [14x12x06 Polycarbonate Weatherproof Outdoor IP24 NEMA 3R Enclosure, Modified Base Drilled Mount Vented Lid Dark Gray NBPC141206-00V](https://www.l-com.com/nema-enclosures-14x12x06-polycarbonate-weatherproof-nema-3r-enclosure-modified-base-drilled-mount-vented-dark-gray-nbpc141206-00v)

URL: <https://www.l-com.com/nema-enclosures-14x12x06-polycarbonate-weatherproof-nema-3r-enclosure-modified-base-drilled-mount-vented-dark-gray-p.aspx>



NBPC141206-00V CAD Drawing

14x12x06 Polycarbonate Weatherproof Outdoor IP24 NEMA 3R Enclosure, Modified Base Drilled Mount Vented Lid Dark Gray



REV.	DESCRIPTION	DATE	CHANGED BY
A	INITIAL RELEASE	05/15/2019	J. W. MARINEZ

APPROVALS	DATE
DRAWN BY: J. L. WILSON	04/26/2019
CHECKED BY: J. L. WILSON	04/26/2019
APPROVED BY: J. W. MARINEZ	04/26/2019

UNLESS OTHERWISE SPECIFIED, DIMENSIONS ARE IN INCHES (MM)
DIMENSIONAL TOLERANCES UNLESS OTHERWISE SPECIFIED:
.XX = ±0.01 [0.25]
.XXX = ±0.005 [0.13]
ANGULAR TOLERANCES: ALL = ±1°

ENCLOSURE CATEGORY
ENCL PC 14x12x06" w/Vented Lid & Mount Plate

ENCLOSURE SIZE
14x12x06" w/Vented Lid & Mount Plate

DWG. NO.
43321

REV.
A

SCALE
1:1

FILE: NBPC141206-00V.DWG