

18x16x10 Polycarbonate Weatherproof Outdoor
IP66 NEMA 4X Enclosure, DIN Rail Mount Black



NBBPC181610-000DR

Features

- High-Impact, UV Resistant Polycarbonate (Black)
- Stainless steel latches with padlock eye
- NEMA Type 4X / IP66* rated (includes (4x) optional lid corner screws**)
- Fully gasketed lid & user installed wall mounting brackets
- Includes Mounting Rails for DIN3 Rails and DIN modules in the Enclosure

Applications

- Remote Wireless LAN WiFi equipment installations
- Indoor and outdoor installations
- Rapid Deployment Installations
- Corrosive environments & hotspot applications
- Protection of equipment from theft or damage

Description

The box is a rugged weatherproof enclosure that is ideal for both indoor and outdoor applications. Constructed from High-Impact, UV Resistant Polycarbonate material that provides superior durability to impacts and ease of modification while maintaining minimum weight. It is well suited for high temperature or corrosive environments. The included wall mount brackets come uninstalled and bagged with their hardware inside of the enclosure. Once the brackets are installed the enclosure can be mounted directly to any flat wall surface provided proper screws are used into secure studs. The brackets, once installed, also allow you to use our HGX-PMT pole mount kits. The lid features a non-metallic hinge system that allows for quick removal & can be reattached just as quickly without the need for any tools. The enclosure comes with a pair of stainless-steel latches with padlock eyes allowing you to secure the enclosure from tampering. The enclosure comes in black.

Mounting Rails

The aluminum mounting rails installed within the NBBPC181610-000DR provides provisions to mount DIN3 Rails for installing a number of off-the-shelf DIN Modules and systems. The HGX-PMT13 Mounting Package allows the populated enclosure to be mounted on poles, securely, in and around your site. The flexibility of DIN rail mounting system and the large selection of modules available offer any number of application solutions indoors and out, even in harsh environments. The NEMA 4X/IP66 provides a sealed environment to safely house the control, routing and power systems being designed with the DIN Modules. The DIN Rails can be adapted to hold other systems and components to accommodate their placement in the enclosure. The enclosure features holes for two N-Bulkhead lightning protectors or connectors, a grounding lug, and a cable conduit connector to accept power or system feeds into the enclosure.

The HGX-PMT series of pole mounting kits allow the populated enclosure to be securely mounted to a variety of different size poles.

Compatible versions include HGX-PMT13, HGX-PMT16, HGX-PMT28, HGX-PMT29, HGX-PMT30 & HGX-PMT33

*Note: Enclosure ports (Cable conduit connector and N-type holes for lightning protectors or connectors) must be properly sealed to maintain NEMA Type 4X / IP66 rating

**Note: If all four of the optional lid screws are installed the enclosure can achieve. NEMA 6P / IP68 however all of the openings would have to be properly sealed with an IP68 rated plug, gland or coupler.

Size

Outer Height	18.9 in	[480.06 mm]
Outer Width	16.8 in	[426.72 mm]
Outer Depth	11.3 in	[287.02 mm]
Inner Height	18.2 in	[462.28 mm]
Inner Width	16.2 in	[411.48 mm]

Click the following link (or enter part number in "SEARCH" on website) to obtain additional part information including price, inventory and certifications:
[18x16x10 Polycarbonate Weatherproof Outdoor IP66 NEMA 4X Enclosure, DIN Rail Mount Black NBBPC181610-000DR](#)

18x16x10 Polycarbonate Weatherproof Outdoor IP66 NEMA 4X Enclosure, DIN Rail Mount Black



NBBPC181610-000DR

Inner Depth	9.7 in	[246.38 mm]
Weight	17.2 lbs	[7.8 kg]
Enclosure Material	Polycarbonate	

Environmental Specifications

Temperature Rating	-40° to 265°F [-40° to 129°C]
NEMA Rating	4X
Ingress Protection (IP) Rating	IP66

Compliance Certifications

UL Listed	No
-----------	----

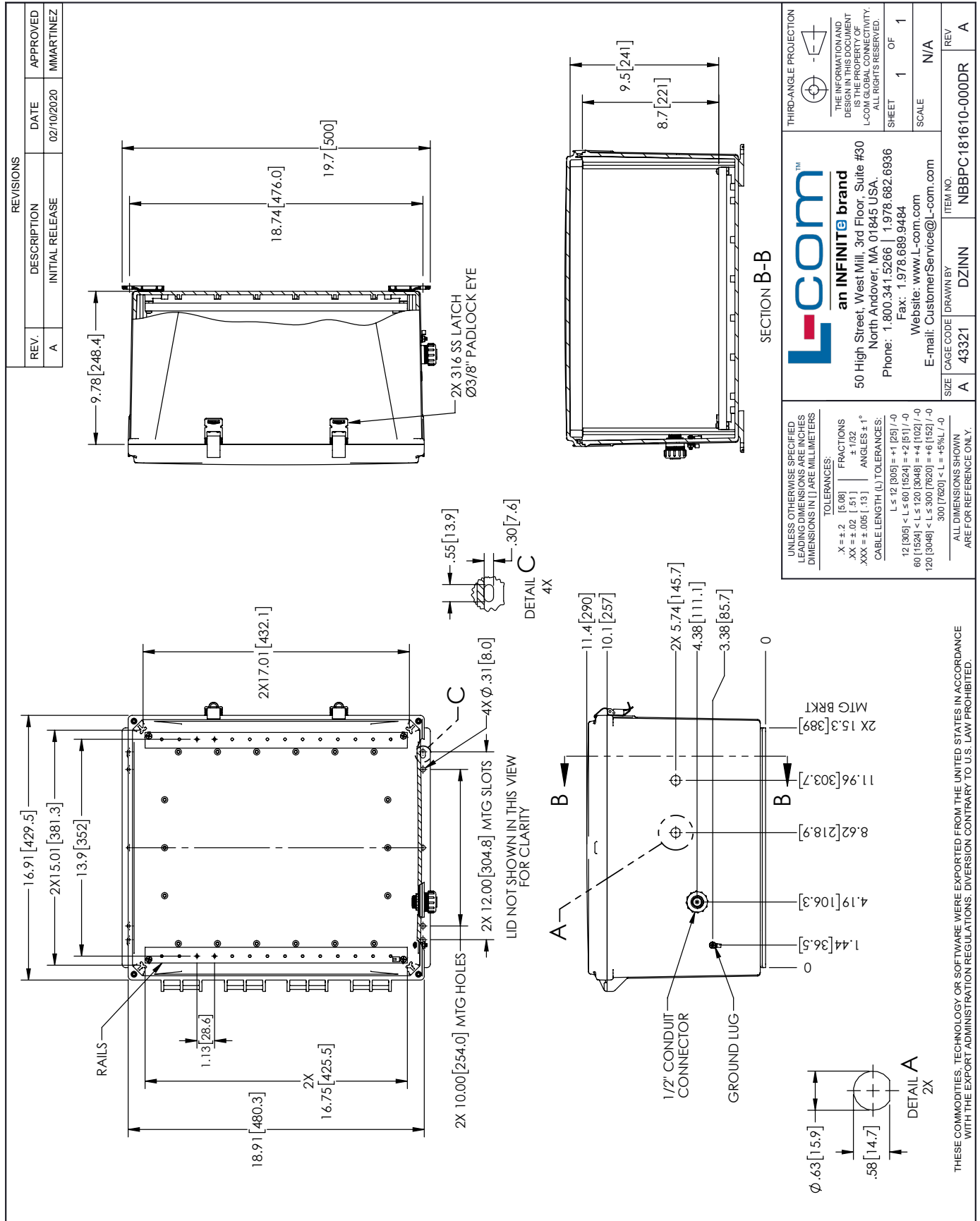
18x16x10 Polycarbonate Weatherproof Outdoor IP66 NEMA 4X Enclosure, DIN Rail Mount Black from L-com has same day shipment for domestic and International orders. Our portfolio includes coaxial cable assemblies, connectors, adapters and custom products as well as lightning and surge protectors, NEMA rated enclosures, and an RF product line which includes antennas, amplifiers, passive, and active components. Click the following link (or enter part number in "SEARCH" on website) to obtain additional part information including price, inventory and certifications: 18x16x10 Polycarbonate Weatherproof Outdoor IP66 NEMA 4X Enclosure, DIN Rail Mount Black NBBPC181610-000DR

URL: <https://www.l-com.com/18x16x10-polycarbonate-weatherproof-outdoor-ip66-nema-4x-enclosure-din-rail-mount-black-p.aspx>

The information contained within this document is accurate to the best of our knowledge and representative of the part described herein. It may be necessary to make modifications to the part and/or the documentation of the part in order to impliment improvements. L-com reserves the right to make such changes as required. Unless otherwise stated, all specifications are nominal. L-com does not make any representation or warranty regarding the suitability of the part described herein for any particular purpose, and L-com does not assume liability arising out of the use of any part or document.

The information contained within this document is accurate to the best of our knowledge and representative of the part described herein. It may be necessary to make modifications to the part and/or the documentation of the part in order to impliment improvements. L-com reserves the right to make such changes as required. Unless otherwise stated, all specifications are nominal. L-com does not make any representation or warranty regarding the suitability of the part described herein for any particular purpose, and L-com does not assume liability arising out of the use of any part or document.

L-com CAD Drawing



REVISIONS			
REV.	DESCRIPTION	DATE	APPROVED
A	INITIAL RELEASE	02/10/2020	MMARTINEZ

THIRD-ANGLE PROJECTION

THE INFORMATION AND DESIGN IN THIS DOCUMENT IS THE PROPERTY OF L-COM. ALL RIGHTS RESERVED.

SHEET 1 OF 1

SCALE N/A

ITEM NO. NBBPC181610-000DR

REV A

UNLESS OTHERWISE SPECIFIED LEADING DIMENSIONS ARE IN INCHES DIMENSIONS IN [] ARE MILLIMETERS

TOLERANCES:

X = ±.2 [5.08] FRACTIONS ± 1/32

XX = ±.02 [.51] ANGLES ± 1°

XXX = ±.005 [.13]

CABLE LENGTH (L) TOLERANCES:

L ≤ 12 [305] = +1 [25] / -0

12 [305] < L ≤ 60 [1524] = +2 [51] / -0

60 [1524] < L ≤ 120 [3048] = +4 [102] / -0

120 [3048] < L ≤ 300 [7620] = +6 [152] / -0

300 [7620] < L = +5%L / -0

ALL DIMENSIONS SHOWN ARE FOR REFERENCE ONLY.

SIZE A 43321 DRAWN BY DZINN

ITEM NO. NBBPC181610-000DR

REV A

L-com
an INFINITE brand

50 High Street, West Mill, 3rd Floor, Suite #30
North Andover, MA 01845 USA.
Phone: 1.800.341.5266 | 1.978.682.6936
Fax: 1.978.689.9484
Website: www.L-com.com
E-mail: CustomerService@L-com.com

SECTION B-B

THESE COMMODITIES, TECHNOLOGY OR SOFTWARE WERE EXPORTED FROM THE UNITED STATES IN ACCORDANCE WITH THE EXPORT ADMINISTRATION REGULATIONS. DIVERSION CONTRARY TO U.S. LAW PROHIBITED.