

Passive CWDM, 1 RU 19" Rack Mount Mux/Demux, 16 Ch Custom (skip 1391-1411nm) w/ 20nm spacing, start ch 1270nm, LC/UPC w/ MON (1%)



## CWC-CA327-00441R

### Features

- Passive
- CWDM
- 20nm spacing
- 19" Rack Mount
- Two Fiber Mux& Demux Combo
- 16 Channels (skipping 1391&1411nm)
- Starting with channel 1271nm
- LC/UPC connectors
- 1% Monitor option

### Applications

- Single Mode Fiber Networking
- Dual Fiber
- side by side mux and demux functions
- Metro transport
- Regional Distribution
- Inside Plant (ISP) Operation

### Description

The CWC-CA327-00441R is a CWDM Passive Filter with 16 CWDM Channels. The CWC-CA327-00441R is a 1RU 19" Rack Mount filter with Combo Mux

DeMux functionality. The CWC-CA327-00441R has 16 channels: 1271, 1291, 1311, 1331, 1351, 1371, 1431, 1451, 1471, 1491, 1511, 1531, 1551, 1571, 1591, and 1611nm (skipping 1391 and 1411nm) starting with 1271nm and with 20nm spacing. The CWC-CA327-00441R has LC/UPC connectors and has Monitor port option on Mux and Demux. The CWC-CA327-00441R is a dual fiber filter with one sending muxed signal and the other receiving a composite signal for demuxing. produces the high quality passive filters that your business can rely on. With products continually in stock and same-day shipping, our expert technical support and knowledgeable sales team can get you to the right parts for the job.

### Configuration

Connector Type	LC/UPC
Number of Channels	16
Module Function	Mux/DeMux
Filter Type	CWDM

### Filter Specifications

Description	Minimum	Typical	Maximum	Units
Operating Wavelength	1260		1635	nm
Pass Band	6.5			nm
Pass Band Ripple			0.5	dB
Center Wavelength (Channel)	1271		1611	nm
Channel Spacing		20		nm
Channel Insertion Loss			4	dB
Return Loss	45			dB
Directivity			50	dB
PDL			0.25	dB
PMD			0.2	PS
Power Handling			300	mW
Non-Adjacent Channel Isolation	0.2			dB
Channel to Monitor Port IL			25	dB

Click the following link (or enter part number in "SEARCH" on website) to obtain additional part information including price, inventory and certifications:  
[Passive CWDM, 1 RU 19" Rack Mount Mux/Demux, 16 Ch Custom \(skip 1391-1411nm\) w/ 20nm spacing, start ch 1270nm, LC/UPC w/ MON \(1%\)](#)

Passive CWDM, 1 RU 19" Rack Mount Mux/Demux, 16 Ch Custom (skip 1391-1411nm) w/ 20nm spacing, start ch 1270nm, LC/UPC w/ MON (1%)



COM to Monitor Port IL	23	dB
IL Thermal Stability	0.005	dB/degC
Wavelength Thermal Stability	0.002	nm/degC

### Environmental Specifications

#### Temperature

Operating Range -20 to +65 deg C

Storage Range -40 to +85 deg C

Humidity 5-98 %RH

**Compliance Certifications** (see [product page](#) for current document)

### Plotted and Other Data

Notes:

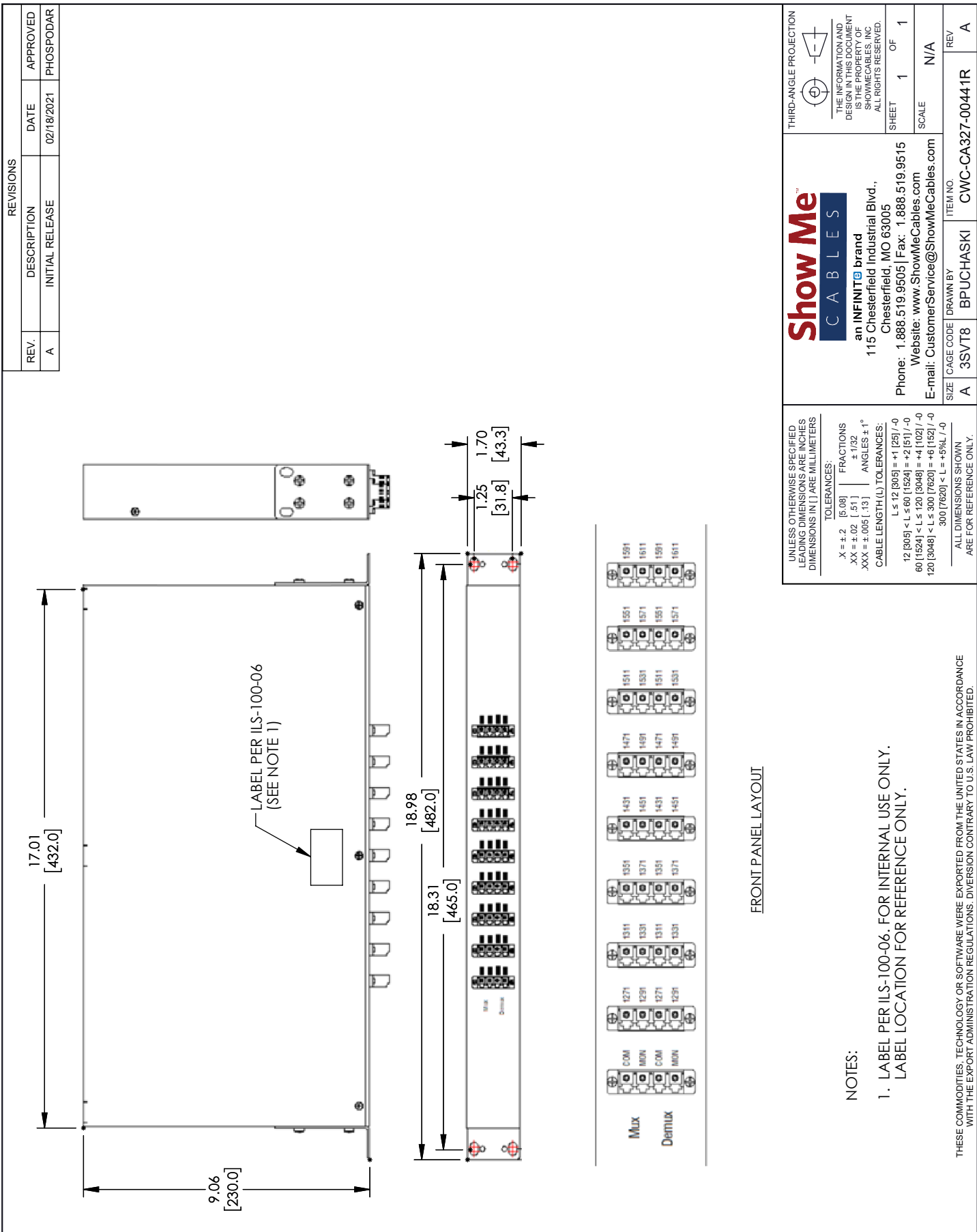
Passive CWDM, 1 RU 19" Rack Mount Mux/Demux, 16 Ch Custom (skip 1391-1411nm) w/ 20nm spacing, start ch 1270nm, LC/UPC w/ MON (1%) from Show Me Cables has same day shipment for domestic and International orders. Click the following link (or enter part number in "SEARCH" on website) to obtain additional part information including price, inventory and certifications.

URL: <https://www.showmecables.com/passive-cwdm-1-ru-19-rack-mount-mux-demux-16-ch-custom-skip-1391-1411nm-w-20nm-spacing-start-ch-1270nm-lc-upc-w-mon-1-pcw3c-ca327-nn44-p.aspx>

The information contained within this document is accurate to the best of our knowledge and representative of the part described herein. It may be necessary to make modifications to the part and/or the documentation of the part in order to implement improvements. Show Me Cables reserves the right to make such changes as required. Unless otherwise stated, all specifications are nominal. Show Me Cables does not make any representation or warranty regarding the suitability of the part described herein for any particular purpose, and Show Me Cables does not assume liability arising out of the use of any part or document.

Passive CWDM, 1 RU 19" Rack Mount Mux/Demux, 16 Ch Custom (skip 1391-1411nm) w/ 20nm spacing, start ch 1270nm, LC/UPC w/ MON (1%)

CWC-CA327-00441R CAD Drawing



FRONT PANEL LAYOUT

NOTES:

1. LABEL PER ILS-100-06. FOR INTERNAL USE ONLY. LABEL LOCATION FOR REFERENCE ONLY.

UNLESS OTHERWISE SPECIFIED LEADING DIMENSIONS ARE INCHES DIMENSIONS IN [ ] ARE MILLIMETERS

TOLERANCES:  
 .X ± .2 [5.08] FRACTIONS  
 .XX ± .02 [51] ± 1/32  
 .XXX ± .005 [13] ANGLES ± 1°

CABLE LENGTH (L) TOLERANCES:  
 L ≤ 12 [305] = +1 [25] / -0  
 12 [305] < L ≤ 60 [1524] = +2 [51] / -0  
 60 [1524] < L ≤ 120 [3048] = +4 [102] / -0  
 120 [3048] < L ≤ 300 [7620] = +6 [152] / -0  
 300 [7620] < L = +5%L / -0

ALL DIMENSIONS SHOWN ARE FOR REFERENCE ONLY.

THIRD-ANGLE PROJECTION

THE INFORMATION AND DESIGN IN THIS DOCUMENT IS THE PROPERTY OF SHOWMECABLES, INC. ALL RIGHTS RESERVED.

SHEET 1 OF 1

SCALE N/A

**Show Me**  
**CABLES**  
 an INFINITE brand  
 115 Chesterfield Industrial Blvd.,  
 Chesterfield, MO 63005  
 Phone: 1.888.519.9505 | Fax: 1.888.519.9515  
 Website: www.ShowMeCables.com  
 E-mail: CustomerService@ShowMeCables.com

ITEM NO. CWC-CA327-00441R

SIZE A CAGE CODE 3SVT8 DRAWN BY BPUCHASKI

THESE COMMODITIES, TECHNOLOGY OR SOFTWARE WERE EXPORTED FROM THE UNITED STATES IN ACCORDANCE WITH THE EXPORT ADMINISTRATION REGULATIONS. DIVERSION CONTRARY TO U.S. LAW PROHIBITED.

T-RevD