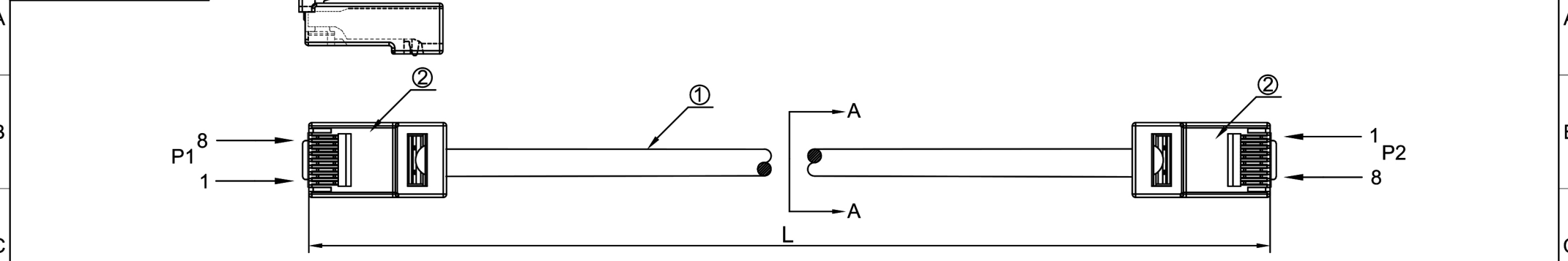
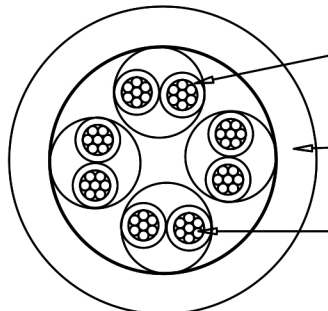


DATE	REV.	REVISION	DRAFTING	CHECKED
2018.04.19	A0	NEW	LM	YB



INK MARKIN:PATCH CABLE www.ecorecables.com 866-519-9505 CAT6 UTP 550MHz ETL VERIFIED TO ANSI/TIA-568-C.2 ▲ 4PR/24AWG CMX(UL) c(UL) CMH E164469-XX RoHS COMPLIANT

COLOR	
Blue	Gray
White	Black
Green	Red
Orange	Yellow
Purple	Pink



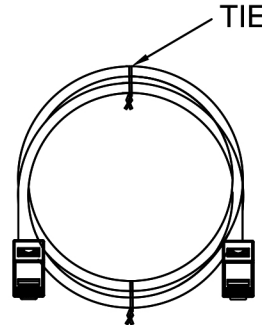
INSULATION:[HDPE NOMINAL OD:0.9MM]X4P
 JACKET:PVC,OD:5.3±0.3MM
 CONDUCTOR:[(24AWG 7C)BC]X4P

orange 1	green 2
white/orange	white/green
blue 3	brown 4
white/blue	white/brown

PINOUT		
P1	WIRE	P2
1	WHITE/ORANGE	1
2	ORANGE	2
3	WHITE/GREEN	3
4	BLUE	4
5	WHITE/BLUE	5
6	GREEN	6
7	WHITE/BROWN	7
8	BROWN	8

L (mm)	T(mm)	L (mm)	T(mm)
150	±30	3050	±30
305	±30	4270	±50
610	±30	7620	±80
910	±30	15240	±200
1524	±30	30480	±300
2130	±30		

Winding	
L(mm)	Tie(pcs)
150-305	Without Winding
610-910	1
1524-30480	2



②	PLUG	8P8C G/F RJ45	2	Unless specified on the drawing, tolerances are per the follows: X. ±0.20 X° ±3 .X ±0.10 .X° ±0.3 .XX ±0.05	CUSTOMER		TITLE	Cat6 Ethernet Patch Cable- No Boot		
①	CABLE	CAT.6 UTP 24AWG*4P PVC	1		CUST' R P/N	B6-XXX	Part No.	650-XX		
No.	TITLE	DESCRIPTION	Q' TY		SCALE		CHECK	YB	DATE	2018.04.19
Material		Part Number	Note	<input checked="" type="checkbox"/> RoHS <input type="checkbox"/> Reach <input type="checkbox"/> GP <input type="checkbox"/> HF <input type="checkbox"/> Other	WL	UNIT	mm	APPROVED	LANDER	SHEET