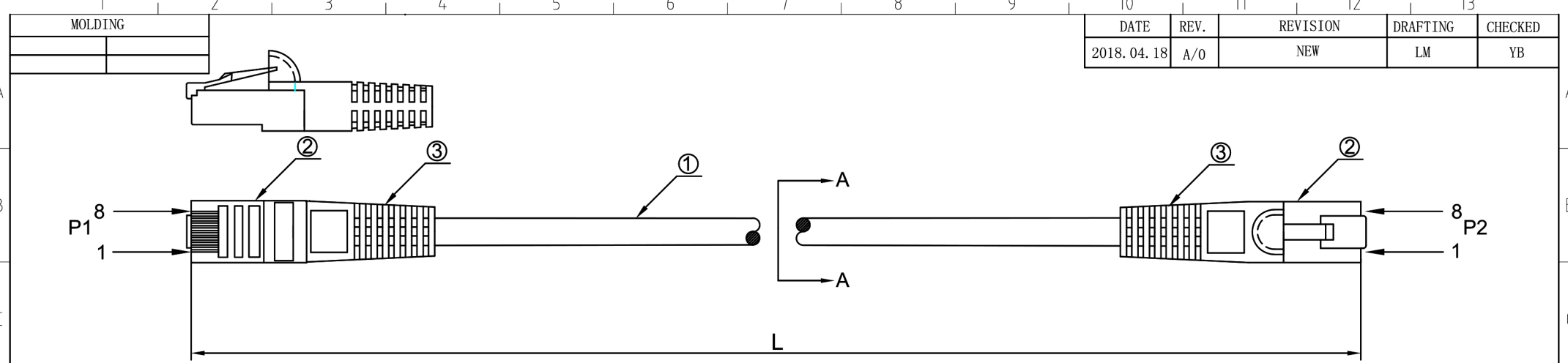


DATE	REV.	REVISION	DRAFTING	CHECKED
2018. 04. 18	A/0	NEW	LM	YB

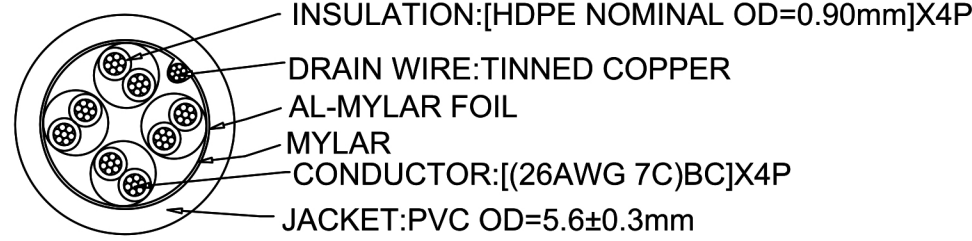


INK MARKING: PATCH CABLE www.ecorecables.com 866-519-9505 CAT5E FTP 350MHz ETL VERIFIED TO ANSI/TIA-568-C.2 ▲ 4PR/26AWG CMX(UL) c(UL) CMH E164469-XX RoHS COMPLIANT

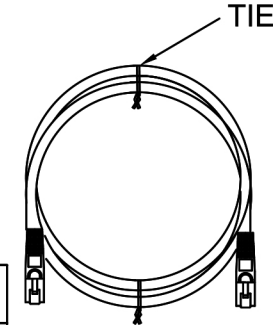
orange 1	green 2
white/orange	white/green
blue 3	brown 4
white/blue	white/brown

COLOR
Blue
Gray
Black
Yellow

L (mm)	T(mm)	L (mm)	T(mm)
305	±30	4570	±50
910	±30	7620	±80
1524	±30	15240	±200
2130	±30	30480	±300
3050	±30	30500	±300
4270	±50		



A-A	Winding
L(mm)	Tie(pcs)
305	Without Winding
910	1
1524-30500	2



PINOUT		
P1	WIRE	P2
1	WHITE/ORANGE	1
2	ORANGE	2
3	WHITE/GREEN	3
4	BLUE	4
5	WHITE/BLUE	5
6	GREEN	6
7	WHITE/BROWN	7
8	BROWN	8
SHELL	DRAIN	SHELL

③	MOLD	YUS-07 PVC	2
②	PLUG	8P8C G/F SHIELDED	2
①	CABLE	C5E FTP 26AWGX4P PVC	1
No.	TITLE	DESCRIPTION	Q' TY
	Material	Part Number	Note
			<input checked="" type="checkbox"/> RoHS <input type="checkbox"/> Reach <input type="checkbox"/> GP <input type="checkbox"/> HF <input type="checkbox"/> Other

Unless specified on the drawing, tolerances are per the follows:
 X. ±0.20 X° ±3
 .X ±0.10 .X° ±0.3
 .XX ±0.05

CORE CABLES			
DRAW. NO		TITLE	Cat5e Shielded Patch Cable
CUSTOMER		Part No.	510-XX
CUST' R P/N		CHECK	DATE
SCALE		APPROVED	SHEET
UNIT	mm		