

6

5

4

3

2

1

## REVISION

ZONE	REV	DESCRIPTION	DATE	CHANGED BY	APPROVED
	A	INITIAL RELEASE	02/08/2024	AKRESOWSKI	GUTTADAURO

F

E

D

C

B

A

F

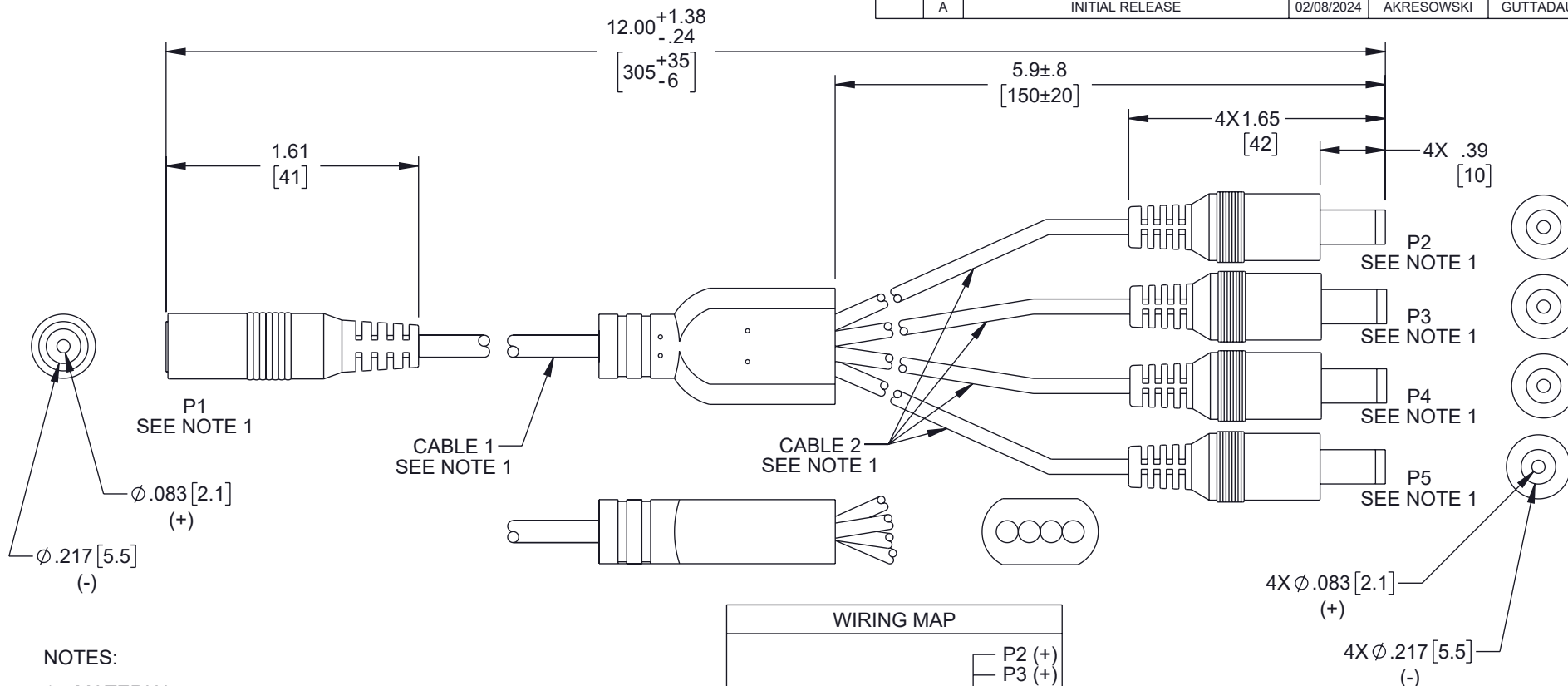
E

D

C

B

A



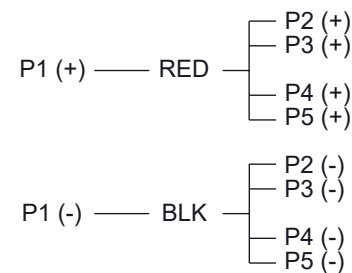
## NOTES:

- MATERIAL:**  
CABLE 1: 20 AWG, 2 CONDUCTORS,  
PVC JACKET OD: .197 ±.006 [5 ±0.15]  
MARKING: AWM 2464 80°C 300V 20AWG\*2C VW-1  
CABLE 2: 24 AWG, 2 CONDUCTORS,  
PVC JACKET OD: .138 ±.006 [3.5 ±0.15]  
MARKING: AWM 2464 80°C 300V 24AWG\*2C VW-1  
P1 PLUG: DC ∅5.5 X 2.1 mm FEMALE, NICKEL PLATED  
SHELL, INSULATOR COLOR: BLACK  
MOLDED PVC BOOT.  
P2, P3, P4, P5 PLUG: DC ∅5.5 X 2.1 mm MALE, NICKEL  
PLATED SHELL, INSULATOR COLOR: BLACK  
MOLDED PVC BOOT.
- ELECTRICAL TEST:**  
100% OPEN SHORT AND MISS WIRE TEST.  
CONDUCTIVE RESISTANCE: 0.2 Ω MAX.  
INSULATION RESISTANCE: 10 MΩ MIN AT 300V DC.

**REGULATORY COMPLIANCE:**  
EU RoHS DIRECTIVE (MOST RECENT RELEASED VERSION).

THE INFORMATION CONTAINED IN THIS DRAWING IS THE SOLE PROPERTY OF INFINITE ELECTRONICS, INC. ANY REPRODUCTION IN PART OR WHOLE WITHOUT THE WRITTEN PERMISSION OF INFINITE ELECTRONICS, INC. IS PROHIBITED. THESE COMMODITIES, TECHNOLOGY OR SOFTWARE WERE EXPORTED FROM THE UNITED STATES IN ACCORDANCE WITH THE EXPORT ADMINISTRATION REGULATIONS. DIVERSION CONTRARY TO U.S. LAW PROHIBITED.

## WIRING MAP



UNLESS OTHERWISE SPECIFIED  
LEADING DIMENSIONS ARE INCHES  
DIMENSIONS IN [ ] ARE MILLIMETERS

TOLERANCES:  
X = ±.2 [5]      FRACTIONS  
XX = ±.02 [0.5]      ± 1/32  
XXX = ±.005 [0.13]      ANGLES ± 1°

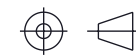
CABLE LENGTH TOLERANCES:  
≤12 [305] = +1 [25] / -0  
>12 [305] ≤ 60 [1524] = +2 [51] / -0  
>60 [1524] ≤ 120 [3048] = +4 [102] / -0  
>120 [3048] ≤ 300 [7620] = +6 [152] / -0  
>300 [7620] = +5% / -0

ALL DIMENSIONS ARE FOR REFERENCE ONLY  
AND SUBJECT TO CHANGE WITHOUT NOTICE.  
UN-DIMENSIONED NON-CRITICAL FEATURES  
MAY VARY IN SIZE AND LOCATION.  
COLORS MAY VARY

**Show Me™**  
**CABLES**

an INFINIT® brand

Website: [www.ShowMeCables.com](http://www.ShowMeCables.com)  
Phone: 1.888.519.9505



INTERPRET ALL DIMENSIONS AND  
TOLERANCES PER ASME Y14.5

SCALE	SHEET
NONE	1 OF 1

## DESCRIPTION

DC CA, 5.5mm/2.1mm F TO 4 M, 1 FT

SIZE	CAGE CODE	DRAWN BY	ITEM NO.	REV
A	3SVT8	AKRESOWSKI	50-166-XXX	A

6

5

4

3

2

1