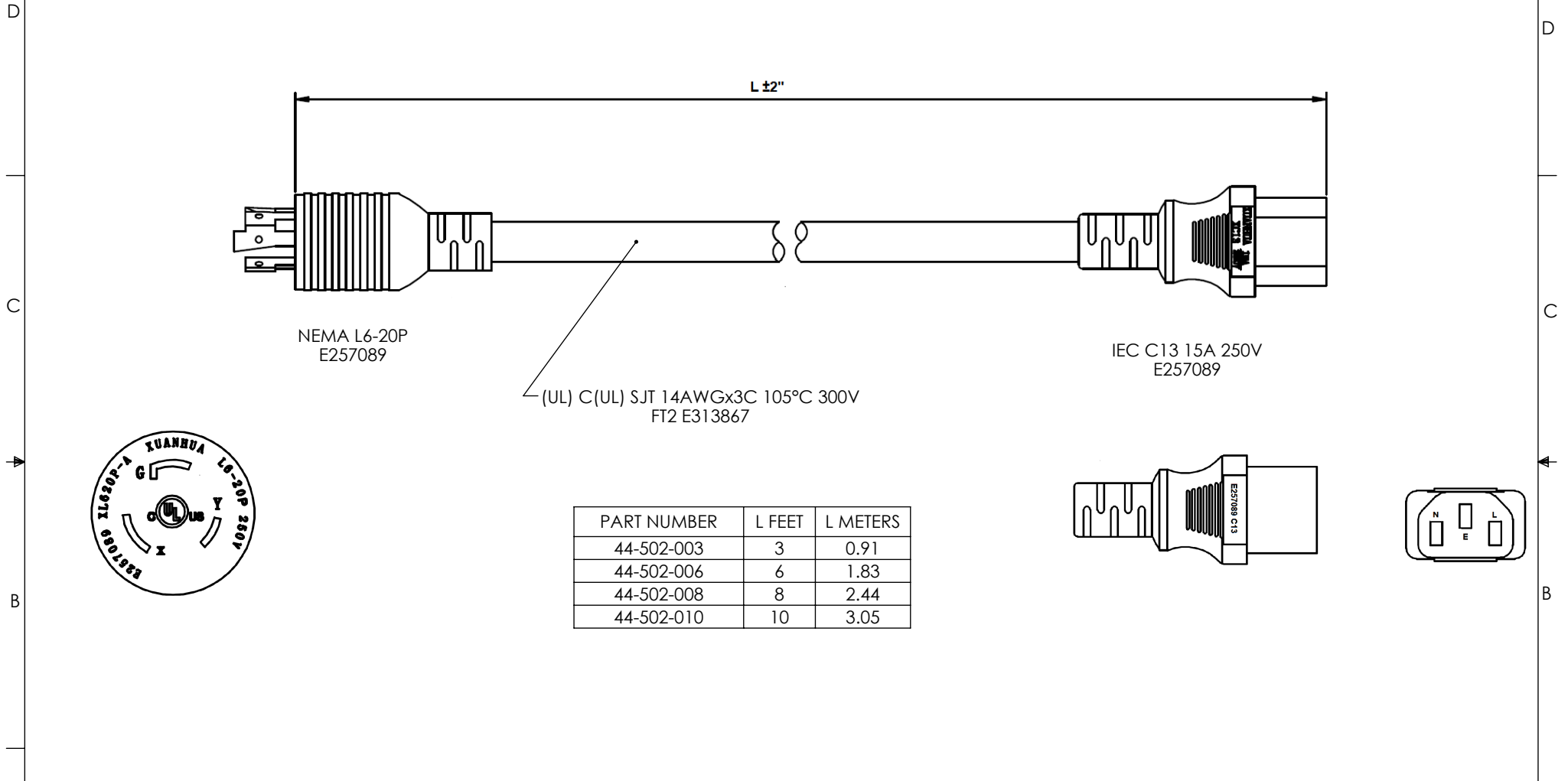


THE INFORMATION CONTAINED IN THIS DRAWING IS THE SOLE PROPERTY OF SHOW ME CABLES, INC. ANY REPRODUCTION IN PART OR WHOLE WITHOUT THE WRITTEN PERMISSION OF SHOW ME CABLES, INC. IS PROHIBITED.

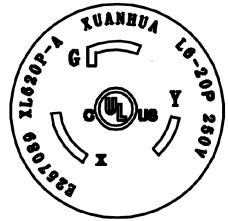
REVISIONS			
REV	DESCRIPTION	DATE	APPROVED
A	INITIAL RELEASE	10/13/2020	MBLACKWOOD



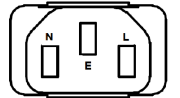
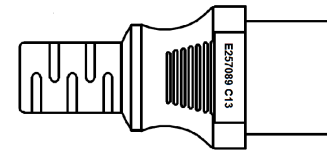
NEMA L6-20P
E257089

IEC C13 15A 250V
E257089

(UL) C(UL) SJT 14AWGx3C 105°C 300V
FT2 E313867


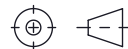


PART NUMBER	L FEET	L METERS
44-502-003	3	0.91
44-502-006	6	1.83
44-502-008	8	2.44
44-502-010	10	3.05



NOTES:

1. APPROVALS: UL, cUL.
2. RATING: 15A/250V.
3. COLOR CODING: BLACK, WHITE, GREEN.
4. CABLE ASSEMBLY SHALL BE INDIVIDUALLY PACKAGED IN ACCORDANCE WITH SPEC. PS-0031.

UNLESS OTHERWISE SPECIFIED, DIMENSIONS ARE IN INCHES [mm] OVERALL CABLE LENGTH TOLERANCE: ≤12 [305] = +1 [25] / -0 >12 [305] ≤60 [1524] = +2 [51] / -0 >60 [1524] ≤120 [3048] = +4 [102] / -0 >120 [3048] ≤300 [7620] = +6 [152] / -0 >300 [7620] = +5% / -0 ALL OTHER DIMENSIONAL TOLERANCES: .X = ± .2 [5] FRACTIONS ± 1/32 .XX = ± .02 [.5] ANGLES ± 1° .XXX = ± .005 [.13]	APPROVALS	DATE	 115 Chesterfield Industrial Blvd., Chesterfield, MO 63005 Phone: 1.888.519.9505 Fax: 1.888.519.9515
	DRAWN BY DZINN CHECKED BY DFRISIELLO APPROVED BY MBLACKWOOD	10/13/2020 10/13/2020 10/13/2020	
THIRD-ANGLE PROJECTION 	CONFIGURATION DETAILS OF UNDIMENSIONED FEATURES MAY VARY COLOR VARIATIONS MAY OCCUR	PRODUCT DESCRIPTION Nema L6-20P to C13 Power Cord, 15A, 250V	SCALE: NONE CAD FILE: 44-502-XXX.SLDDRW SHEET 1 OF 1
SIZE A CAGE CODE 3SVT8 ITEM NO. 44-502-XXX REV. A			