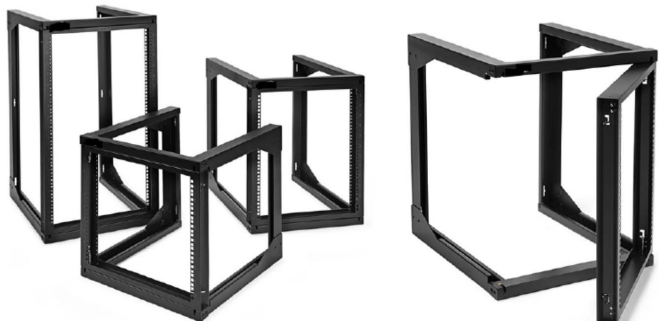


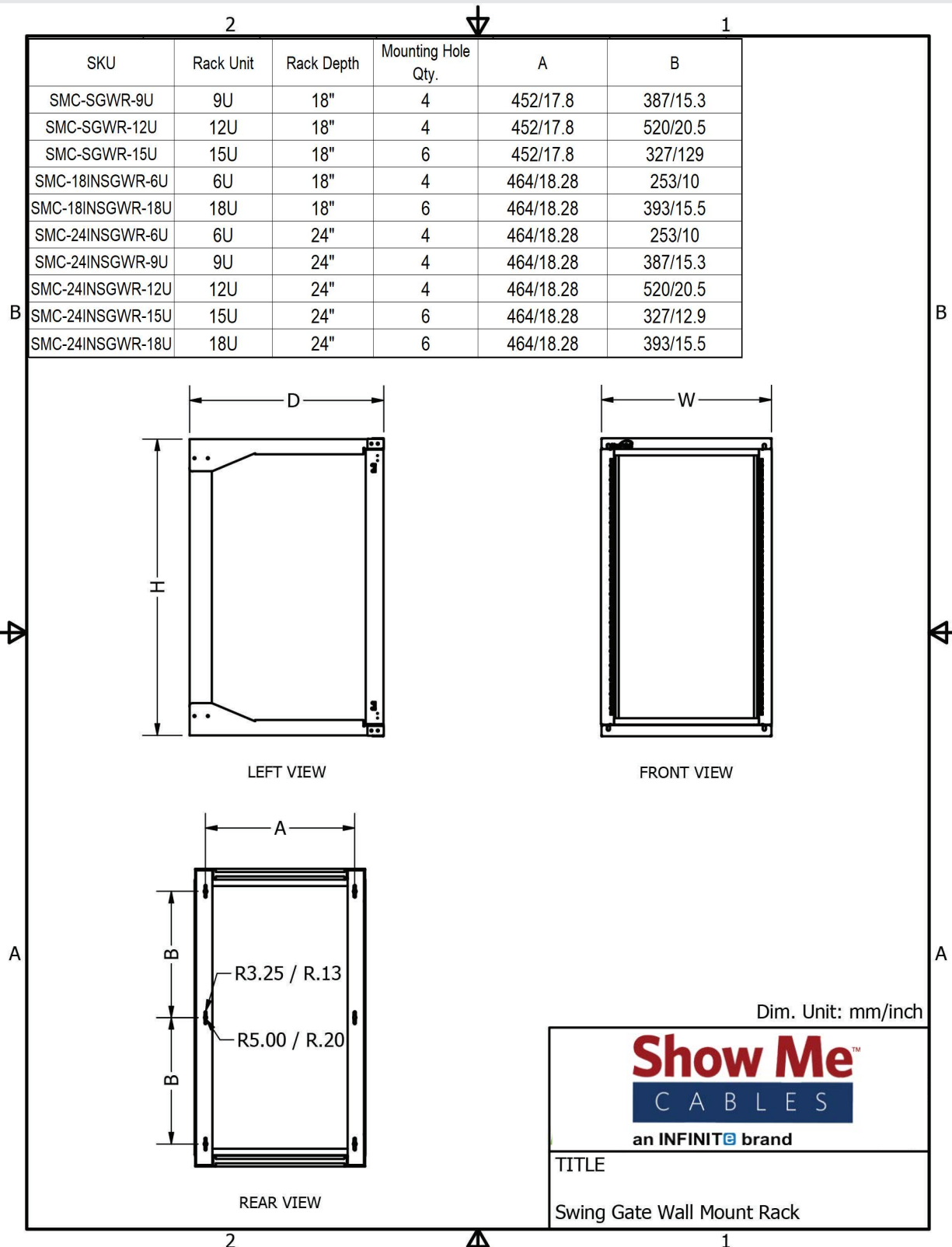
### Swing Gate Wall-Mount Racks



Use space efficiently with the ShowMeCable's Swing Gate Wall-Mounted Rack for your standard 19 inch servers and AV and networking equipment. The dual-hinged front swing gate easily opens 180 degrees for easy rear access to cables from either side. Spring-load pivot pins provide for either left or right hinging, so you can choose what works for your build.

Model / SKU Number	SMC-SGWR-9U	SMC-SGWR-12U	SMC-SGWR-15U	SMC-18INSGWR-6U	SMC-18INSGWR-18U	SMC-24INSGWR-6U	SMC-24INSGWR-9U	SMC-24INSGWR-12U	SMC-24INSGWR-15U	SMC-24INSGWR-18U	
<b>PHYSICAL</b>											
Rack Capacity (in Rack Units)	9U	12U	15U	6U	18U	6U	9U	12U	15U	18U	
Rack Depth (in)	18	18	18	18	18	24	24	24	24	24	
Unit Dimensions (in)	H	20.9	26.2	31.4	15.5	36.5	15.5	20.8	26	31	36.5
	W	20	20	20	20.8	20.8	20.8	20.8	20.8	20.8	20.8
	D	18	18	18	18	18	24	24	24	24	24
Weight Capacity (kg / lbs)	25 / 55	25 / 55	25 / 55	50 / 110	50 / 110	50 / 110	50 / 110	50 / 110	50 / 110	50 / 110	
Material	Cold Rolled Steel										
Painting / Coating	Black Powder Coating										
Construction	Bolted Assembly										
Rack Hole Type	Square and 12-24 Threaded	Square and 12-24 Threaded	Square and 12-24 Threaded	Square and 12-24 Threaded	Square and 12-24 Threaded	Square and 12-24 Threaded	Square and 12-24 Threaded	Square and 12-24 Threaded	Square and 12-24 Threaded	Square and 12-24 Threaded	
<b>ADDITIONAL FEATURES</b>											
Mounting	M6 Metal Washers (x4) M6 Wall Mounting Screws (x4)	M6 Metal Washers (x4) M6 Wall Mounting Screws (x4)	M6 Metal Washers (x4) M6 Wall Mounting Screws (x4)	M6 Metal Washers (x4) M6 Wall Mounting Screws (x4)	M6 Metal Washers (x4) M6 Wall Mounting Screws (x4)	M6 Metal Washers (x4) M6 Wall Mounting Screws (x4)	M6 Metal Washers (x4) M6 Wall Mounting Screws (x4)	M6 Metal Washers (x4) M6 Wall Mounting Screws (x4)	M6 Metal Washers (x4) M6 Wall Mounting Screws (x4)	M6 Metal Washers (x4) M6 Wall Mounting Screws (x4)	
Equipment Mounting Hardware	M6 Cage Screws (x10) M6 Cage Nuts (x10) 12-24 Screws (x10)	M6 Cage Screws (x10) M6 Cage Nuts (x10) 12-24 Screws (x10)	M6 Cage Screws (x10) M6 Cage Nuts (x10) 12-24 Screws (x10)	M6 Cage Screws (x10) M6 Cage Nuts (x10) 12-24 Screws (x10)	M6 Cage Screws (x10) M6 Cage Nuts (x10) 12-24 Screws (x10)	M6 Cage Screws (x10) M6 Cage Nuts (x10) 12-24 Screws (x10)	M6 Cage Screws (x10) M6 Cage Nuts (x10) 12-24 Screws (x10)	M6 Cage Screws (x10) M6 Cage Nuts (x10) 12-24 Screws (x10)	M6 Cage Screws (x10) M6 Cage Nuts (x10) 12-24 Screws (x10)	M6 Cage Screws (x10) M6 Cage Nuts (x10) 12-24 Screws (x10)	
Swing Gate Access	✓										
Assembly	Assembly Required										
<b>COMPLIANCE AND CERTIFICATIONS</b>											
EIA/ECA-310-E	✓										
ROHS	✓										
CE	✓	✓	✓								
DIN 41494	✓										
IEC-60297-3-100	✓										
<b>SHIPPING</b>											
Shipping Dimensions (in)	L	21	26	31	21.625	38.5	25.375	25.375	28.875	34	39.25
	W	21	21	21	17.85	21.625	18.25	23.625	25.75	25.875	25.75
	H	7	7	7	5.25	5.25	5.25	5.25	5.25	5.25	5.25
Shipping Weight (lbs)	18.55	20.5	22.6	24.3	35.2	29.35	32.35	35.55	37.9	40.75	

## Swing Gate Wall-Mount Racks



Swing Gate Wall-Mount Racks

